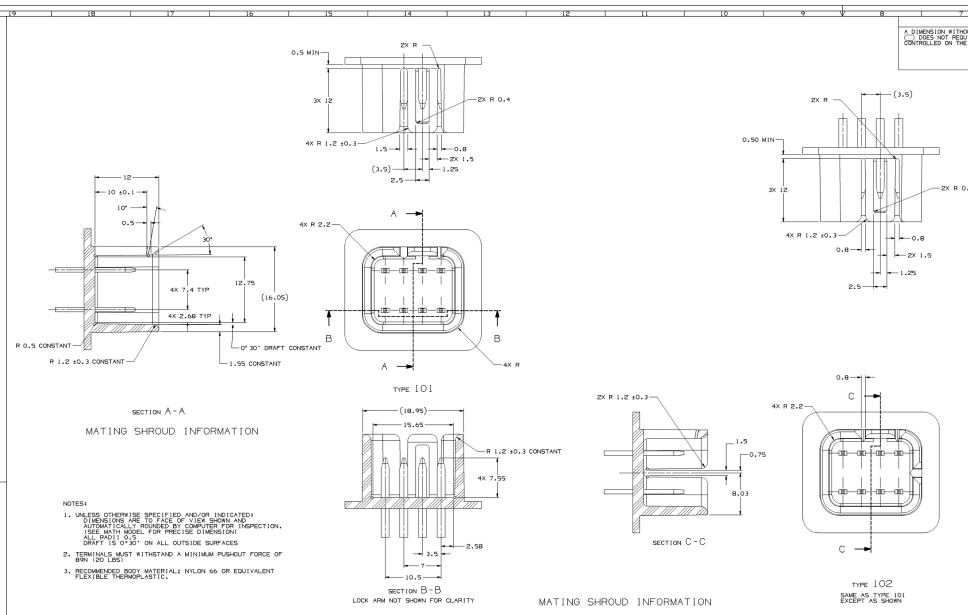
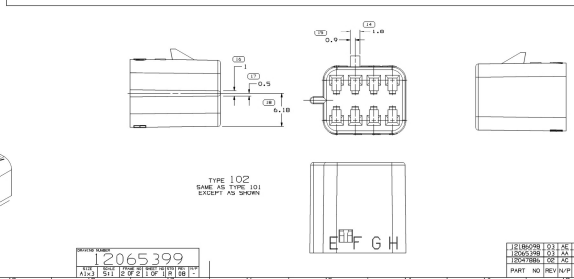


NOTE: TERMINALS ARE IDENTICAL  
**MATERIAL SPECIFICATIONS**  
 RECOMMENDED  
 TEMPERATURE - 000-110, SILICON SPRING TEMPER  
 PLATING \* 0.0025-0.0075 MM THICK TIN  
 MATERIALS  
 ELECTRICAL CONDUCTIVITY \* 2.30E+06 A 200°C, USE OF A  
 BY PACKING ELECTRIC MATERIALS ENGINEERING  
 TENSILE STRENGTH \* 407 MPa  
 ELASTIC LIMIT FOR LOW ENERGY (6 1/2% & NON-PASSENGER  
 EQUIPMENT POWER CIRCUITS) 0.00001/0.015 MM  
 TENSILE ELONGATION (MINIMUM) 3%  
 TYPICAL TENSILE STRESS 1300-1600 MPa  
 TENSILE ELONGATION (MINIMUM) 3%  
 TENSILE ELONGATION (MINIMUM) 3%  
**BLADE THICKNESS**  
 USE FINISH: 2X 0.1 ± 0.025  
 TIN PLATED \* 0.0025 ± 0.0050  
**MATING BLADE INFORMATION**  
 SCALE 10:1



**NOTES**  
 1. UNLESS OTHERWISE SPECIFIED AND/OR INDICATED, DIMENSIONS ARE TO FACE OF LOCK SHROUD AND TERMINALS AS INDICATED BY DIMENSIONS FOR INSPECTION. USE BOTH SIDES FOR PRECISE DIMENSION.  
 DRAFT IS 0.5° ON ALL OUTSIDE SURFACES.  
 2. TERMINALS MUST WITHSTAND A MINIMUM PUSHOUT FORCE OF 89N (20 LBS).  
 3. RECOMMENDED BODY MATERIAL: NYLON 66 OR EQUIVALENT FLEXIBLE THERMOSET.



2065399  
 A10 1 2 3 4 5 6 7 8 9 10

DELPHI 101 102	DELPHI COMBINED 9801	100	1.500
DELPHI 101 102	DELPHI COMBINED 9801	101	1.000
DELPHI 101 102	DELPHI COMBINED 9801	102	1.500
DELPHI 101 102	DELPHI COMBINED 9801	103	1.500

A DIMENSION WITHOUT AN INSPECTION REPORT SYMBOL, MAY ONLY NOT BE USED UNLESS THE DIMENSION IS SPECIFICALLY CONTROLLED BY THE INDIVIDUAL COMPONENT DRAWING.

SYMBOL DEFINITION	TOTAL NO. OF DIMENSIONS	MISSING SYMBOLS
	18	2-4 & B 10
UNLESS OTHERWISE SPECIFIED		
ALL PARTS MUST BE SPECIALLY ANNEALED OR QUALITY TREATED FOR A RESISTIVE MATERIAL		
ALL PARTS - APPLIED FOR ATTRIBUTES		
ALL PARTS - APPLIED FOR ATTRIBUTES		
ALL PARTS - APPLIED FOR ATTRIBUTES		
ALL PARTS - APPLIED FOR ATTRIBUTES		
ALL PARTS - APPLIED FOR ATTRIBUTES		

**NOTES**  
 1. UNLESS OTHERWISE SPECIFIED AND/OR INDICATED, DIMENSIONS ARE TO FACE OF LOCK SHROUD AND TERMINALS AS INDICATED BY DIMENSIONS FOR INSPECTION. USE BOTH SIDES FOR PRECISE DIMENSION.  
 2. THIS PART WILL PASS THRU A 18.5 DIA MIN. HOLE.  
 3. (2X 10.1) BAIRED RELIANT COMPOSITE BRAND, TO BE LOCATED ON ANY EXTERIOR SURFACE, PROVIDING IT IS VISIBLE AT FINAL ASSEMBLY. OPTIONAL CONSTRUCTION TO BE "PREP" OR "NO LOG".  
 4. MATERIAL RECYCLING CODE PER ISO 14001, (2X) 10.1 CHARACTERS AS SHOWN TO BE LOCATED ON ANY EXTERIOR SURFACE.  
 5. THIS DIMENSION IS NOT CONSIDERED AS AN ALLOWANCE ITEM. MINOR INSPECTION TOLERANCES, BUT NOT LIMITED TO, CLEANING, COARSE SURFACES, OR VIBRATION AND SOFT CONTACT MAY SO NOT AFFECT THE FIT, FORM, OR FUNCTION OF THE PART ARE PERMISSIBLE PER NIP 4.10-10.  
 6. FOR APPLICATION DATA SEE THE INDIVIDUAL APPLICATION DRAWINGS.

**DELPHI**  
 DELPHI POWER ELECTRONIC ELECTRICAL INDUSTRIES

DATE	2006-03-21	SIZE	1:1
DRAWN BY	W. J. WILSON	DESIGNER	W. J. WILSON
CHECKED BY	R. L. WILSON	ENGINEER	R. L. WILSON
APPROVED BY	T. J. WILSON	MANAGER	T. J. WILSON
DATE	2006-03-21	SCALE	1:1
REV	1	DESCRIPTION	REVISION
TAXI CODE	100	WORK CENTER	
1065399			

2065399  
 A10 1 2 3 4 5 6 7 8 9 10

15092300