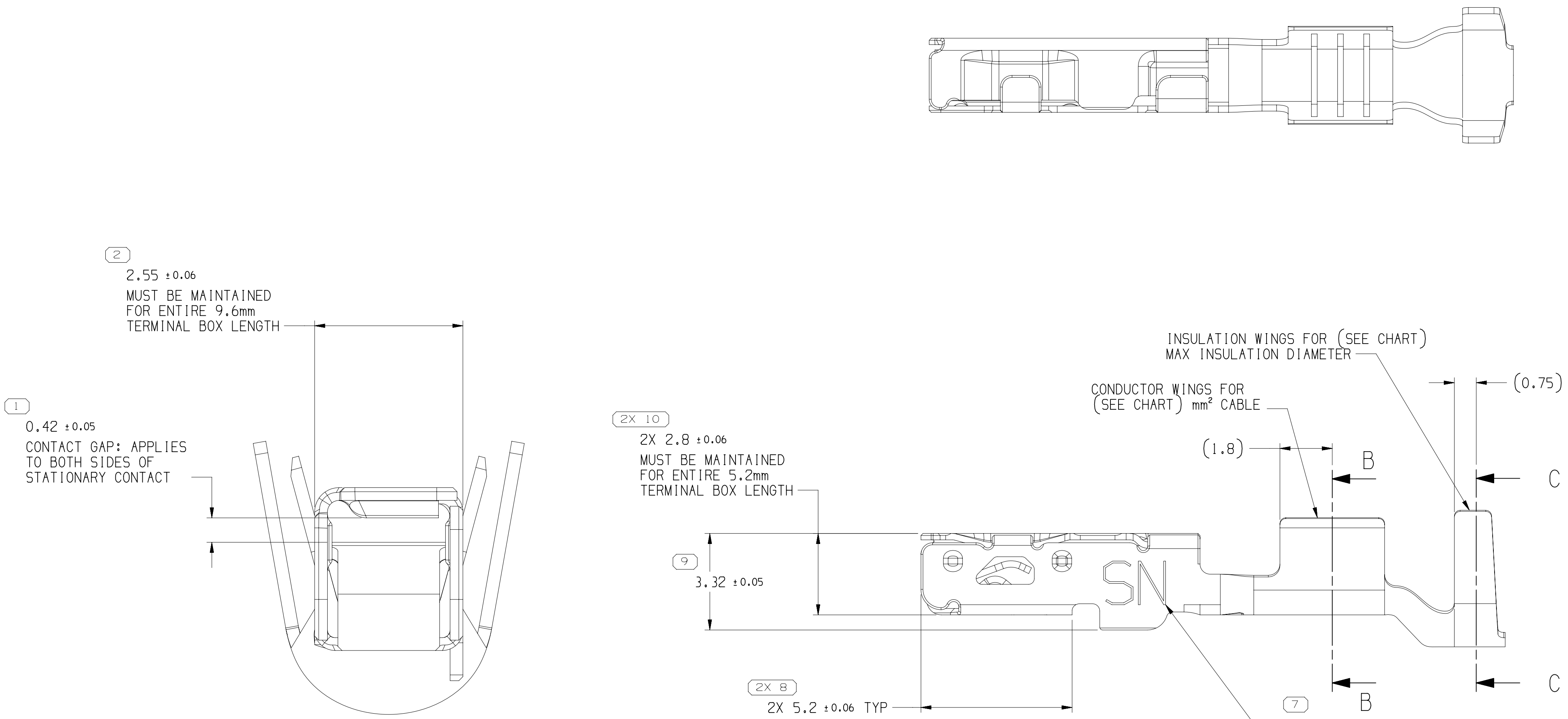
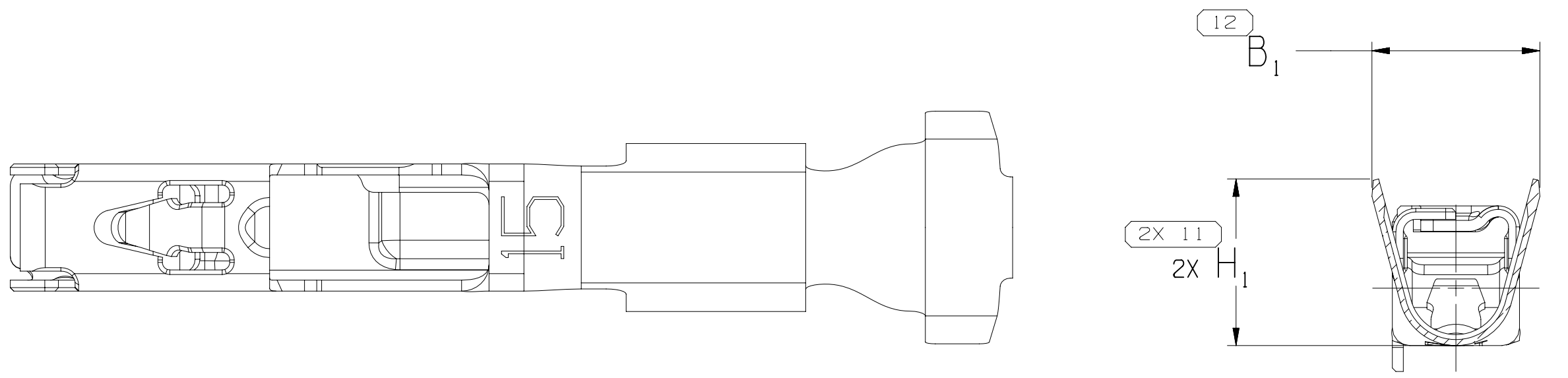


SYMBOL DEFINITION			MISSING SYMBOLS	
	A DIMENSION WITHOUT AN INSPECTION REPORT SYMBOL DOES NOT REQUIRE INSPECTION. IT MAY BE CONTROLLED ON THE INDIVIDUAL COMPONENT DRAWING.		TOTAL NO OF INSPECTIONS REQUIRED	22
			LAST NO. USED	17

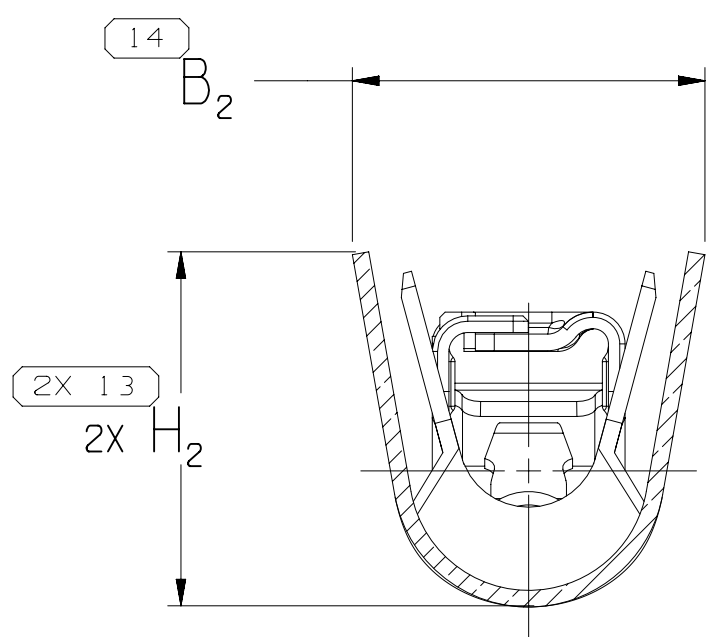
DWG STATUS	DATE	STG	REV	N/P	CHG	ZONE	REVISION HISTORY	AUTH	DR	APV0	APV2
02AU12	R	01	-	-	-		ALL PARTS - CREATED PART DRAWING	419108	CM	CM	RS
110C12	R	02	-	-	-		ALL PARTS - UPDATED PDM ATTRIBUTES	419949	RHS	RHS	RJB
11FE13	R	03	-	-	-		ALL PARTS - UPDATED PDM ATTRIBUTES	421406	RHS	RHS	RJB
13MY13	R	04	-	-	-		ALL PARTS - REVISED DIMENSION ON TOD	422460	MM	MM	RJB
23MY13	R	05	-	-	-		ALL PARTS - REVISED COIN/DEBURR SPECIFICATIONS; UPDATED PROCESS SENSITIVE DIMENSION	422625	MM	MM	RJB
110C13	R	06	-	-	-		ALL PARTS - ADDED MAXIMUM INSULATION CRIMP NOTE	424095	JVR	EVV	RJB
15N013	R	07	-	-	-		ALL PARTS - ADDED TYPICAL CABLE SEAL COLUMN CHART & BOTTOM VIEW	424633	APB	EVV	RJB
12JN14	R	08	-	-	-		ALL PARTS - ADDED TYPICAL CABLE SEAL NOTE AND REVISED PERFORMANCE REQUIREMENT RATING NOTE & TYPICAL CABLE SEAL COLUMN IN CHART	426690	APB	EVV	RJB
27AU14	R	09	-	-	-		ALL PARTS - REVISED PERFORMANCE REQUIREMENT RATING NOTE	427485	APB	EVV	RJB
25JN15	R	10	-	-	-		ALL PARTS - REVISED CRIMP NOTE; 13919132 - CABLE DIAMETER WAS 2 - 2.4; 13919134 - CABLE DIAMETER WAS 1.4 - 1.83; 13919135 - CABLE DIAMETER WAS 1.4 - 1.83	430035	APB	APB	RDL
220C15	R	11	-	-	-		ALL PARTS - UPDATED PDM ATTRIBUTES	431214	APB	APB	RDL
12JL16	R	12	-	-	-		ALL PARTS - UPDATED PDM ATTRIBUTES	433610	APB	APB	RDL
06JA17	R	13	-	-	-		ALL PARTS - UPDATED PART AVAILABILITY	435314	APB	APB	RBS
17MY18	R	14	-	-	-		ADDED "SHT 1 OF 2"	439747	LVD	JKA	RBS
02AG18	R	15	-	-	-		"SHT 1 OF 3" WAS "SHT 1 OF 2"	440395	AGC	AGC	RBS
04MR19	R	16	-	-	-		"SHT 1 OF 4" WAS "SHT 1 OF 3"	442442	LVD	RBS	RBS
17JN19	R	17	-	-	-		ALL PARTS - OBSOLETE AND ADDED REPLACED BY COLUMN & NOTE	443548	LVD	RBS	RBS



SCALE 20:1



SECTION B-B



SECTION C-C

NOTES

1. UNLESS OTHERWISE SPECIFIED AND/OR INDICATED:

DIMENSIONS ARE TO FACE OF VIEW SHOWN AND AUTOMATICALLY ROUNDED BY COMPUTER FOR INSPECTION (SEE MATH MODEL FOR PRECISE DIMENSIONS). FOR ALL OTHER DIMENSIONS NOT SHOWN BUT REQUIRED FOR TOOL BUILD, SEE MATH MODEL FOR PRECISE TOOL PATH DATA.

2. RECOMMENDED MATING BLADE THICKNESS 0.8 +0.04/-0.03mm
RECOMMENDED MATING BLADE WIDTH NOT TO EXCEED 1.6mm AND NO LESS THAN 1.1mm. SEE USCAR EWCAP-001 (1.5 BLADE) FOR MATING BLADE REQUIREMENTS.

3. PLUS ANGLE IS WING BOTTOM SURFACE ROTATED COUNTERCLOCKWISE AGAINST THE BOX BOTTOM SURFACE.

4. MAXIMUM CURRENT CAPABILITY AS DEFINED BY USCAR-2 R5 SECTION 5.3.3 IS 21 AMPS WITH 1.5mm² COPPER CABLE.

5. * DENOTES DIMENSIONS MADE AT CUT-OFF AND CRIMP DIE

6. PLATING TYPE:

1. REFLOW TIN 1.9 - 3.3 MICROMETERS THICK OVER NICKEL UNDERPLATE 0.13 - 0.5 MICROMETERS THICK.

PLATING TYPE INFORMATION SHOWN ABOVE IS REFERENCE ONLY. PLATING REQUIREMENTS ARE CONTAINED IN APPLICABLE MATERIAL SPECIFICATION.

7. PARTS MEET THE PERFORMANCE REQUIREMENTS OF GMM3191 DEC 2007 AND SAE/USCAR-2 R5 REVISIONS FOR THE FOLLOWING CLASSIFICATIONS:

TEMPERATURE CLASS 3 (-40° C TO +125° C)
VIBRATION CLASS 1 (ON BODY OR CHASSIS)
SEALING CLASS 2 OR 3 (SEALED-CONNECTOR & CABLE SEAL DEPENDENT)

8. DO NOT PROBE, TEST OR OTHERWISE CONTACT THE INTERIOR REGION (THE SPRING OR ANY MOVING PART) OF THIS TERMINAL. SEVERE DAMAGE CAN OCCUR, COMPROMISING THE PERFORMANCE OF THE ELECTRICAL INTERFACE.

9. MAXIMUM INSULATION CRIMP WIDTH OF 4.60mm AND HEIGHT 4.15mm FOR CABLE SIZE UP TO 2.4mm O.D., FOR CAVITY DIAMETER 4.8mm; MAXIMUM CORE CRIMP WIDTH OF 2.70mm.

10. TYPICAL CABLE SEAL PART NUMBER IS A REFERENCE FOR A APTIV CABLE SEAL THAT ACCEPTS CABLE SIZES SIMILAR TO THE CORRESPONDING TERMINAL AND MATES TO THE SAME CONNECTOR CAVITY. CABLE DIAMETER RANGE OF DESIRED APPLICATION NEEDS TO BE WITHIN ALLOWABLE RANGE SHOWN ON CABLE SEAL DRAWING.

11. P/N's OBSOLETE BECAUSE C19002 BASE METAL BECAME UNAVAILABLE INDEFINITELY. NEW P/N's WITH C19010 BASE METAL HAVE BEEN VALIDATED FOR REPLACEMENT DEMONSTRATING MATERIAL EQUIVALENCY. PLEASE CONTACT YOUR APTIV REGIONAL APPLICATION ENGINEERING TEAM FOR FURTHER DETAILS.

A LINE DRAWN THROUGH A PART NUMBER INDICATES THAT PHYSICAL PARTS ARE NOT AVAILABLE FOR ORDERING.	
PART NUMBERS THAT DO NOT HAVE A LINE PRESENT INDICATE THAT PHYSICAL PARTS ARE AVAILABLE FOR ORDERING.	
CONTACT APTIV SALES TO ASSURE AVAILABILITY OF PARTS.	
DWG TYPE	PART DRAWING
STYLE	
VOLUME (CM)	DISTR CODE
UNLESS OTHERWISE SPECIFIED THIS DOCUMENT IS IN ACCORDANCE WITH ASME Y14.5M-1994 AS MODIFIED BY THE GSI GLOBAL DIMENSIONS AND TOLERANCING ADDENDUM-2001. SEPARATE PATTERNING OF FEATURES MAY BE ISSUED SEPARATELY REGARDLESS OF DATUM REFERENCES.	
ALL DIMENSIONS ARE IN MILLIMETERS	
REFERENCE	
THIRD ANGLE PROJECTION	DO NOT SCALE
USE MATH DATA	

• APTIV •	
CONNECTION SYSTEMS	
WARREN, OH	
COPYRIGHT 2012 APTIV. ALL RIGHTS RESERVED.	
THIS DRAWING IS THE PROPERTY OF APTIV AND CONTAINS APTIV CONFIDENTIAL INFORMATION. THE REPRODUCTION, DISTRIBUTION AND UTILIZATION OF THIS DOCUMENT OR ITS RELATED CAD DATA, AS WELL AS COMMUNICATION OF ANY CONTENT TO OTHERS, WITHOUT EXPRESS AUTHORIZATION, IS PROHIBITED.	
DR	DATE
APV01 C.MARGRAVE	02AU12
APV02 C.MARGRAVE	02AU12
APV03 ROBERT SNADER	02AU12
APV04	
APV05	
SUBSTANCES OF CONCERN AND RECYCLED CONTENT PER APTIV 10949001	
MATERIAL: SEC CHART	
DRAWING NAME: TAXI TERM F OCS 1.5 SEALED	
DRAWING NUMBER: 13887280	
SIZE	SCALE
A0	10:1
SHEET NO	1 OF 1
REV	17
N/P	

2 PROCESS SENSITIVE DIMENSION	
DIMENSIONS ENCLOSED IN () INDICATE REFERENCE DIMENSIONING AND NO TOLERANCE LIMITS ARE ESTABLISHED	
FROM	CHART
TO	12
TOLERANCE UNLESS OTHERWISE SPECIFIED	±0.1
ANGULAR TOLERANCE	±2°

13919135	05	A6	COPPER ALLOY	I	I	SN	0.22	21	0.35 - 0.5	1.2 - 1.83	2.1	4.2	2.1	4.1	13B34630	35138801
13919134	05	A6	COPPER ALLOY	I	I	SN	0.22	21	0.35 - 0.5	1.2 - 1.83	2.1	4.4	2.1	4.4	13B34623	35138800
13919133	05	A6	COPPER ALLOY	I	I	SN	0.22	17	0.75 - 1.0	1.7 - 2.34	2.6	4.5	2.7	4.5	13B34623	35138799
13919132	05	A6	COPPER ALLOY	I	I	SN	0.22	15	1.25 - 1.5	1.8 - 2.4	3.4	4.65	3.4	4.7	13B34614	35138798
PART NUMBER	REV	N/P	MATERIAL DESCRIPTION	CONTACT AREA PLATING TYPE (SEE NOTE #6)	CRIMP AREA PLATING TYPE (SEE NOTE #6)	CONTACT PLATING I.D.	MATERIAL THICKNESS	CABLE I.D.	CABLE SIZE (mm²)	CABLE DIAMETER	B ₁ ±0.15	B ₂ ±0.25	(H ₁)	(H ₂)	TYPICAL CABLE SEAL	REPLACED BY (SEE NOTE #11)