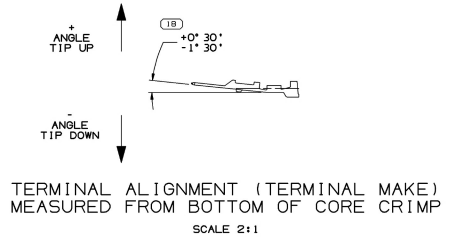
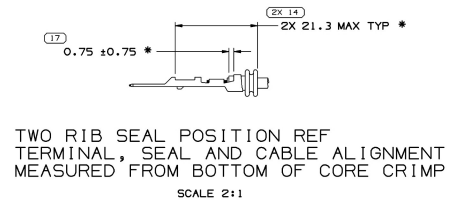
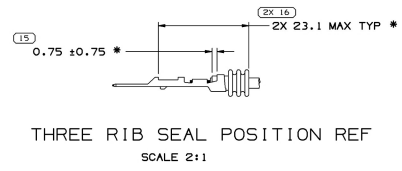
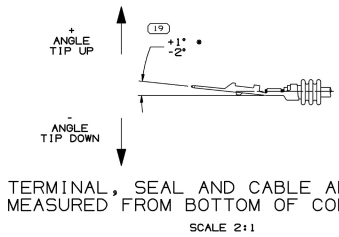
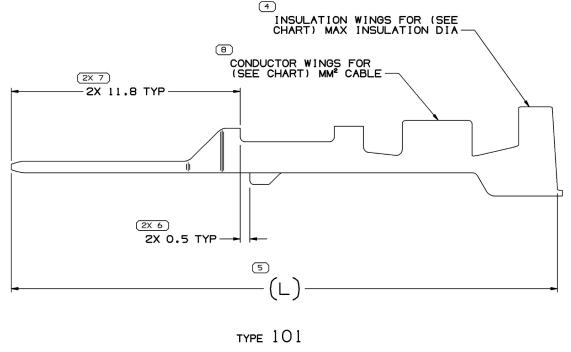
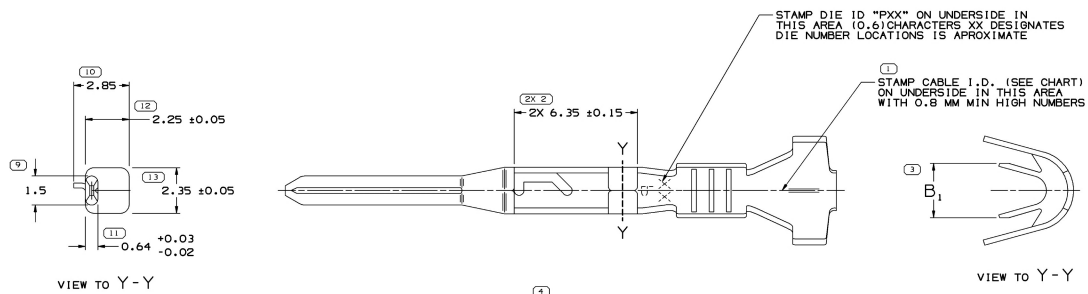


| SYMBOL DEFINITION  |                                  | MISSING SYMBOLS          |  |
|--|----------------------------------|--------------------------|--|
| A DIMENSION WITHOUT AN INSPECTION REPORT SYMBOL ( ) DOES NOT REQUIRE INSPECTION. IT MAY BE CONTROLLED ON THE INDIVIDUAL COMPONENT DRAWING. | TOTAL NO OF INSPECTIONS REQUIRED | NO MISSING SYMBOL NUMBER |  |
|  | 24                               |                          |  |
|  | LAST NO. USED                    |                          |  |
|  | 19                               |                          |  |

| DATE      | STO | REV | MP | CHK | ZONE | REVISION HISTORY  | AUT  |
|-----------|-----|-----|----|-----|------|---|------|
| 30.JUL.82 | R   | 07  | -  | -   | -    | CLEARED REVISION COLUMN; ALL ACTIVE PARTS - UPDATED PDM ATTRIBUTES  | 226  |
| 17.JUL.03 | R   | 08  | -  | -   | -    | 15369260, 15304708, 15304795, AND 15304704 - ADDED TERMINAL MAKE STRAIGHTNESS AND TERMINAL CRIMP STRAIGHTNESS VIEW. DRAWING SIZE WAS A1 - REVISED LOCAL NOTES | 2425 |
| 07OCT03   | R   | 09  | -  | -   | -    | 15304795 - UPDATED PDM ATTRIBUTES   | 2445 |
| 07DEC04   | R   | 10  | -  | -   | -    | ALL ACTIVE PARTS - REMOVED 0.7500.75 & 2X 21.3 MAX TYP DIMS; DIM #7 WAS #24 & DIM #24 WAS #28   | 2510 |
| 04OCT04   | R   | 11  | -  | -   | -    | 15304704-05, 15304708 & 15369260 - ADDED STAMP DIE I.D.   | 2592 |
| 01DEC08   | R   | 12  | -  | -   | -    | ALL ACTIVE PARTS - UPDATED MATERIAL CALLOUT   | 4068 |
| 18MR10    | R   | 13  | -  | -   | -    | ALL ACTIVE PARTS - UPDATED PDM ATTRIBUTES   | 4100 |
| 06AUG10   | R   | 14  | -  | -   | -    | ALL ACTIVE PARTS - ADDED PLATING NOTE, UPDATED MAT'L CALLOUT AND ADDED CONTACT AREA & CRIMP AREA CALLOUTS ON CHART  | 4111 |
| 06OCT10   | R   | 15  | -  | -   | -    | ALL ACTIVE PARTS - UPDATED PLATED NOTES   | 4121 |
| 10AUG11   | R   | 16  | -  | -   | -    | ALL ACTIVE PARTS - ADDED PREFERRED MAT'L SIZE COLUMN AND UPDATED PDM ATTRIBUTES   | 4151 |
| 03OCT12   | R   | 17  | -  | -   | -    | 13969180 - RELEASED   | 4191 |
| 29.JAN15  | R   | 18  | -  | -   | -    | ALL AVAILABLE PARTS - ADDED APPLICATION, TYPICAL CABLE SEAL AND TYPICAL SEALING CAVITY CONFIG. COLUMNS  | 4291 |



- NOTES
- UNLESS OTHERWISE SPECIFIED AND/OR INDICATED: DIMENSIONS ARE TO FACE OF VIEW SHOWN AND AUTOMATICALLY ROUNDED BY COMPUTER FOR INSPECTION (SEE MATH MODEL FOR PRECISE DIMENSIONS). FOR ALL OTHER DIMENSIONS NOT SHOWN BUT REQUIRED FOR TOOL BUILD, SEE MATH MODEL FOR PRECISE TOOL PATH DATA.
  - MATING COMPONENTS OR EQUIVALENT: TERMINAL 12191816.
  - DENOTES DIMENSIONS MADE AT CUT-OFF AND CRIMP DIE.
  - PLATING TYPE:
    - REFLOW TIN 1.9 - 3.3 MICROMETERS THICK WITH A COPPER UNDERPLATE 0.5 MICROMETER TO 1.0 MICROMETER THICK.
 PLATING TYPE INFORMATION SHOWN ABOVE IS REFERENCE ONLY. PLATING REQUIREMENTS ARE CONTAINED IN APPLICABLE MATERIAL SPECIFICATION.

| REV | NO | DATE        | BY          | CHKD | DESCRIPTION  | SIZE       | DIA | TYPE       | B <sub>max</sub> | (L)  | APPLICATION | TYPICAL CABLE SEAL | TYPICAL SEALING CAVITY CONFIG. | REPLACED BY | RESTRICTED USAGE | CONTACT AREA PLATING TYPE (SEE NOTE 4) | CRIMP AREA PLATING NOTE (SEE NOTE 4) |   |
|-----|----|-------------|-------------|------|--------------|------------|-----|------------|------------------|------|-------------|--------------------|--------------------------------|-------------|------------------|--|--------------------------------------|---|
| 01  | AL | 0.3 X 35.75 | 0.3 X 36.12 |      | COPPER ALLOY | 1.5 - 2.5  | 14  | 3.0 - 2.2  | 101              | 3.75 | 28.15       | SEALED (150MP)     | SEE 12010295 TAX1              | Ø 5.2 ROUND | -                | -                                      | -                                    | - |
| 01  | AL | 0.3 X 35.75 | 0.3 X 36.12 |      | COPPER ALLOY | 1 - 1.5    | 15  | 2.4 - 1.9  | 101              | 2.95 | 28.15       | SEALED (GT)        | 12191227 OR EQUIV.             | Ø 4 OVAL    | -                | RESTRICTED                             | -                                    | - |
| 01  | AL | 0.3 X 35.75 | 0.3 X 36.12 |      | COPPER ALLOY | 1.5 - 2.5  | 15  | 2.4 - 1.9  | 101              | 2.95 | 28.15       | SEALED (150MP)     | SEE 12010295 TAX1              | Ø 5.2 ROUND | -                | RESTRICTED                             | -                                    | - |
| 01  | AL | 0.3 X 36.12 | 0.3 X 36.12 |      | COPPER ALLOY | 0.75 - 1   | 17  | 2.25 - 1.7 | 101              | 2.65 | 28.15       | SEALED (GT)        | 12191227 OR EQUIV.             | Ø 4 ROUND   | 15326269         | -                                      | -                                    | - |
| 01  | AL | 0.3 X 36.12 | 0.3 X 36.12 |      | COPPER ALLOY | 0.35 - 0.5 | 21  | 1.85 - 1.2 | 101              | 2.1  | 28.15       | SEALED (GT)        | 12191226 OR EQUIV.             | Ø 4 ROUND   | 15326268         | -                                      | -                                    | - |
| 01  | AL | 0.3 X 35.75 | 0.3 X 36.12 |      | COPPER ALLOY | 0.75 - 1   | 17  | 2.25 - 1.7 | 101              | 2.65 | 28.15       | SEALED (150MP)     | SEE 12010295 TAX1              | Ø 5.2 ROUND | -                | -                                      | -                                    | - |
| 01  | AL | 0.3 X 35.75 | 0.3 X 36.12 |      | COPPER ALLOY | 0.35 - 0.5 | 21  | 1.85 - 1.2 | 101              | 2.1  | 28.15       | SEALED (150MP)     | SEE 12010295 TAX1              | Ø 5.2 ROUND | -                | -                                      | -                                    | - |

**DELPHI**  
DELPHI PACKAGED ELECTRICAL/ELECTRONIC ASSEMBLY

UNLESS OTHERWISE SPECIFIED:  
ALL DIMENSIONS ARE IN MILLIMETERS

THIS DOCUMENT IS THE PROPERTY OF DELPHI. IT IS TO BE USED ONLY FOR THE PURPOSES AND IN THE MANNER SPECIFIED BY THE ORIGINAL DRAWING. IT IS NOT TO BE REPRODUCED, COPIED, OR TRANSMITTED IN ANY FORM OR BY ANY MEANS, WITHOUT THE WRITTEN PERMISSION OF DELPHI. ANY UNAUTHORIZED REPRODUCTION OR USE OF THIS DOCUMENT IS PROHIBITED AND WILL BE CONSIDERED A VIOLATION OF DELPHI'S PATENT RIGHTS AND TRADE SECRET INFORMATION.

DATE: 15304704

SCALE: 10:1

SHEET: 1 OF 1

DR: N. VERGARA  
APPROV: S. STEELE  
APPROV: S. S. HOLEIGH

UNLESS OTHERWISE SPECIFIED:  
REFLOW TIN 1.9 - 3.3 MICROMETERS THICK WITH A COPPER UNDERPLATE 0.5 MICROMETER TO 1.0 MICROMETER THICK.

PLATING TYPE INFORMATION SHOWN ABOVE IS REFERENCE ONLY. PLATING REQUIREMENTS ARE CONTAINED IN APPLICABLE MATERIAL SPECIFICATION.

PROCESS SENSITIVE DIMENSION

DIMENSION ENCLOSED IN ( ) INDICATE HYPERFORM DIMENSIONING AND NO TOLERANCE UNLESS AS NOTED ELSEWHERE.

OPTIONAL DIMENSIONING: DIMENSIONING FROM DIMENSION LINE TO DIMENSION LINE IS > 10 DIMENSIONING FROM DIMENSION LINE TO DIMENSION LINE IS > 10

TOLERANCE UNLESS OTHERWISE SPECIFIED:  
DIMENSIONING FROM DIMENSION LINE TO DIMENSION LINE IS > 10  
DIMENSIONING FROM DIMENSION LINE TO DIMENSION LINE IS > 10  
ANGULAR TOLERANCE: ± 0.2°

DO NOT SCALE  
USE MATH DATA

THIRD ANGLE PROJECTION

CRIMP AREA PLATING NOTE (SEE NOTE 4)

CONTACT AREA PLATING TYPE (SEE NOTE 4)

RESTRICTED USAGE

REPLACED BY

TYPICAL SEALING CAVITY CONFIG.

TYPICAL CABLE SEAL

APPLICATION

(L)

B<sub>max</sub>

TYPE

DIA

SIZE (MM<sup>2</sup>)

MAT'L DESCRIPTION

ALTERNATIVE MAT'L SIZE

PREFERRED MAT'L SIZE