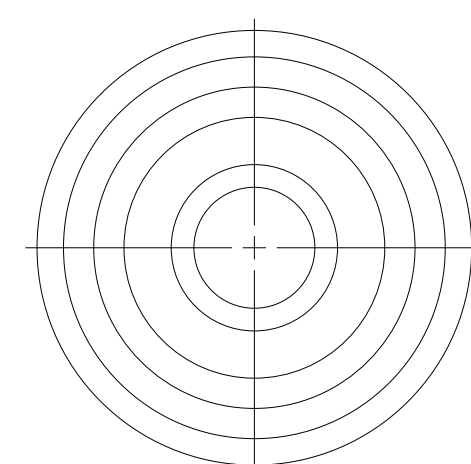
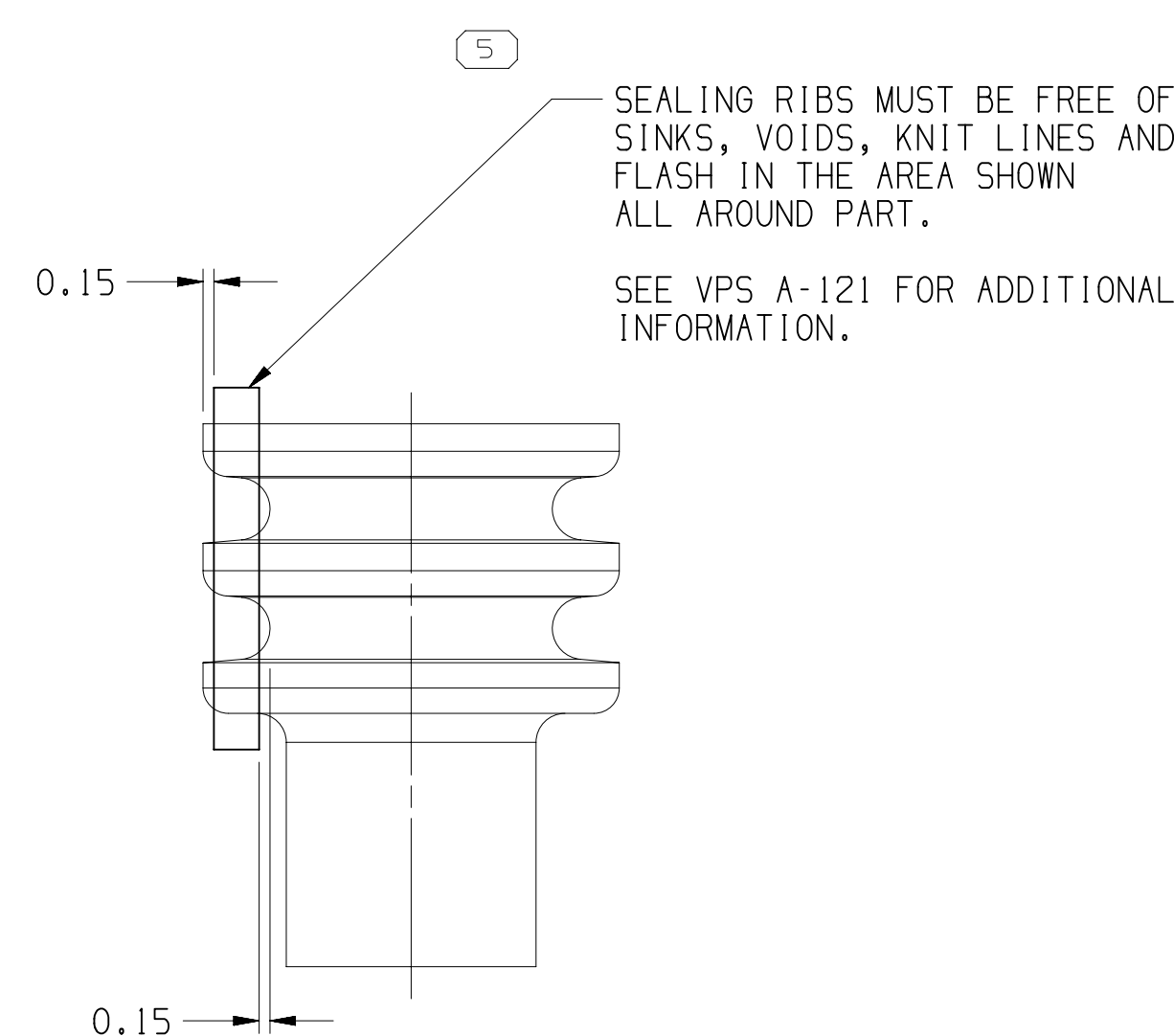
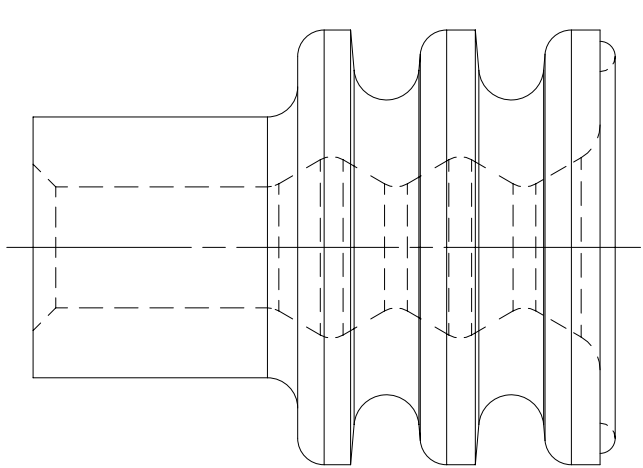
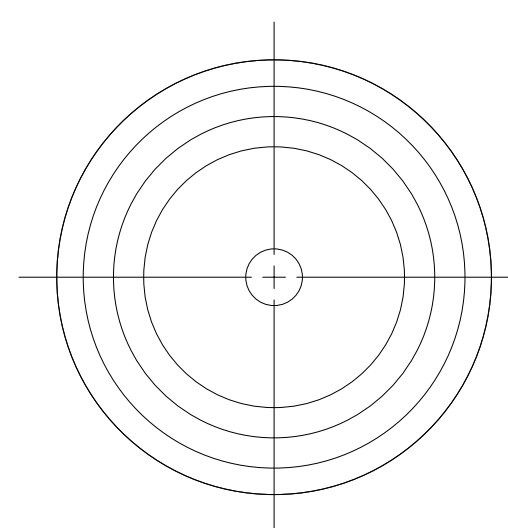


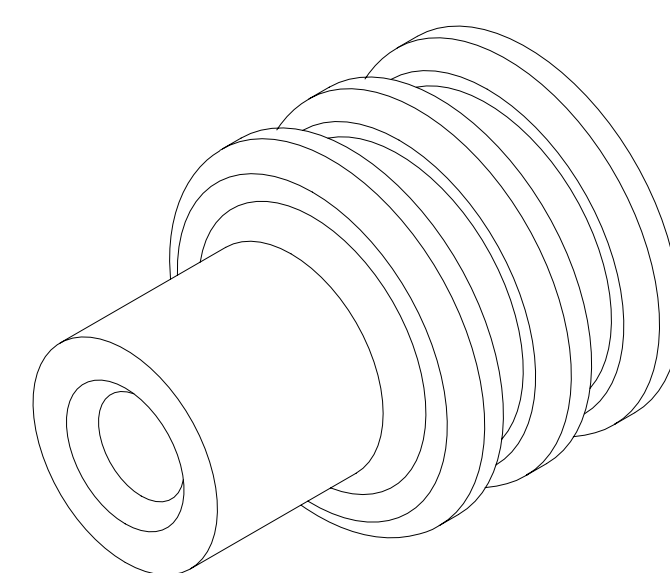
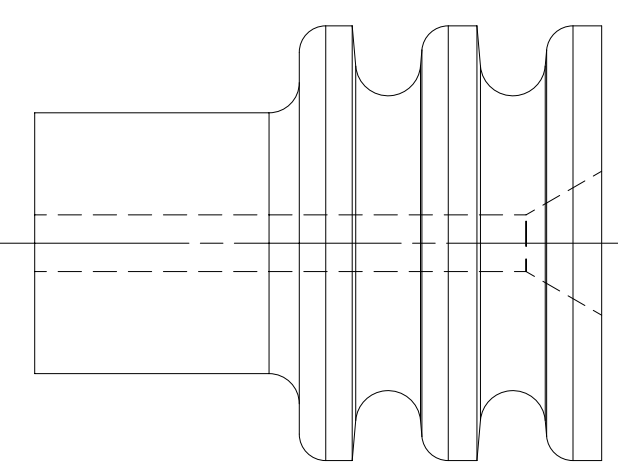
OPTIONAL CONSTRUCTION 2  
THIS IS THE PREFERRED CONSTRUCTION FOR NEW  
TOOL BUILDS  
(ANTI-STICK RING)



TYPE 401



TYPE 402  
SAME AS TYPE 401  
EXCEPT AS SHOWN



MISSING SYMBOLS		DWG STATUS				ZONE	REVISION HISTORY	AUTH	DR	APVD	REV	Z
		DATE	STG	REV	N/P							
NO MISSING SYMBOL NUMBER		03DE99	R	001	-	-	ALL PARTS - REDRAWN TO PD	990009	EOV	OMP	RH	
		03DE99	R	002	-	-	15324973-76 & 15324979 - RELEASED	990005	EOV	OMP	RH	M
		17MW10	R	003	-	-	15393249 - RELEASED	000005	MAC	MAC	MP	
		07N000	R	004	-	-	15324973-76 & 15324979 - REVISED	202978	JLZ	EAR	JR	
		07N000	R	005	-	-	15393249 - REVISED MYLAR & CABLE SEAL ASM COLUMN	204413	EAR	EAR	JR	
		19JA01	R	006	-	-	UPDATED PDM ATTRIBUTES	205150	JLZ	JLZ	JR	
		09JA01	R	007	-	-	15393249 - PM009216 WAS PM002196 AND "6" DIM WAS 5.75 +/- 0.15	205774	MAC	MAC	TP	
		29MR01	R	008	-	-	15393249 - MAT'L SPEC WAS PM009216	207669	FMH	FMH	TP	
		06N001	R	009	-	-	12048086 - UPDATED PDM ATTRIBUTES	215063	MRL	MRL	DL	L
		10FE03	R	10	-	-	15324974 AND 15324976 - UPDATED PDM ATTRIBUTES	236300	BRB	BRB	MLP	
		05PA04	R	11	-	-	12052925,12052924,15393249,15324979,15324976,15324975,15324973,12186769,12129926,12110213,12089678,12089441,12084193,12048087, AND 12048086 - UPDATED MAT'L SPECS, REMOVED MAT'L SPEC NOTES, NOTE 9 WAS 10 AND REMOVED OLD NOTE 9, REMOVED "Ø A" DIM 2 PLCS AND "A" COLUMN FROM CHART,ADDED COLOR COLUMN TO CHART	251238	BRB	BRB	MR	
		19N004	R	12	-	-	REVISED CHART	261378	MLM	MLM	MR	
		23FE05	R	13	-	-	12048086,12048087,12084193,12089678,12110213,12186769,12052924,12052925,12124669,12089442 AND 12186769-ADDED RESTRICTED STATUS: 15324973-4976 AND 15324979 MATL SPEC WAS M3466; ADDED NOTES COLUMN TO CHART; NOTE 7 WAS 9, NOTE 8 WAS 7 AND NOTE 9 WAS 8; REMOVED DIM "C" FROM TYPE 402 VIEW	265239	RH	RH	MR	K
		10JN05	R	14	-	-	REVISED GRAPHICS	269180	GPS	JVM	MPR	
		17FE06	R	15	-	-	REVISED CHART	277502	MM	MM	MR	
		03MR06	R	16	-	-	15324973-76 & 15324979 - MAT'L SPEC WAS M3469	277946	HCG	JVM	MR	
		17AU06	R	17	-	-	15324975 - OBSOLETE	273517	CCV	AUG	MR	J
		03CO06	R	18	-	-	ALL ACTIVE PARTS - ADDED SEALING RIBS VIEWS, OVERALL LENGTH LABEL, SEALING RIBS LABEL, ANTI-STICK RING OPTIONAL CONSTRUCTION 1 & 2 VIEWS AND DIMS (2 PLCS); 12084193 & 12124669 - REMOVED RESTRICTED, OPTIONAL CONSTRUCTION VIEWS, CONSTRUCTION LINE VIEWS, TYPES 404, 405 & 406 VIEWS AND COLUMNS C-F & G FROM CHART; DIM Ø 3.45 WAS ØC, DIM Ø 5.75 80.2 WAS ØG & DIM 7.5 WAS F, CABLE OD RANGE 1.2 - 1.7 WAS 1.29 - 1.7 AND EQUIVALENT CABLE SEAL COLUMN; 15324973-74, 15324976 & 15324979 - MAT'L SPEC M3469 WAS M3466 AND ADDED ALTERNATE MAT'L SPEC M3466XX	285252	UBD	FRG	MPR	
		11OC07	R	19	-	-	ALL ACTIVE PARTS - ADDED NOTE 10, USAGE COLUMN AND CHAMFER TO TYPES 401, REVISED TYPE 403 TO 401	402596	RH	RH	MPR	H
		30SE08	R	20	-	-	13713910 & 13713911 - RELEASED	406278	RRR	ACN	MPR	
		01MY09	R	21	-	-	ALL ACTIVE PARTS - UPDATED MAT'L SPEC TO GENERIC CALLOUT, REMOVED ALTERNATE MAT'L SPEC COLUMN FROM CHART; 12186769 - REMOVED NOTE FROM CHART AND 13713910 & 13713911 - OBSOLETE	407894	RTV	AUG	MPR	
		03JN09	R	22	-	-	13766444 - RELEASED	408127	ECB	AUG	JOS	
		24JL09	R	23	-	-	ALL PARTS - ADDED VOLUME COLUMN AND REMOVED COLOR COLUMN	408462	ECB	AUG	MPR	G
		30OC09	R	24	-	-	12084193 - UPDATED PDM ATTRIBUTES	409370	JAR	JAR	MPR	
		15MY10	R	25	-	-	UPDATED PDM ATTRIBUTES	410847	MAL	MAL	JFB	
		15JN10	R	26	-	-	12052924-25,12089442,12124669,12146011,12186770 & 13713910 - MOVED TO SHF 6; 12048086-87 & 12089678 - OBSOLETE AND ADDED "REPLACED BY" COLUMN ON CHART	411067	JAG	JAG	MPR	◊
		12JA11	R	27	-	-	15324973 - UPDATED PDM ATTRIBUTES	413028	AHY	DMC	GEM	
		13SE19	R	28	-	-	12089678 - REINSTATED AND ADDED RESTRICTED USAGE COLUMN	444511	JGO	JAA	JAF	

1. UNLESS OTHERWISE SPECIFIED AND/OR INDICATED:  
DIMENSIONS ARE TO FACE OF VIEW SHOWN AND  
AUTOMATICALLY ROUNDED BY COMPUTER FOR INSPECTION  
(SEE MATH MODEL FOR PRECISE DIMENSIONS). FOR ALL  
OTHER DIMENSIONS NOT SHOWN BUT REQUIRED FOR TOOL  
BUILD, SEE MATH MODEL FOR PRECISE TOOL PATH DATA.
2. SEALING RIBS ARE IDENTICAL, EXCEPT AS SHOWN.
3. PARTS NOT MADE ON FLASHLESS MOLDS MUST BE DEFLASHED,  
WASHED AND DRIED AFTER MOLDING. WASHING SHOULD OCCUR  
WITHIN 12 HOURS AFTER MOLDING.
4. PARTS ARE TO BE PACKAGED IN SEALED PLASTIC BAGS. GROSS  
WEIGHT INCLUDING CARTON IS NOT TO EXCEED 34 POUNDS.
5. PARTS MUST BE MADE FROM VIRGIN MATERIAL ONLY.
6. TO IMPROVE SEAL PROCESSING ON SLIPPERY OR SMOOTH CABLE  
INSULATION, THE APPLICATION ENGINEER MAY SURFACE THE  
NEXT SMALLER SEAL SIZE P/N IN PLACE OF THE INDICATED  
SEAL FOR THE "CABLE O.D." LISTED IN THE CHART.
7. DESIGNED FOR 0.8 MM<sup>2</sup> SOLID CORE DRAIN WIRE Ø 1.002 ±0.007
8. PARTS MADE OF FLUOROSILICONE MUST BE POST-CURED FOR  
4 HRS AT 400° F.
9. THIS PRODUCT IS NOT CATEGORIZED AS AN APPEARANCE ITEM, MINOR  
IMPERFECTIONS INCLUDING, BUT NOT LIMITED TO, FLOW MARKS, COLOR  
BLEMISHES, GATE VESTIGE, AND SOFT FLASH THAT DO NOT AFFECT THE  
FIT, FORM, OR FUNCTION OF THE PART ARE PERMISSIBLE PER DPNP-4.7-CS-01.
10. P/N 13713911 MUST BE POST-BAKED FOR 4 HOURS AT 400° F.
11. SEE 12010295 SHEET 6 FOR MYLAR ASSEMBLY INFORMATION.

DIMENSIONAL RANGE (MM)										CHART E	
FROM	> 0	> 20	> 30	> 70	> 100	> 150	> 200	> 250	> 300	> 400	
TO	20	30	70	100	150	200	250	300	400		
TOLERANCE UNLESS OTHERWISE SPECIFIED											
	±0.15	±0.2	±0.3	±0.4	±0.5	±0.6	±0.8	±1	±1.2		
ANGULAR TOLERANCE ±2°											

1. THE DRAWING THROUGH A PART NUMBER INDICATES THAT PHYSICAL PARTS ARE NOT AVAILABLE FOR ORDERING.		<b>ACTIVITY</b>	
PART NUMBERS THAT ARE IN A LINE PRESENT INDICATE THAT PHYSICAL PARTS ARE AVAILABLE FOR ORDERING.		CONNECTION SYSTEMS WARREN, OH COPYRIGHT 1989 ACTV, ALL RIGHTS RESERVED.	
CONTACT ACTV SALES TO ASSURE AVAILABILITY OF PARTS.		THIS DRAWING IS THE PROPERTY OF ACTV AND CONTAINS ACTV CONFIDENTIAL INFORMATION. THE REPRODUCTION, DISTRIBUTION AND UTILIZATION OF THIS DOCUMENT OR ITS RELATED CADD DATA, AS WELL AS COMMUNICATION OF ANY CONTENT TO OTHERS, WITHOUT EXPRESS AUTHORIZATION, IS PROHIBITED.	
DWG TITLE <b>PART DRAWING</b>		DATE	
STYLE		DFR	
VOLUME (CPI)		DISTR CODE	
UNLESS OTHERWISE SPECIFIED THIS DOCUMENT IS IN ACCORDANCE WITH ANSI Y14.5M-1994 STANDARD FOR THE FIRST ANGLE DRAWING METHOD AND THE TOLERANCING ADDENDUM - 1997, ALL GEOMETRIC TOLERANCES UNLESS OTHERWISE SPECIFIED BY DIMENSION LINE OR MFG. DOES NOT APPLY WHEN RELATIONSHIP BETWEEN FEATURES IS NOT INDICATED BY ORIENTATION OR POSITION TOLERANCES. SEPARATE POSITION CALLOUTS MAY BE ADDED SEPARATELY, REGARDLESS OF DATUM REFERENCE. ALL DIMENSIONS ARE IN MILLIMETERS		SUBSTANCES OF CONCERN AND RECYCLED CONTENT PER ACTV (1045040)	
REFERENCE		MATERIAL SEE CHART	
THIRD ANGLE PROJECTION		DRAWING NAME TAXI1 SEAL CBL IW M/P	
DO NOT SCALE		DRAWING NUMBER 12010295	
USE MATH DATA		SIZE A0 SCALE 1:1 FRAME NO. 1 OF 2 SHEET NO. 4 OF 8 STG RE HOP	