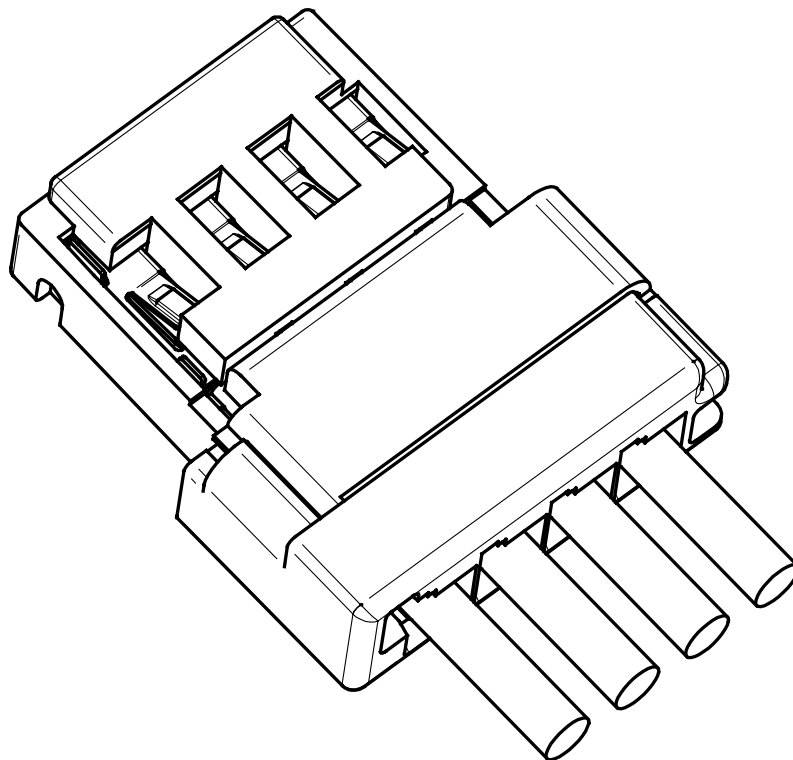


ASSEMBLY AND DISASSEMBLY INSTRUCTION FOR 4 WAY MTS 0,64 FEMALE CONNECTOR



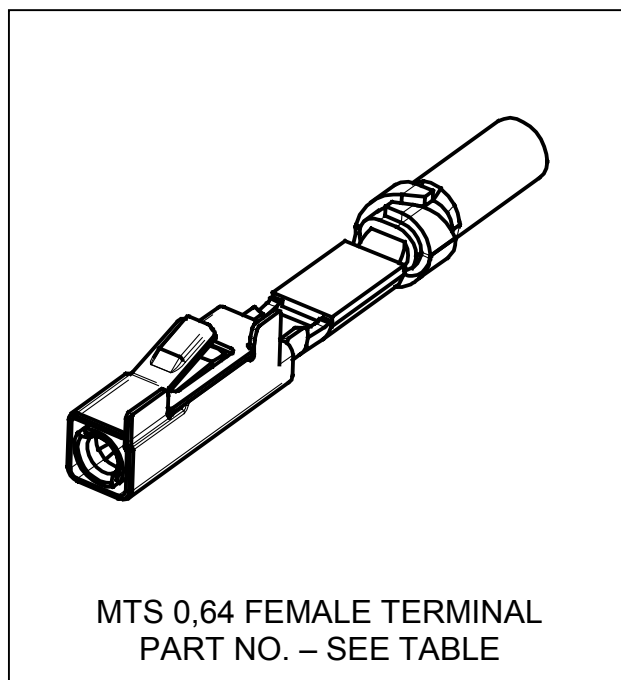
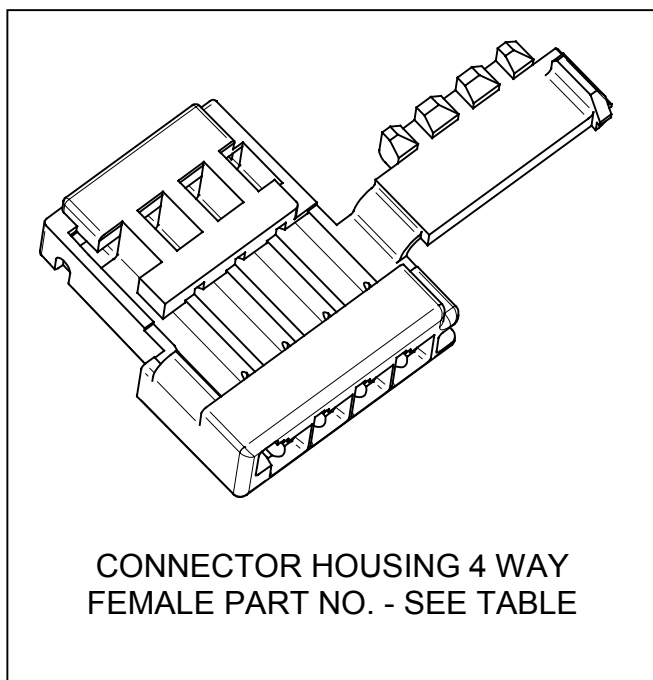
**THIS ASSEMBLY INSTRUCTION IS VALID FOR THE FOLLOWING
4 WAY FEMALE CONNECTORS:**

VERSION	PART NO.	ID	COLOUR
OPEL	15342528	406782	BLACK
SAAB	15345458	-	GREEN

MATING TERMINALS:

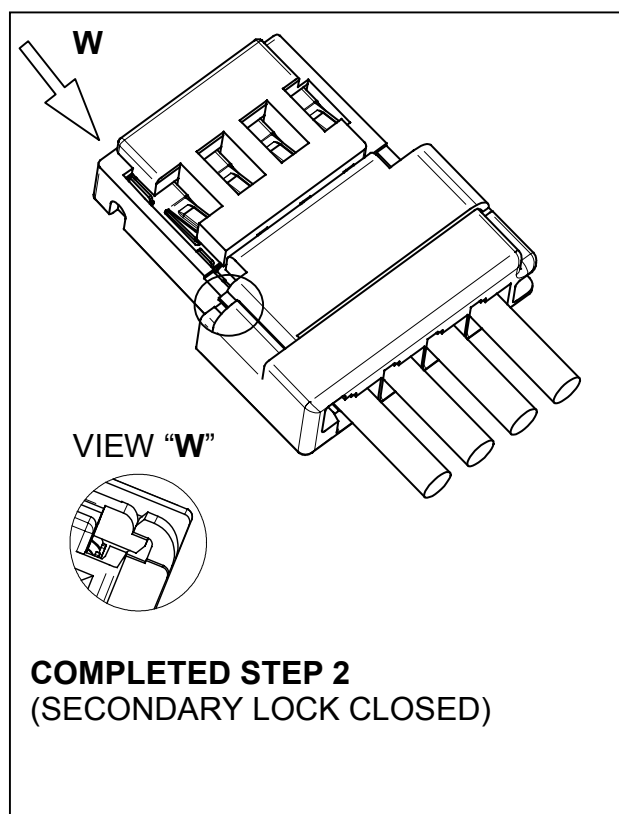
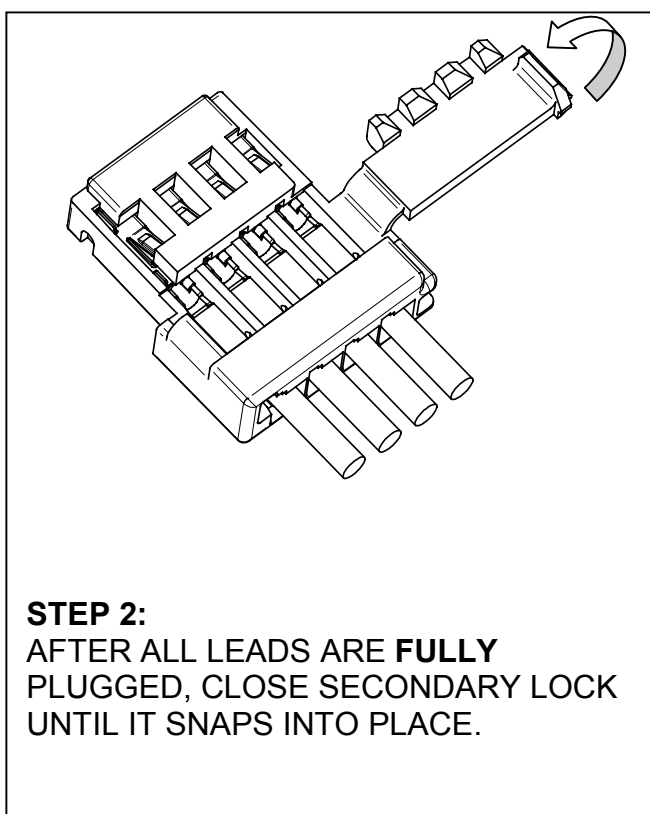
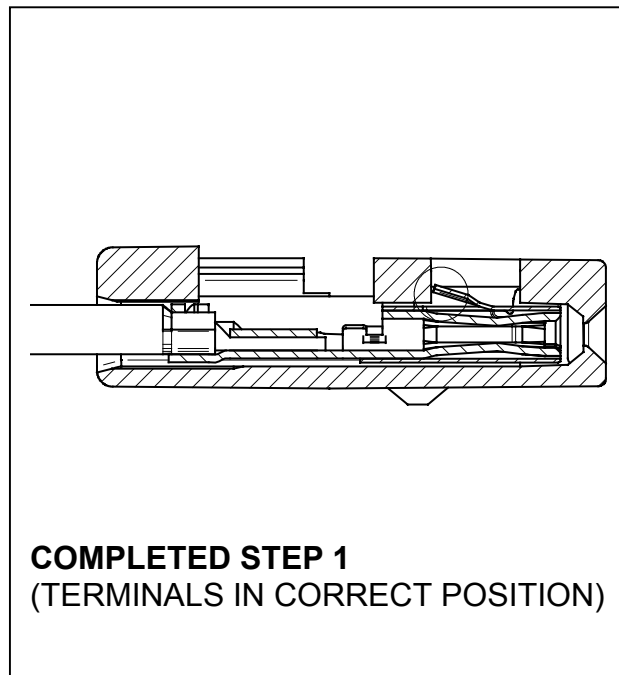
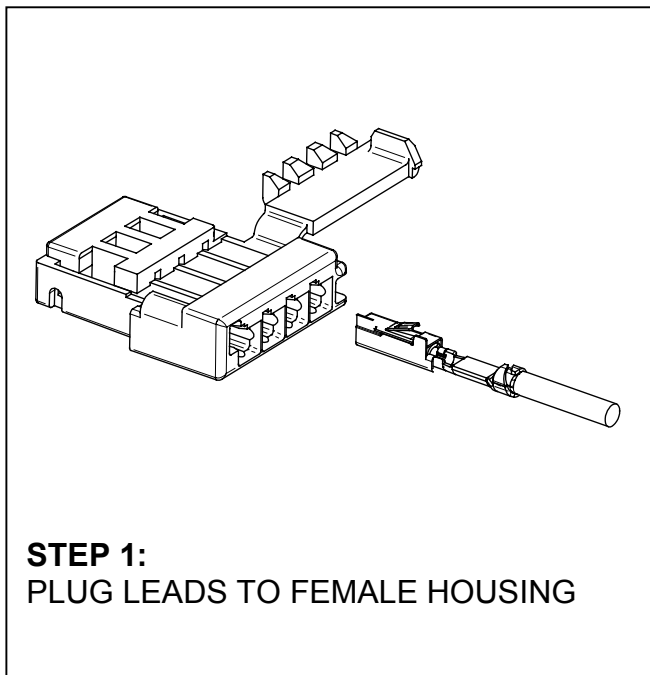
NAME	PART NO.	ID
MTS 0.64 FEMALE	15341541	406 651
MTS 0.64 FEMALE	15341542	406 652

COMPONENTS



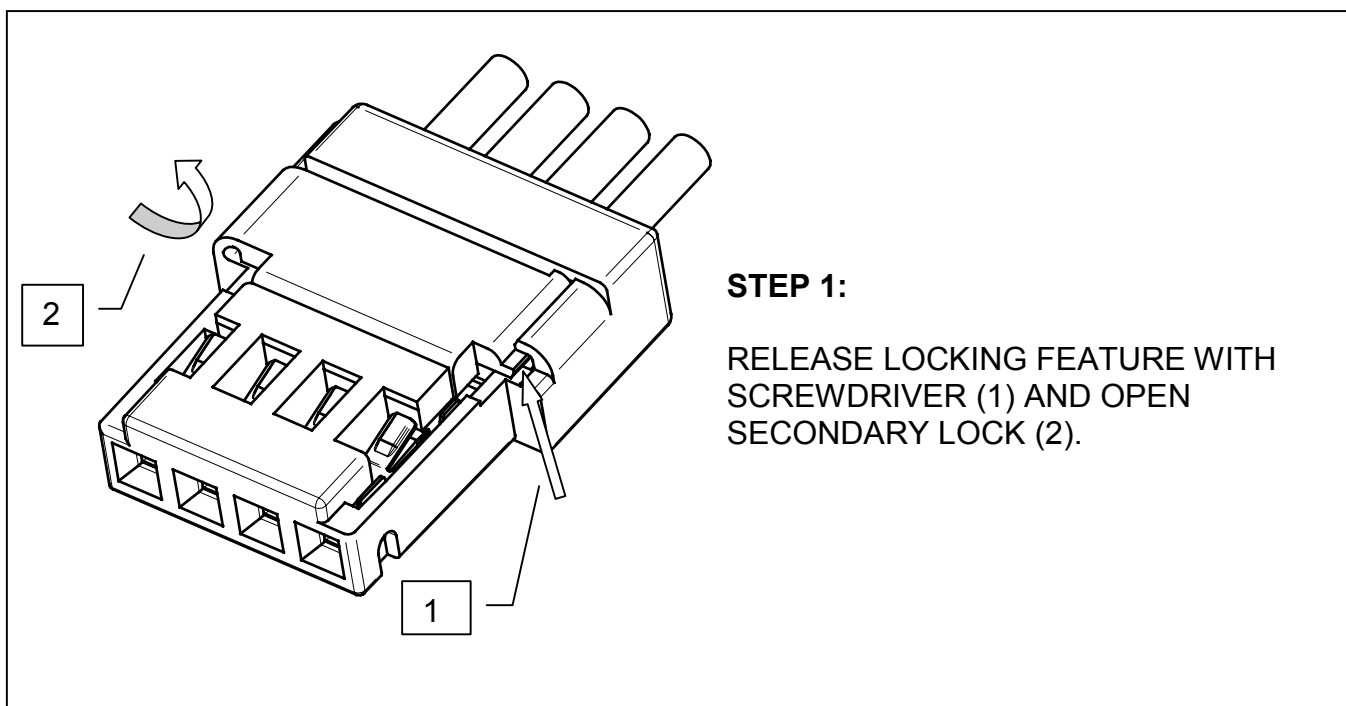
The information contained in these assembly instructions is subject to alteration without prior notice and does not represent any obligation on the part of DELPHI Packard Electric Systems. All information is correct at the time of going to press. Reprinting or translation is not permitted without written permission from DELPHI Packard Electric Systems.
© Copyright 2000 DELPHI Packard Electric Systems. All rights reserved.

ASSEMBLY STEPS



END OF ASSEMBLY INSTRUCTION
FOR 4 WAY FEMALE CONNECTOR

DISASSEMBLY INSTRUCTION 4 WAY FEMALE CONNECTOR



STEP 2:

REMOVE TERMINALS FROM CAVITIES USING TERMINAL REMOVAL TOOLS.
REMOVAL TOOL FOR MTS TERMINAL: PART NO. XXXXXX

END OF DISASSEMBLY INSTRUCTION
4 WAY FEMALE CONNECTOR