
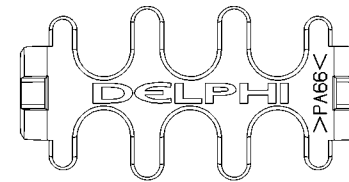
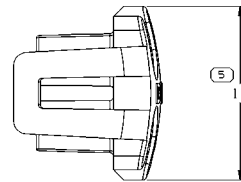
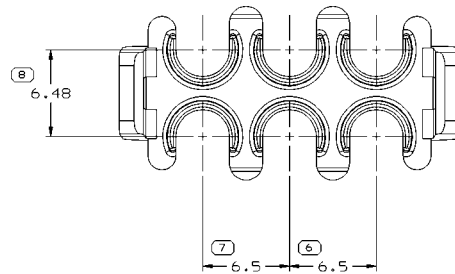
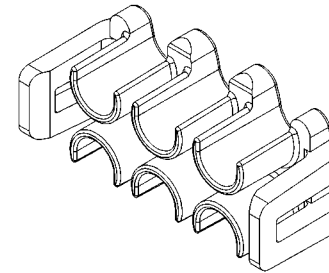
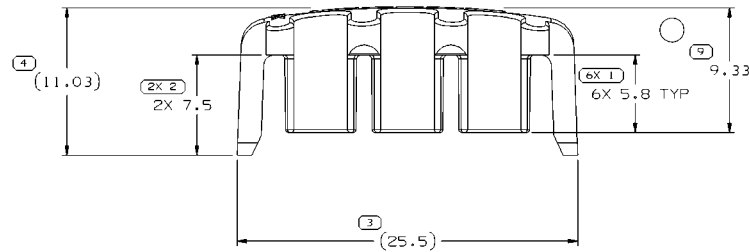


SYMBOL DEFINITION		MISSING SYMBOLS	
A DIMENSION WITHOUT AN INSPECTION REPORT SYMBOL  DOES NOT REQUIRE INSPECTION. IT MAY BE CONTROLLED ON THE INDIVIDUAL COMPONENT DRAWING.	TOTAL NO OF INSPECTIONS REQUIRED	15	NO MISSING SYMBOL NUMBER
	LAST NO. USED	9	

DWG STATUS		ZONE		REVISION HISTORY		AUTH		DR		APVD	
DATE	STG	REV	N/P	CHG							
23MR04	R	01	-	-	WAS PE101237 AND RELEASED	253076	EES	EES	MC		
19AU04	R	02	-	-	6X 5.8 TYP WAS 6X 5.5 TYP; REVISED NOTE #3 AND UPDATED FORMAT	258025	EES	EES	MC		
03ND04	R	02	AA	-	DIM #'S 6,7 & 8 WERE BASIC DIMS	260879	EES	EES	MC		
11ND04	R	02	AB	-	UPDATED PDM ATTRIBUTES	261198	TLD	TLD	MC		
23ND04	R	02	AC	-	ADDED DIM 9.33; ADDED PROCESS SENSITIVE DIM	261124	ADK	ADK	MC		



NOTES

- UNLESS OTHERWISE SPECIFIED AND/OR INDICATED: DIMENSIONS ARE TO FACE OF VIEW SHOWN AND AUTOMATICALLY ROUNDED BY COMPUTER FOR INSPECTION (SEE MATH MODEL FOR PRECISE DIMENSIONS). FOR ALL OTHER DIMENSIONS NOT SHOWN BUT REQUIRED FOR TOOL BUILD, SEE MATH MODEL FOR PRECISE TOOL PATH DATA.
- MATERIAL RECYCLING CODE PER ISO 11469: (1)X(0.1) RAISED CHARACTERS AS SHOWN TO BE LOCATED ON ANY EXTERIOR SURFACE. OPTIONAL CONSTRUCTION TO BE NO MATERIAL RECYCLING CODE.
- MATING COMPONENTS OR EQUIVALENT: CONNECTORS: 15476189, 15476190, 15476191, 15476192
- (1)X(0.1) RAISED DELPHI CORPORATE BRAND TO BE LOCATED ON ANY EXTERIOR SURFACE, PREFERABLY VISIBLE AT FINAL ASSEMBLY. OPTIONAL CONSTRUCTION TO BE "PED" OR NO LOGO.

DIMENSIONAL RANGE (MM)		CHART E1	
FROM	TO	FROM	TO
> 0	> 20	> 0	> 20
> 20	> 30	> 30	> 40
> 30	> 40	> 40	> 50
> 40	> 50	> 50	> 60
> 50	> 60	> 60	> 70
> 60	> 70	> 70	> 80
> 70	> 80	> 80	> 90
> 80	> 90	> 90	> 100
> 90	> 100	> 100	> 110
> 100	> 110	> 110	> 120
> 110	> 120	> 120	> 130
> 120	> 130	> 130	> 140
> 130	> 140	> 140	> 150
> 140	> 150	> 150	> 160
> 150	> 160	> 160	> 170
> 160	> 170	> 170	> 180
> 170	> 180	> 180	> 190
> 180	> 190	> 190	> 200
> 190	> 200	> 200	> 210
> 200	> 210	> 210	> 220
> 210	> 220	> 220	> 230
> 220	> 230	> 230	> 240
> 230	> 240	> 240	> 250
> 240	> 250	> 250	> 260
> 250	> 260	> 260	> 270
> 260	> 270	> 270	> 280
> 270	> 280	> 280	> 290
> 280	> 290	> 290	> 300
> 290	> 300	> 300	> 310
> 300	> 310	> 310	> 320
> 310	> 320	> 320	> 330
> 320	> 330	> 330	> 340
> 330	> 340	> 340	> 350
> 340	> 350	> 350	> 360
> 350	> 360	> 360	> 370
> 360	> 370	> 370	> 380
> 370	> 380	> 380	> 390
> 380	> 390	> 390	> 400
> 390	> 400	> 400	> 410
> 400	> 410	> 410	> 420
> 410	> 420	> 420	> 430
> 420	> 430	> 430	> 440
> 430	> 440	> 440	> 450
> 440	> 450	> 450	> 460
> 450	> 460	> 460	> 470
> 460	> 470	> 470	> 480
> 470	> 480	> 480	> 490
> 480	> 490	> 490	> 500
> 490	> 500	> 500	> 510
> 500	> 510	> 510	> 520
> 510	> 520	> 520	> 530
> 520	> 530	> 530	> 540
> 530	> 540	> 540	> 550
> 540	> 550	> 550	> 560
> 550	> 560	> 560	> 570
> 560	> 570	> 570	> 580
> 570	> 580	> 580	> 590
> 580	> 590	> 590	> 600
> 590	> 600	> 600	> 610
> 600	> 610	> 610	> 620
> 610	> 620	> 620	> 630
> 620	> 630	> 630	> 640
> 630	> 640	> 640	> 650
> 640	> 650	> 650	> 660
> 650	> 660	> 660	> 670
> 660	> 670	> 670	> 680
> 670	> 680	> 680	> 690
> 680	> 690	> 690	> 700
> 690	> 700	> 700	> 710
> 700	> 710	> 710	> 720
> 710	> 720	> 720	> 730
> 720	> 730	> 730	> 740
> 730	> 740	> 740	> 750
> 740	> 750	> 750	> 760
> 750	> 760	> 760	> 770
> 760	> 770	> 770	> 780
> 770	> 780	> 780	> 790
> 780	> 790	> 790	> 800
> 790	> 800	> 800	> 810
> 800	> 810	> 810	> 820
> 810	> 820	> 820	> 830
> 820	> 830	> 830	> 840
> 830	> 840	> 840	> 850
> 840	> 850	> 850	> 860
> 850	> 860	> 860	> 870
> 860	> 870	> 870	> 880
> 870	> 880	> 880	> 890
> 880	> 890	> 890	> 900
> 890	> 900	> 900	> 910
> 900	> 910	> 910	> 920
> 910	> 920	> 920	> 930
> 920	> 930	> 930	> 940
> 930	> 940	> 940	> 950
> 940	> 950	> 950	> 960
> 950	> 960	> 960	> 970
> 960	> 970	> 970	> 980
> 970	> 980	> 980	> 990
> 980	> 990	> 990	> 1000

DWG TYPE		PART DRAWING	
STYLE			
VOLUME (CWP)	0.821	DISTR CODE	D
UNLESS OTHERWISE SPECIFIED			
THIS DOCUMENT IS IN ACCORDANCE WITH ASME Y14.5M-1994 AS AMENDED BY THE 4M GLOBAL DIMENSIONING AND TOLERANCING ADDENDUM - 1997. ALL GEOMETRIC TOLERANCES AND RELATED DATUMS APPLY PER RULE #1 UNLESS FORM AT MCI DOES NOT APPLY WHEN RELATIONSHIP BETWEEN FEATURES IS ESTABLISHED BY ORIENTATION OR LOCATION TOLERANCES. SEPARATE POSITION CALLOUTS MAY BE GAGED SEPARATELY, REGARDLESS OF DATUM REFERENCE. ALL DIMENSIONS ARE IN MILLIMETERS			
REFERENCE			
THIRD ANGLE PROJECTION			
DO NOT SCALE			
USE MATH DATA			

DELPHI	
DELPHI PACKARD ELECTRIC SYSTEMS WARREN, OH	
DR	DATE
APV01 E. SEIDEL	23MR04
APV02 E. SEIDEL	23MR04
APV03 MAL CULP	23MR04
APV04	
APV05	
SUBSTANCES OF CONCERN AND RECYCLED CONTENT PER DELPHI 10949001	
MATERIAL M3592009 PA66 HS 1M PPL	
DRAWING NAME LOCK TPA PPL	
DRAWING NUMBER 15476195	
SIZE A1	SCALE 5:1
FRAME NO 1	SHEET NO 1
STG R	REV 02
N/P	AC