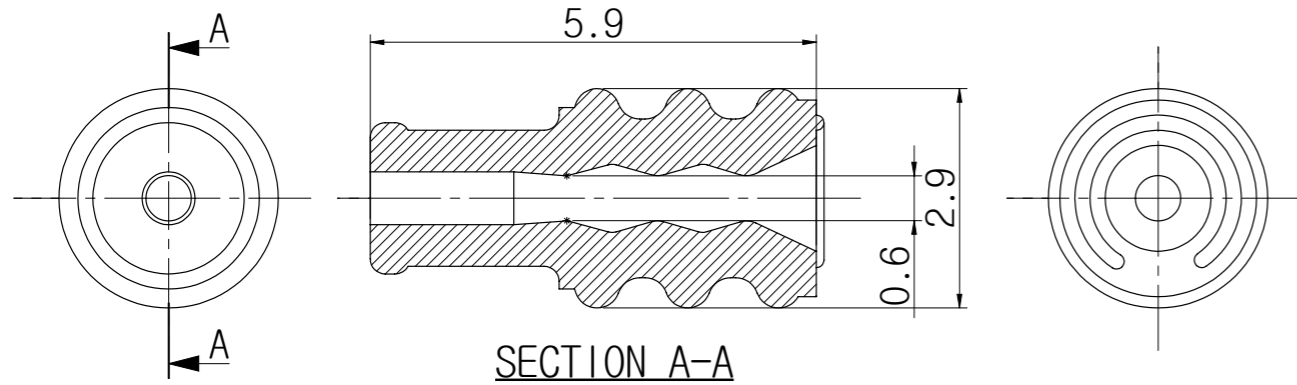
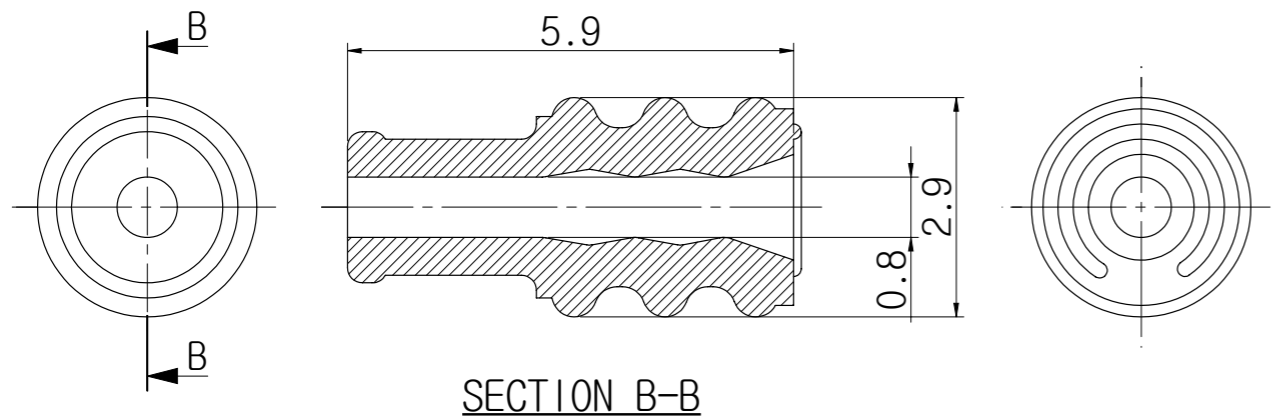


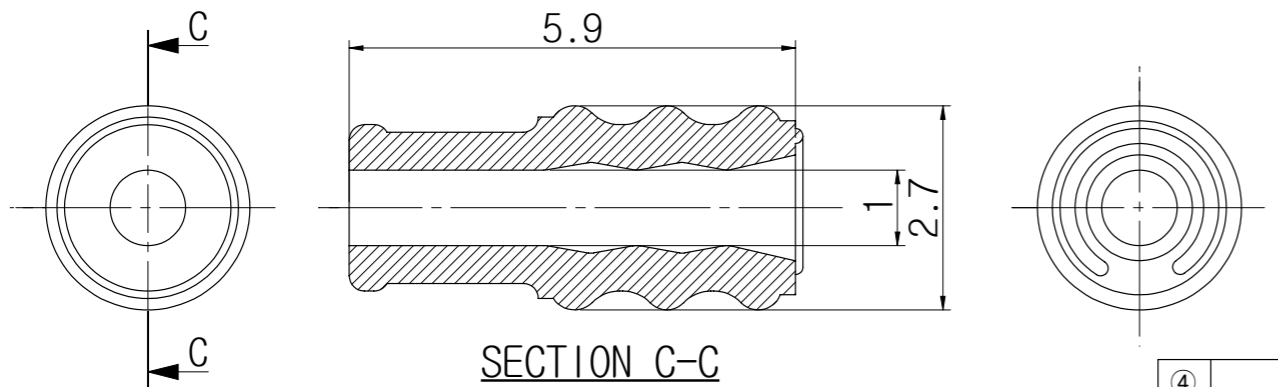
① W/S TWP-0.9S(MB)



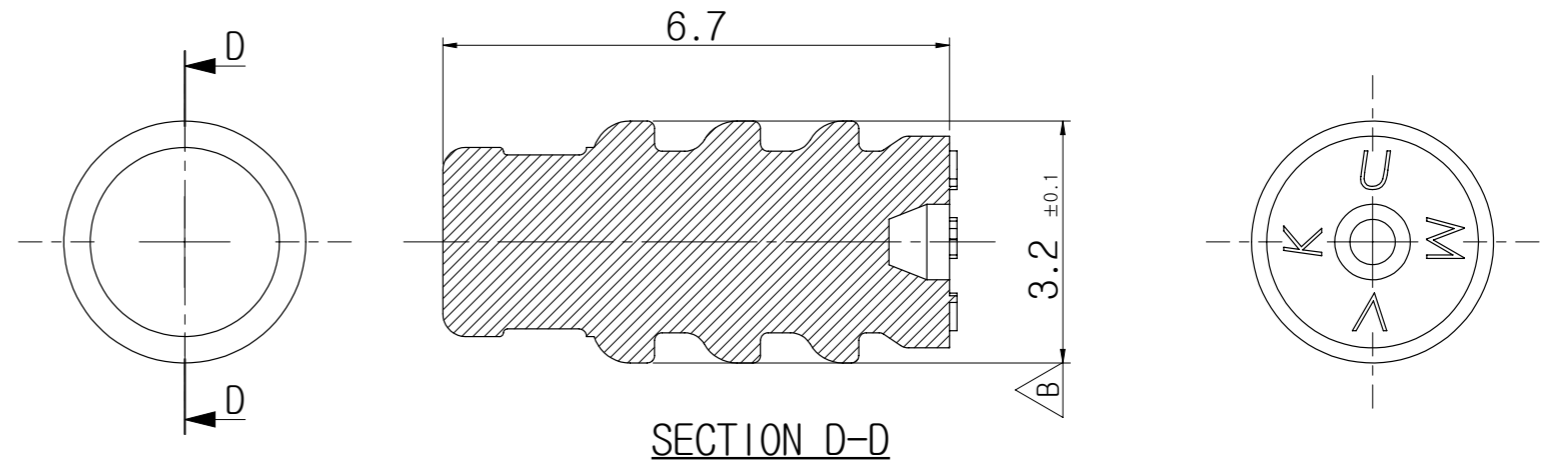
② W/S TWP-1.4S(BR)



③ W/S TWP-1.6S(GN)



④ W/S TWP-V(R)



- NOTES -

- BEFORE USING, CHECK THE HARMFUL CRACK, BURR, ETC.
- GENERAL TOLERNCES - SEE BELOW.
- MARKING & CAV. No. BY AS GENERAL RULE OF KUM.
- APPLICATION CONNECTOR : TWP SERIES CONN.
- APPLICATION WIRE

WIRE DIAMETER	KUM PART NAME	KUM P/No.	APTIV P/No.
Φ 0.9-1.1	W/S TWP-0.9S(MB)	EU020-01140	35187200
Φ 1.4-1.5	W/S TWP-1.4S(BR)	EU020-01050	15517491
Φ 1.6-1.7	W/S TWP-1.6S(GN)	EU020-00030	15523552
-	W/S TWP-V(R)	EU020-00060	15517565

6. W/S TWP-V(R) : 15517565/EU020-00060 (HARDNESS : 50Hs)

7. APTIV Drawing No : 35352309

GENERAL TOLERANCE							
	10MAX	50MAX	100MAX	150MAX	200MAX	200VR	ANGLE
A	±0.2	±0.3	±0.5	±0.8	±1.0	±1.4	±30'

NO.	KUM PART NAME	KUM P/No.	APTIV P/No.	COLOR	MATERIAL	
④	W/S TWP-V(R)	EU020-00060	15517565	RED	SI-RUBBER	
③	W/S TWP-1.6S(GN)	EU020-00030	15523552	GREEN	SI-RUBBER	
②	W/S TWP-1.4S(BR)	EU020-01050	15517491	BROWN	SI-RUBBER	
①	W/S TWP-0.9S(MB)	EU020-01140	35187200	MARIN BLUE	SI-RUBBER	
THIRD ANGLE PROJECTION	A	10/1	KOT	KOT	KNJ	CJW
TOLERANCE	SCALE	DESIGN	DRAWN	CHECKED	APPROVED	

APVD	DATE	NOTE No.	SYM	ALTERATION	DWN
	19.08.19	-	△i	ADDED APTIV P/No.	KKJ
CJW	16.07.07	E016-0294	△C	CHANGED THE NOTE	KKJ
CJW	12.04.30	E012-0077	△B	CHANGED THE SHAPE	KHR
CJW	11.04.28	-	△A	CHANGED FORM	LBH
CJW	10.01.18	-	△-	RELEASED	KOT

DRAWING NAME W/S TWP-1.4S(BR)
 DRAWING No. EU020-01050-C01

