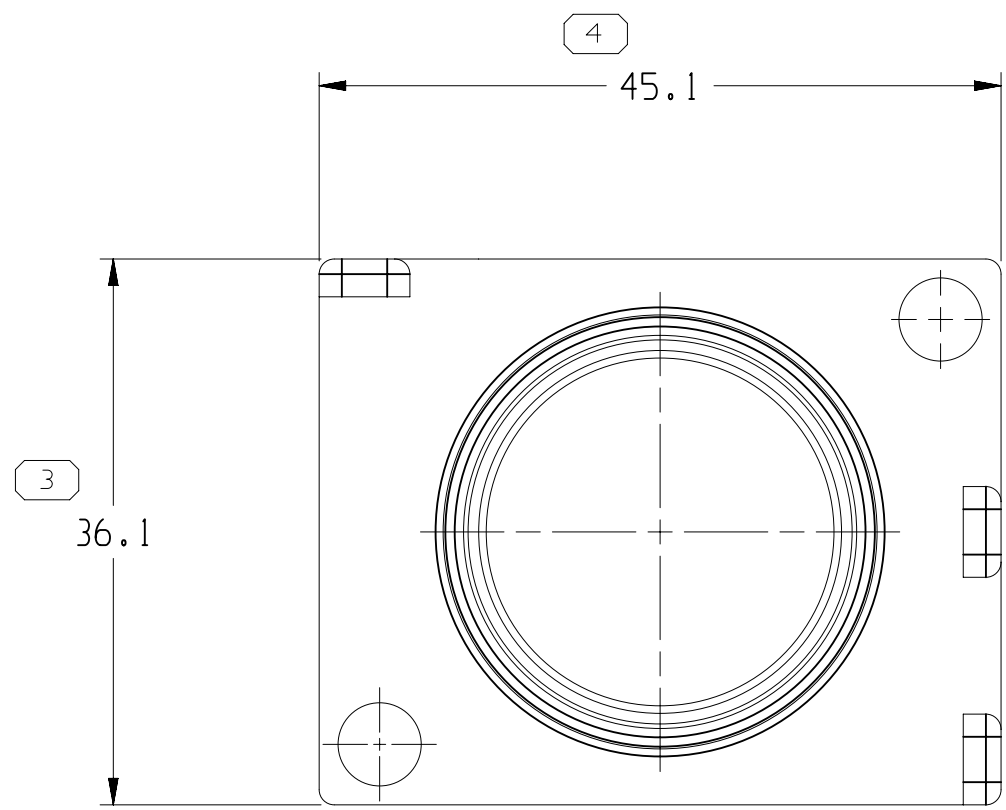
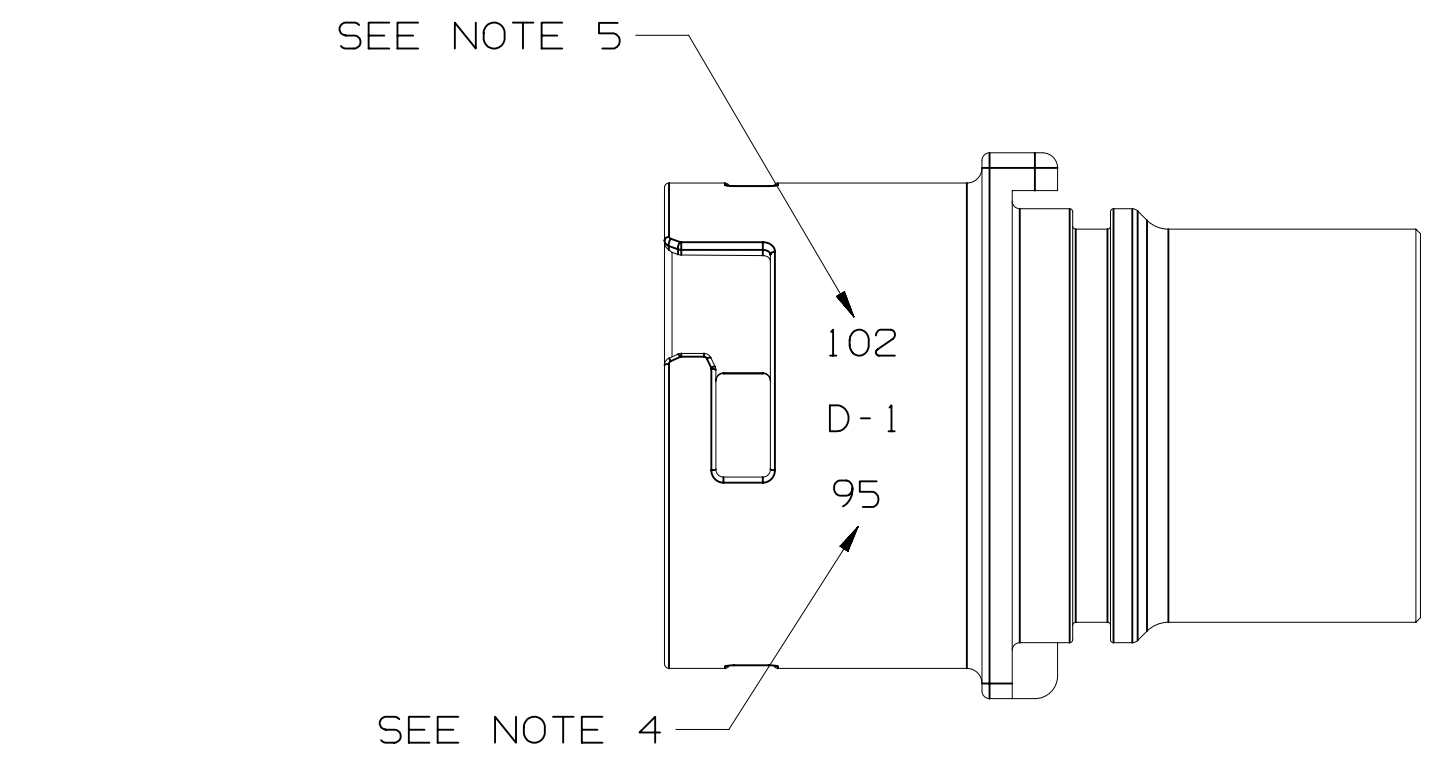
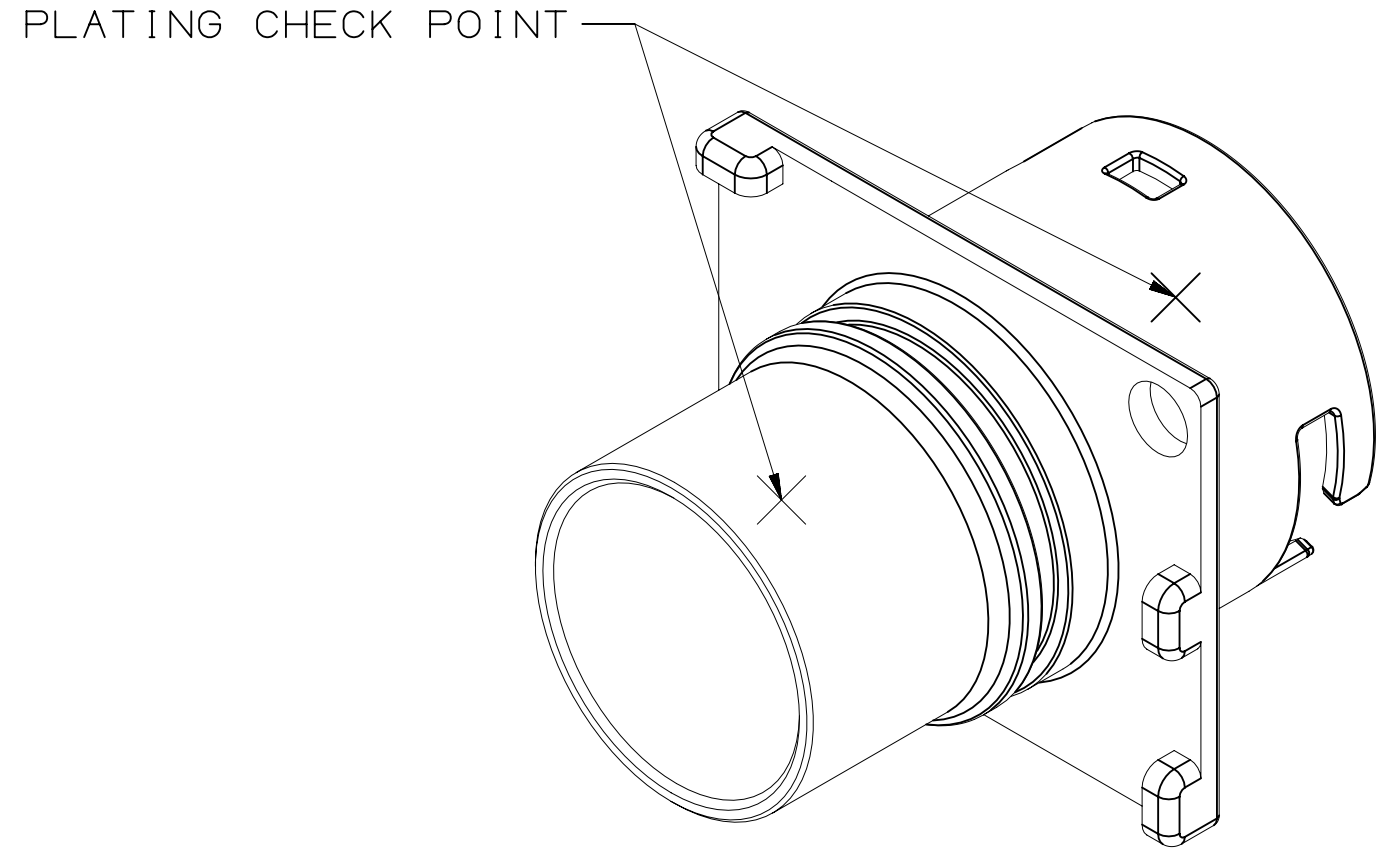
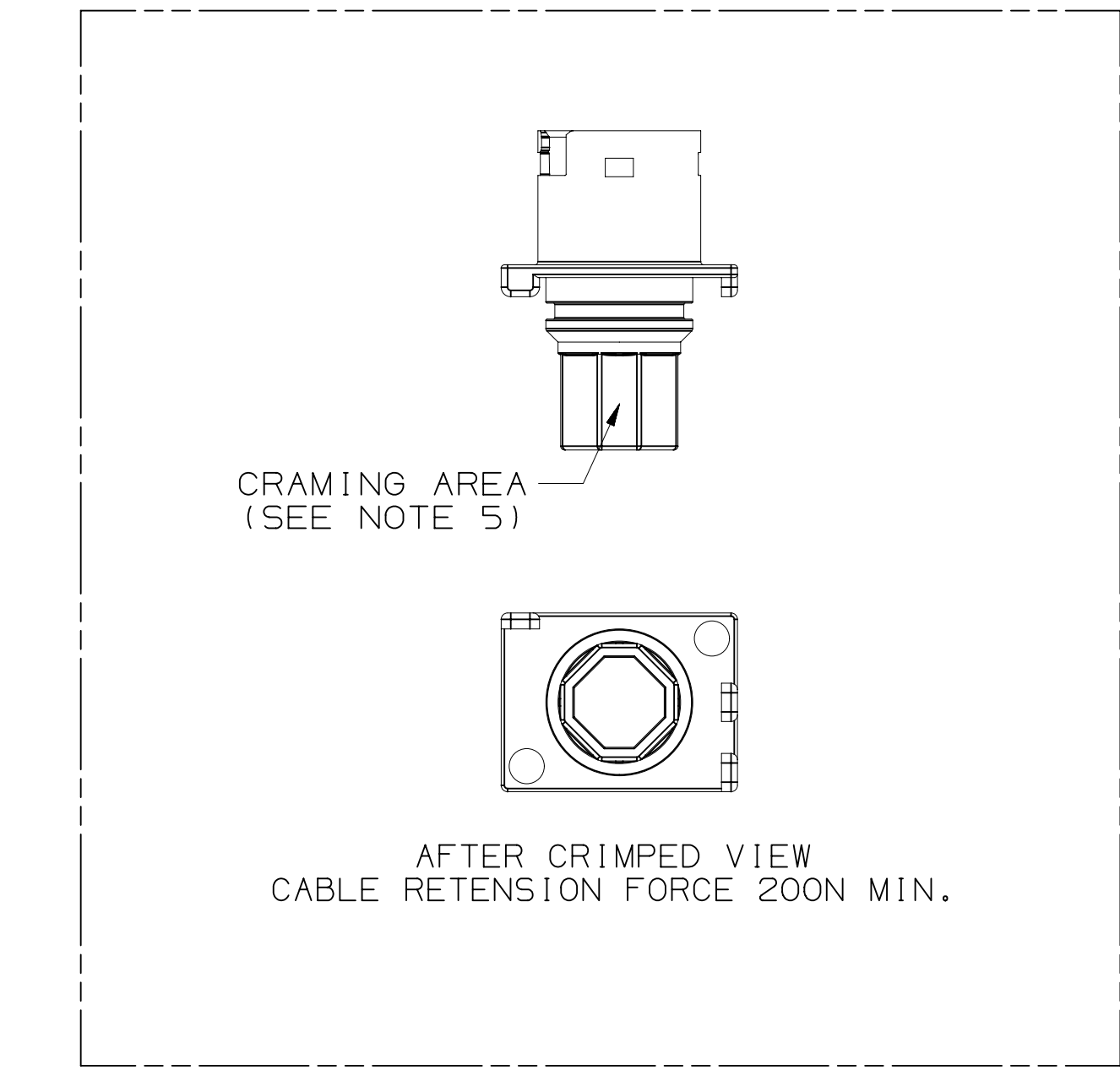
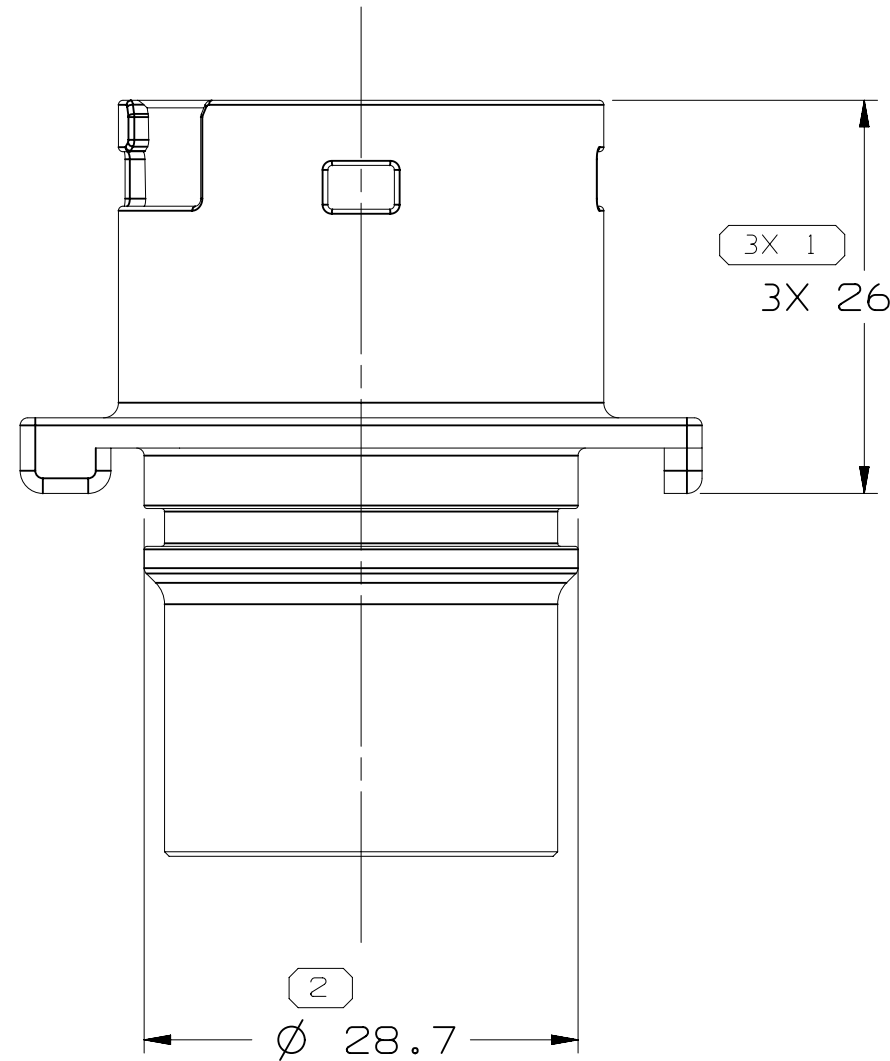


35235983	01	-	SEE NOTE 6	8.814	95	109
35235982	01	-	SEE NOTE 6	8.814	95	108
35235981	01	-	SEE NOTE 6	8.814	95	104
35235980	01	-	SEE NOTE 6	8.814	95	103
35235654	01	-	SEE NOTE 6	8.814	95	102
35255189	01	-	SEE NOTE 6	8.895	95	101
35274905	01	-	SEE NOTE 6	9.423	70	109
35274904	01	-	SEE NOTE 6	9.423	70	108
35274903	01	-	SEE NOTE 6	9.423	70	104
35274902	01	-	SEE NOTE 6	9.423	70	103
35274901	01	-	SEE NOTE 6	9.423	70	102
35274900	01	-	SEE NOTE 6	9.504	70	101
PART NO.	REV	N/P	MATERIAL	VOLUME CM³	CABLE SIZE MM²	TYPE

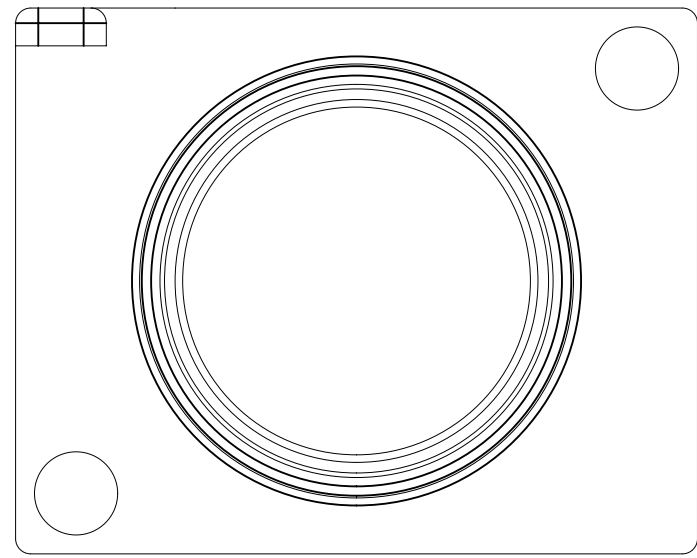


TYPE 101

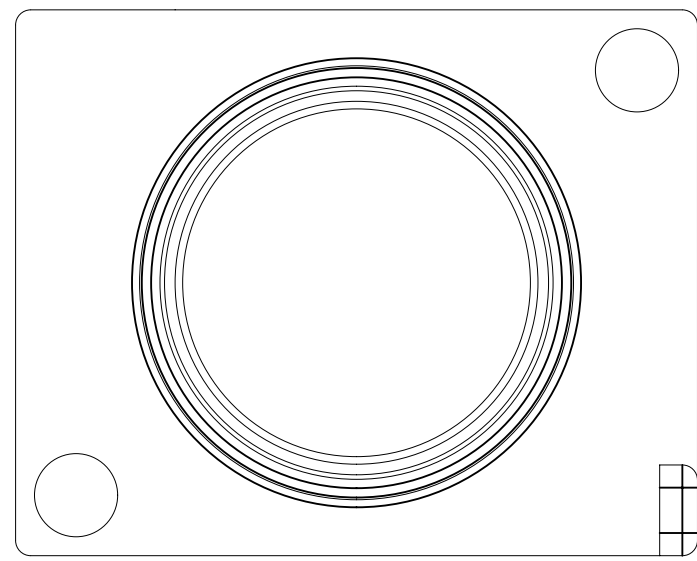


NOTES

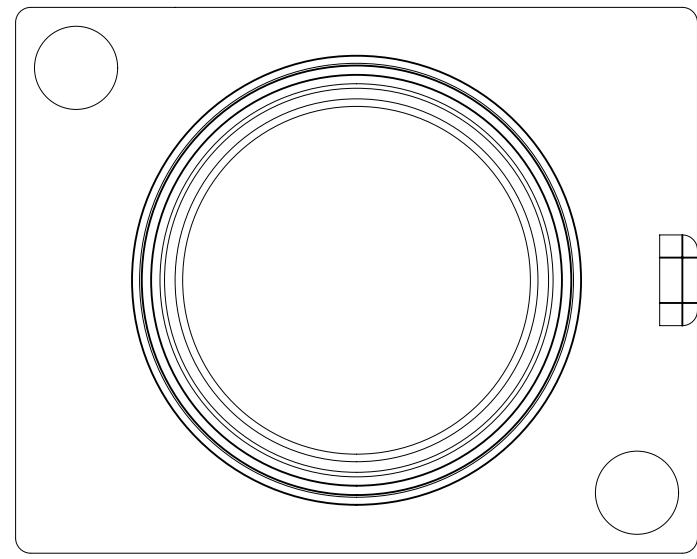
- UNLESS OTHERWISE SPECIFIED AND/OR INDICATED:
DIMENSIONS ARE TO FACE OF VIEW SHOWN AND AUTOMATICALLY ROUNDED BY COMPUTER FOR INSPECTION (SEE MATH MODEL FOR PRECISE DIMENSIONS). FOR ALL OTHER DIMENSIONS NOT SHOWN BUT REQUIRED FOR TOOL BUILD, SEE MATH MODEL FOR PRECISE TOOL PATH DATA.
- PLATING:
3-16 μ m Cu UNDER PLATING
2-6 μ m Ni MEDIUM PLATING
MATTE TIN 2-6 μ m PLATING OVER THE SURFACE PER MIL-T-10727.
- THIS PART USED IN ASSEMBLIES UTILIZING HIGH VOLTAGE PASSTHROUGH CONNECTOR AND HV SHIELDED CABLE PER COROPLAST LV216-2 TABLE A.2
- MARK "50" PER ISO 11469. (1.51X(3.5)X(0.2HEIGHT) CHARACTERS AS SHOWN TO BE LOCATED ON ANY EXTERIOR SURFACE.
- ALWAYS CHOOSE FROM INDEXES FROM TYPE 102 103 104 OR TYPE 105 106 107 108 109 FOR ONE SERIES. AND MARK TYPE NO. (21X(1.01X(0.2DEPTH)) CHARACTERS AS SHOWN FOR EACH TYPE ON ANY EXTERIOR SURFACE.
- USING MATERIAL: ZINC ALLOY 5#
- COMPONENT SURFACE MUST BE FREE OF SERIOUS SCARTCH AND STUCTURE DEFECT WHICH EFFECTS FUNCTION.
- FIT FOR "50mmA2 COROPLAST SHIELDINGCABLE, FHLR26CB26 / T180,600V" OR EQUIVALENT. MATING WITH CABLE SEAL (PN 33112616), TPA LOCK(PN 33112613), FERRULE(PN 33295903) AND O-RING SEAL(PN13888025).



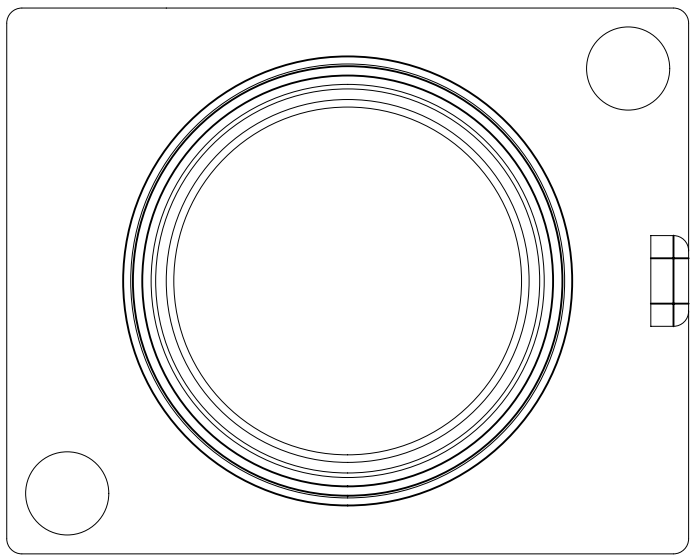
TYPE 102
SAME AS TYPE 101
EXCEPT AS SHOWN



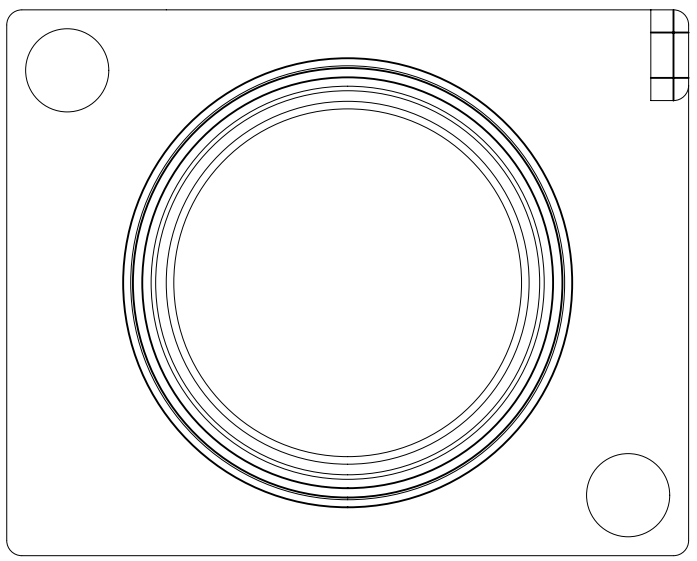
TYPE 104
SAME AS TYPE 101
EXCEPT AS SHOWN



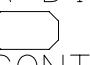
TYPE 109
SAME AS TYPE 101
EXCEPT AS SHOWN



TYPE 103
SAME AS TYPE 101
EXCEPT AS SHOWN

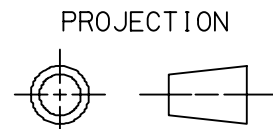



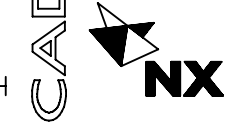
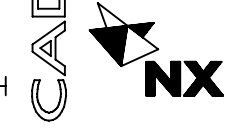
TYPE 108
SAME AS TYPE 101
EXCEPT AS SHOWN

SYMBOL DEFINITION		
A DIMENSION WITHOUT AN INSPECTION REPORT SYMBOL  DOES NOT REQUIRE INSPECTION. IT MAY BE CONTROLLED ON THE INDIVIDUAL COMPONENT DRAWING.	TOTAL NO OF INSPECTIONS REQUIRED	6
	LAST NO. USED	4

MISSING SYMBOLS		NO MISSING SYMBOL NUMBER	
DATE	STG	REV	N/P
06SE18	R	01	-

REVISION HISTORY		AUTH	
PART DRAWING CREATED		440997	CF

THIRD ANGLE PROJECTION		DO NOT SCALE	
			

USE MATH DATA		NX	
			

DELPHI	
CONNECTION SYSTEMS	
Copyright 2018 Delphi, All Rights Reserved.	
THIS DRAWING IS THE PROPERTY OF APVIV AND CONTAINS APVIV CONFIDENTIAL INFORMATION. THE REPRODUCTION, DISTRIBUTION AND UTILIZATION OF THIS DOCUMENT OR ITS RELATED CAD DATA, AS WELL AS COMMUNICATION OF ANY CONTENT TO OTHERS, WITHOUT EXPRESS AUTHORIZATION, IS PROHIBITED.	
DR	DATE
APV01 CHARD FANG	06SE18
APV02 WEIGUO JIANG	06SE18
APV03 CHARD FANG	06SE18
APV04	
APV05	
SUBSTANCES OF CONCERN AND RECYCLED CONTENT PER DELPHI 10949801	
MATERIAL: SEE CHART	
DRAWING NUMBER	
TAXI COV SHIELD	
DRAWING NUMBER	
35257766	
SIZE	SCALE
A0	2:1
FRAME NO	SHEET NO
1	1
STG	REV
R	01