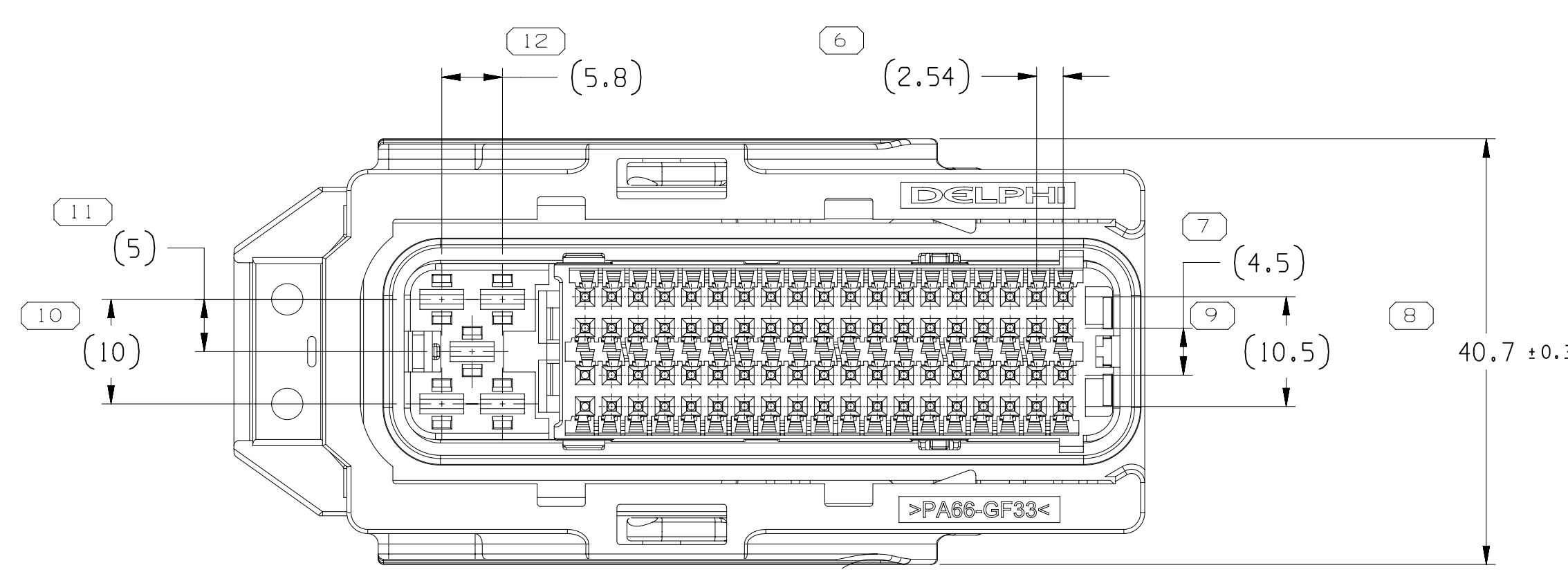
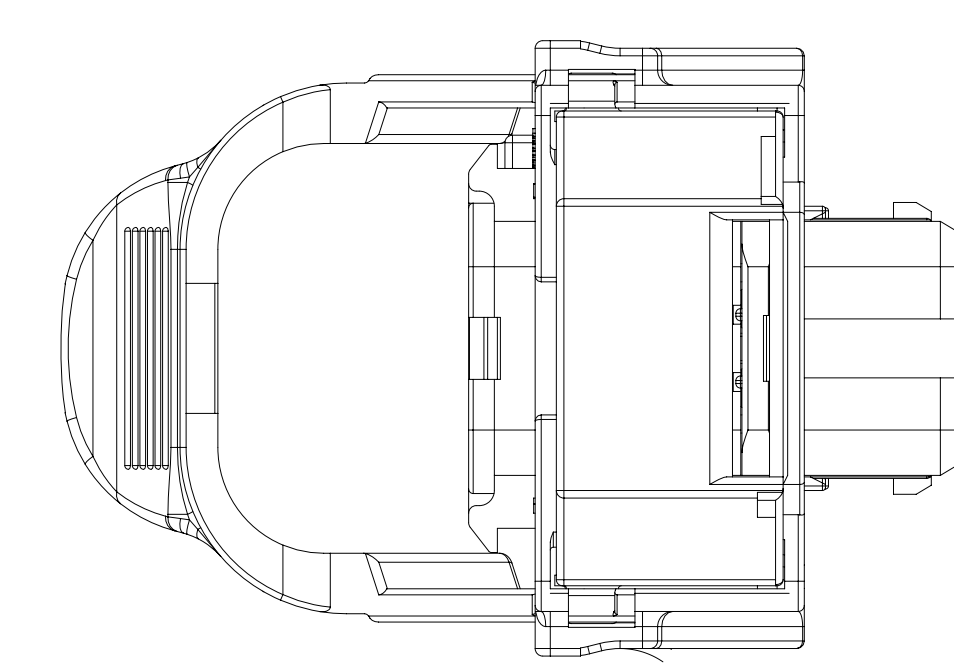
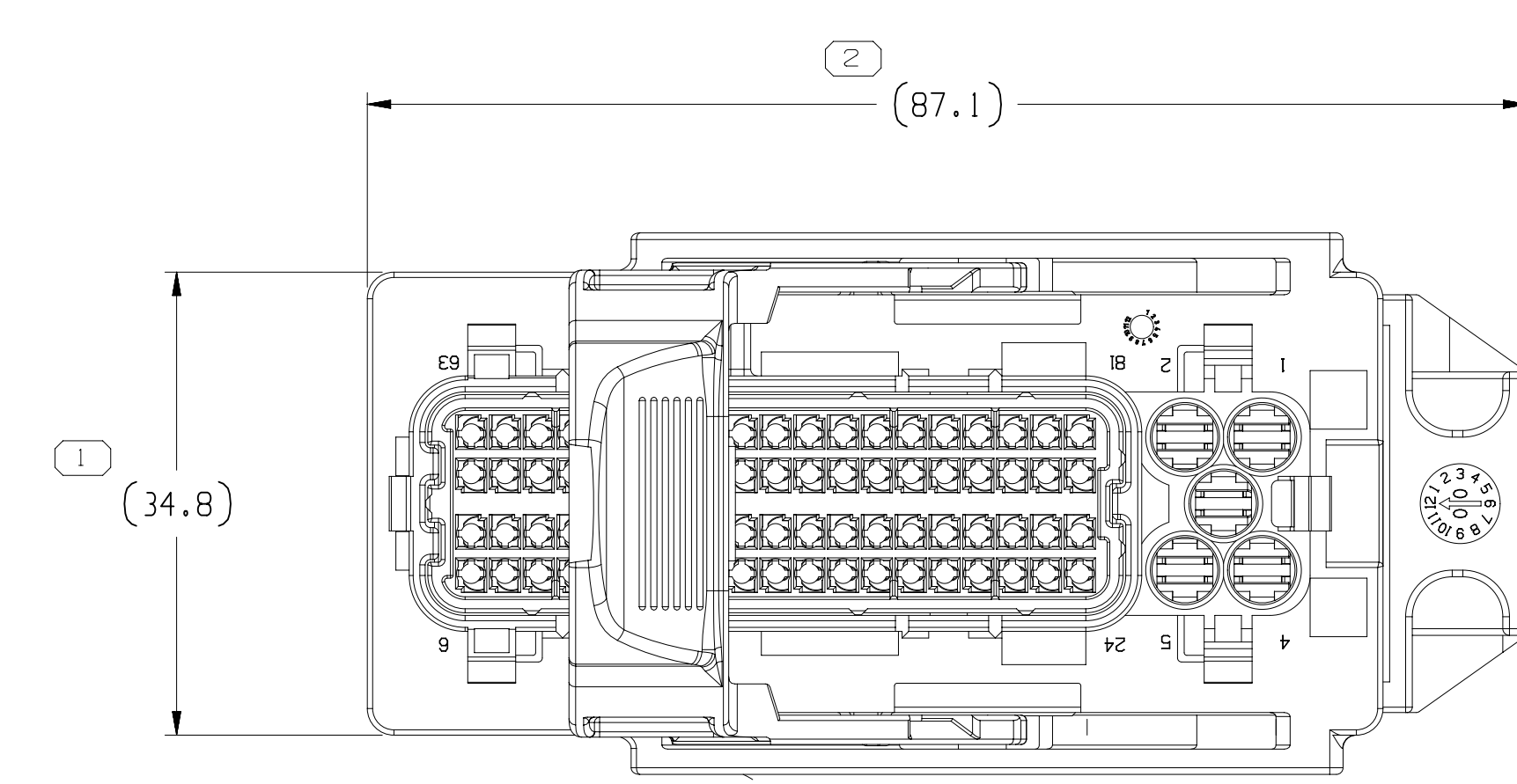
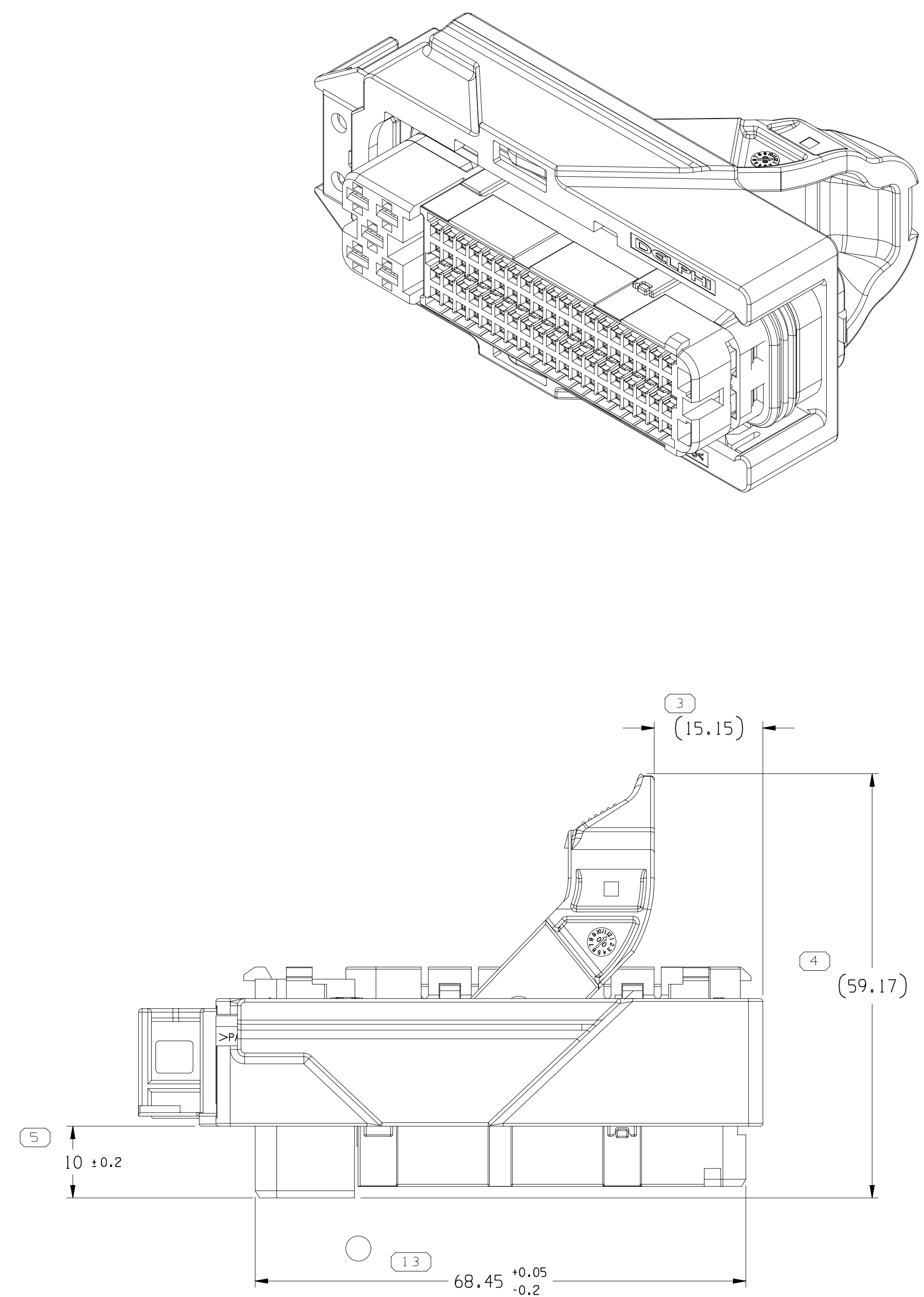


REF. EXPLODED ASSEMBLY VIEW



SYMBOL DEFINITION		TOTAL NO OF INSPECTIONS REQUIRED	MISSING SYMBOLS
A DIMENSION WITHOUT AN INSPECTION REPORT SYMBOL DOES NOT REQUIRE INSPECTION. IT MAY BE CONTROLLED ON THE INDIVIDUAL COMPONENT DRAWING.		13	NO MISSING SYMBOL NUMBER
		13	

DWG STATUS		ZONE		REVISION HISTORY		AUTH	DR	APVD	APVD
DATE	STG	REV	N/P	CHG					
300C13	R	01	-	-	RELEASED PART DRAWING	424475	JZ	JC	SBH
01SE15	R	01	AA	-	ADD DIMENSION #13.	430652	JY	WGJ	HJJ
12.N1B	R	02	-	-	MATERIAL MARK WAS PBT-GF20	440914	ZML	HZ	SBH

NOTES

- UNLESS OTHERWISE SPECIFIED AND/OR INDICATED:
DIMENSIONS ARE TO FACE OF VIEW SHOWN AND AUTOMATICALLY ROUNDED BY COMPUTER FOR INSPECTION (SEE MATH MODEL FOR PRECISE DIMENSIONS). FOR ALL OTHER DIMENSIONS NOT SHOWN BUT REQUIRED FOR TOOL BUILD, SEE MATH MODEL FOR PRECISE TOOL PATH DATA.
- THIS PRODUCT IS NOT CATEGORIZED AS AN APPEARANCE ITEM, MINOR IMPERFECTIONS INCLUDING, BUT NOT LIMITED TO, FLOW MARKS, COLOR BLEMISHES, GATE VESTIGE, AND SOFT FLASH THAT DO NOT AFFECT THE FIT, FORM, OR FUNCTION OF THE PART ARE PERMISSIBLE.
- ASM ACCEPT COVER P/N: 13712208.
ASM ACCEPT SECONDARY LOCK P/N: 13712214.
- CAVITY TERMINAL INFORMATION:
TERM ATS 280 FOR CAVITIES 1 TO 5
TERM MTS-B 0.64 FOR CAVITIES 6 TO 81

MTS-B 0.64	15426818	0.75 50	0.75 50	-	1.2-1.9 mm	15489185
	15426816	0.35-0.5 50	0.3-0.5 50	-	1.2-1.9 mm	
ATS 280	15344660	1.5-2.5 50	2.0 50	15327859	2.7-2.9 mm	15337197
	15344661	0.75-1.0 50	0.75-1.25 50	15327863	2.0-2.7 mm	
	15344659	0.35-0.5 50	0.3-0.5 50	15327860	1.2-2.0 mm	
TERMINAL	DELPHI P/N	DIN CABLES	JASO CABLES	WIRE SEAL	CABLE OD	CAVITY PLUG

5. MATERIAL OF TERMINAL:		
MTS-B 0.64	CuNi35Ti10g	F.Sn3
ATS 280	CuNi35Ti10g	F.Sn3
TERMINAL	MATERIAL OF TERMINAL BODY	SURFACE TREATMENT

6. MATERIAL OF COMPONENT:

ASM P/N	COMPONENT P/N	DESCRIPTION	MATERIAL SPECIFICATION AND COLOR
33124884	33108022	CONNECTOR	POLYESTER BLEND BLK
	33122339	CABLE SEAL	SILICONE NATURAL
	13712210	CONN SEAL	SILICONE RUST RED
	13712209*	STRAIN RELIEF	POLYESTER BLEND GRN
	13712213	NOSE PIECE	POLYAMIDE BLEND GRN
	13712212	TPA	POLYESTER BLEND YEL
	13712211	SLIDE LEVER	POLYAMIDE BLEND BLK
13716551	LEVER	POLYAMIDE BLEND BLK	

* STRAIN RELIEF CAVITIES ARE ALL OPEN FOR THIS ASM PART.

7. FOR APPLICATION DATA SEE THE APPLICATION DRAWING.

DIMENSIONAL RANGE (MM)	TOLERANCE	CHART
FROM > 0	> 6	> 30
> 6	> 30	> 70
> 30	> 70	> 120
> 70	> 120	> 160
> 120	> 160	> 200
> 160	> 200	> 250
> 200	> 250	> 315
> 250	> 315	> 400

UNLESS OTHERWISE SPECIFIED
THIS DOCUMENT IS IN ACCORDANCE WITH ASME Y14.5M-1994 AS MODIFIED BY THE 2003 GLOBAL DIMENSIONING AND FITTING PRACTICES ADDENDUM-2003. SEPARATE PATTERNING OF FEATURES MAY BE ORDERED SEPARATELY REGARDLESS OF DATUM REFERENCES.

ALL DIMENSIONS ARE IN MILLIMETERS

THIRD ANGLE PROJECTION

DO NOT SCALE USE MATH DATA

NX

APTIV
CONNECTION SYSTEMS
Anqing, China
COPYRIGHT 2013 APTIV. ALL RIGHTS RESERVED.
THIS DRAWING IS THE PROPERTY OF APTIV AND CONTAINS APTIV CONFIDENTIAL INFORMATION. THE REPRODUCTION, DISTRIBUTION AND UTILIZATION OF THIS DOCUMENT OR ITS RELATED CAD DATA, AS WELL AS COMMUNICATION OF ANY CONTENT TO OTHERS, WITHOUT EXPRESS AUTHORIZATION, IS PROHIBITED.

DR	DATE
APVD1 JOYES ZHENG	300C13
APVD2 JUN CUI	300C13
APVD3 SUIBIN HUANG	300C13
APVD4	
APVD5	

SUBSTANCES OF CONCERN AND RECYCLED CONTENT PER APTIV 10949001

MATERIAL SEC CHART

DRAWING NAME
ASM CONN 81 F MTS-B 0.64 SLD MODULAR

DRAWING NUMBER
33124884

SIZE A0
SCALE 2:1
FRAME NO 1
SHEET NO 1 OF 1
STG REV TYP
R 02

Sheet: C:\P\33124884.dwg Date: 2015-05-22 10:22:22 User: JZ Time: 1:31:26-148