

DWG STATUS				ZONE		REVISION HISTORY		AUTH	DR	APVD	APVD
DATE	BY	REV	CHK			NO	DESCRIPTION				
17AP18	R	01	-	-			INITIAL RELEASE			A.GUN	D.BUR

KEYING B
M 2:1

KEYING C
M 2:1

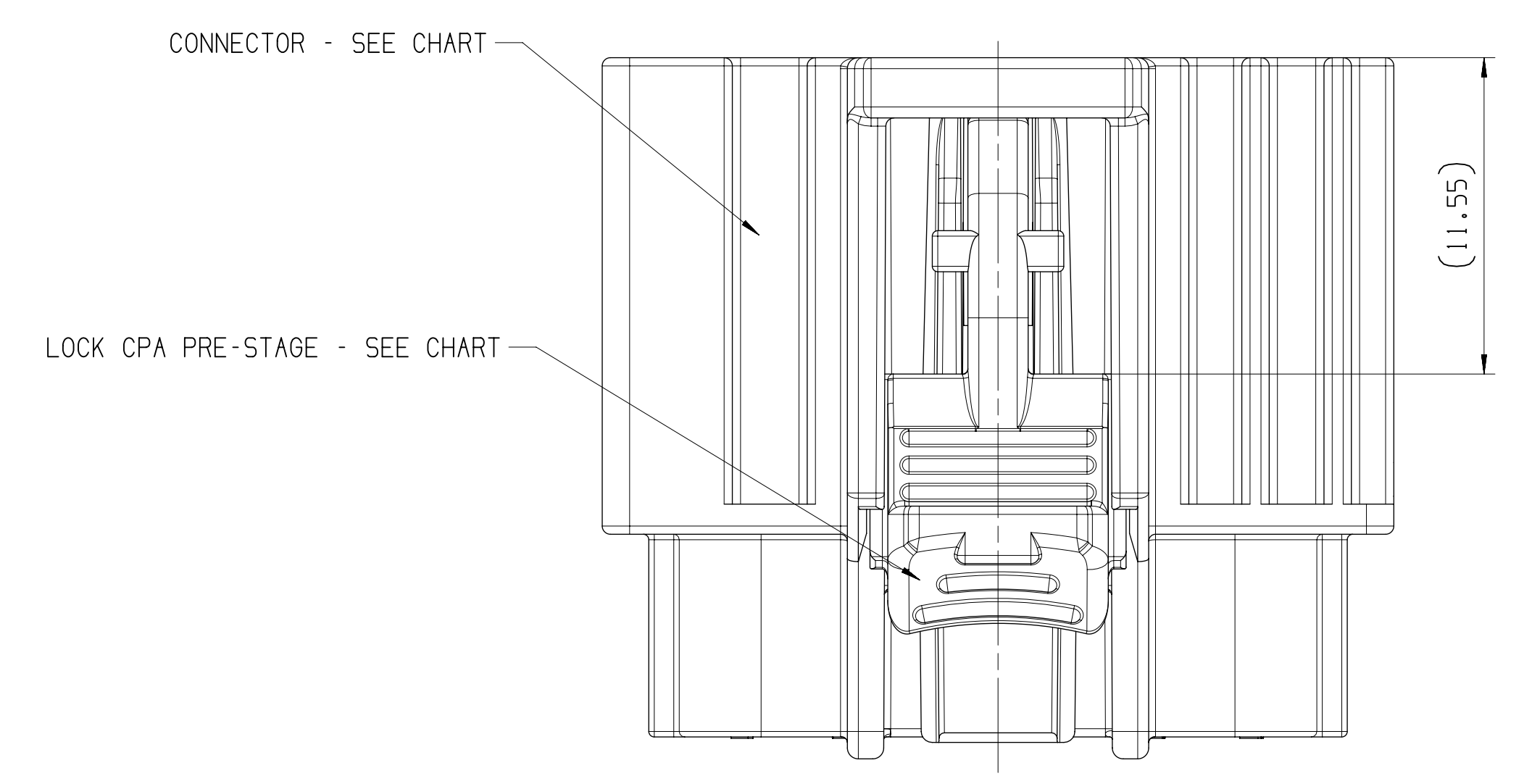
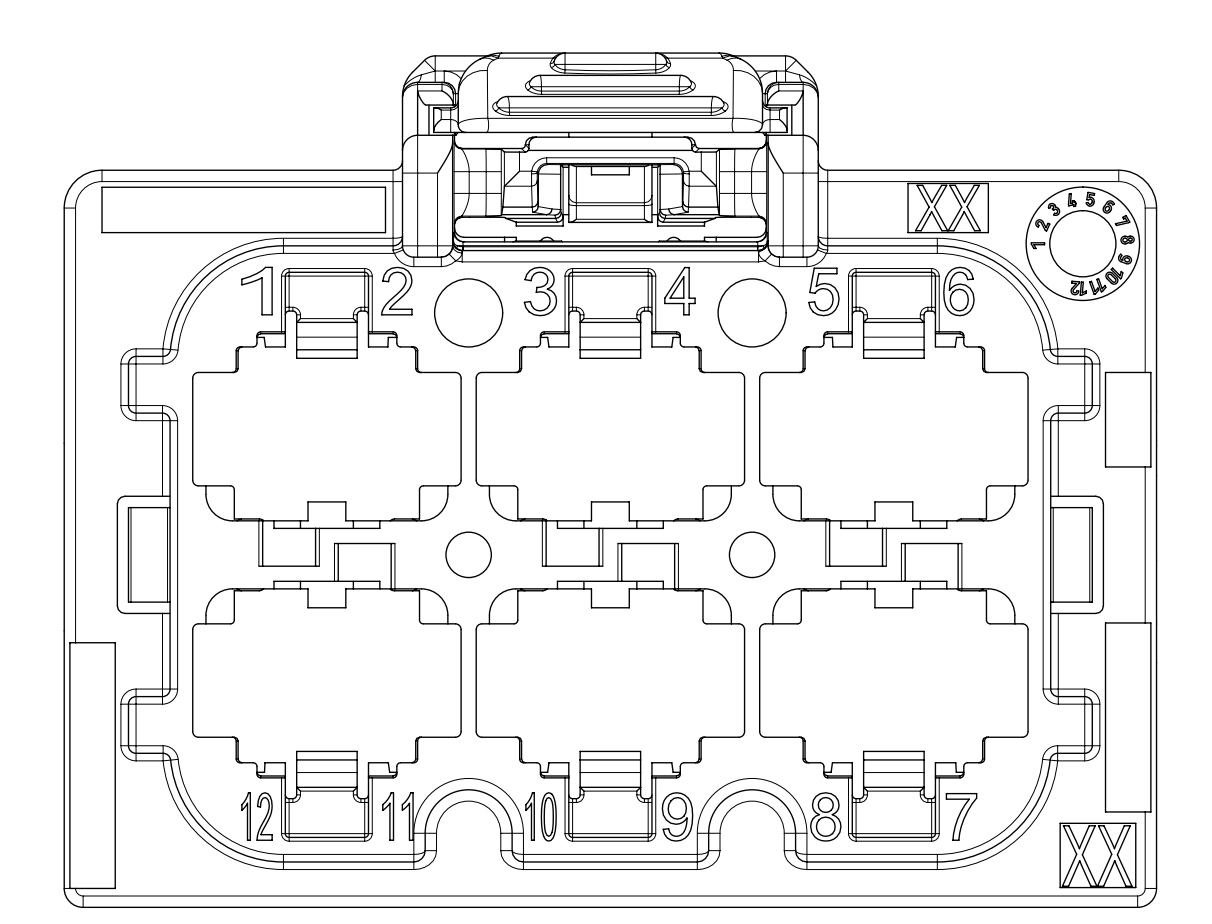
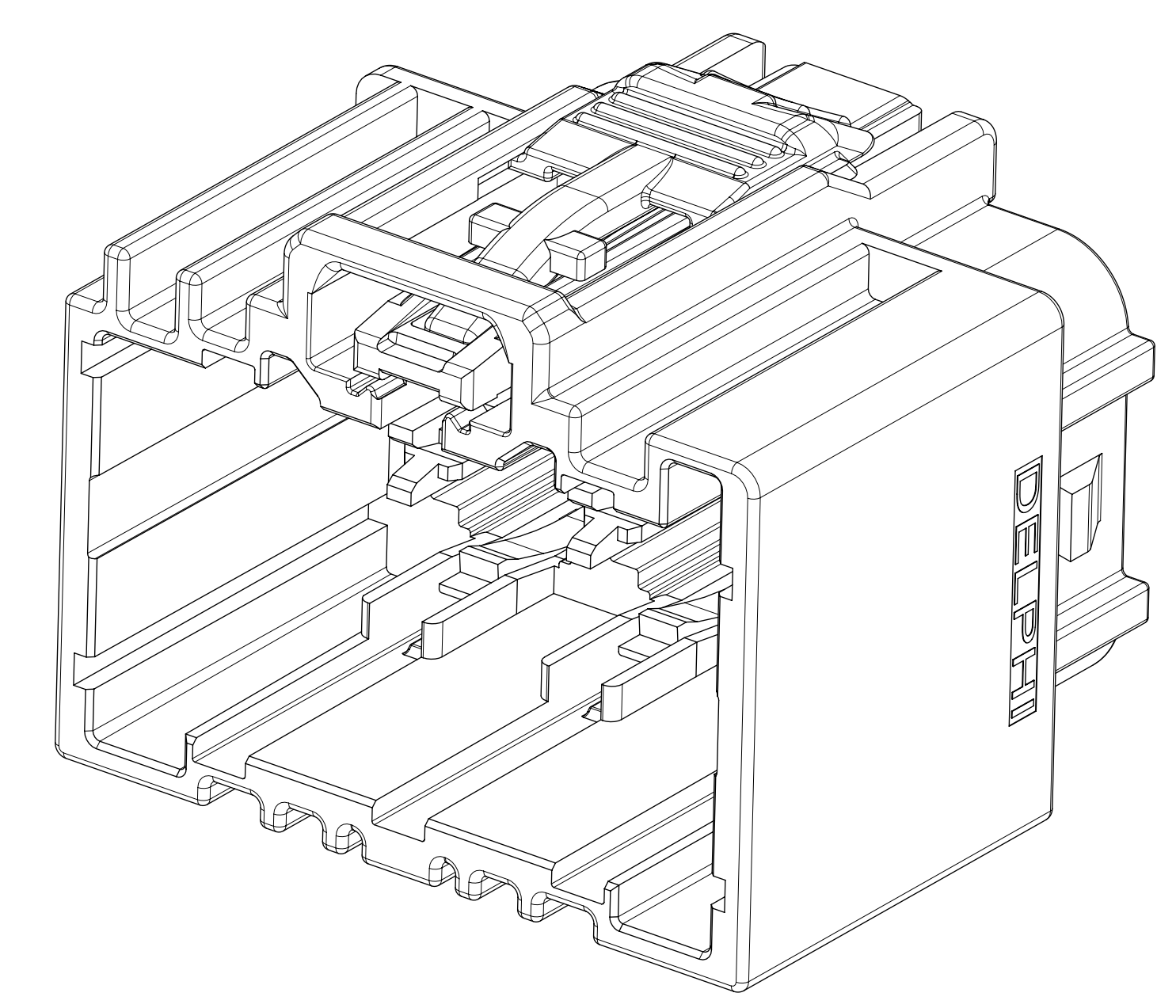
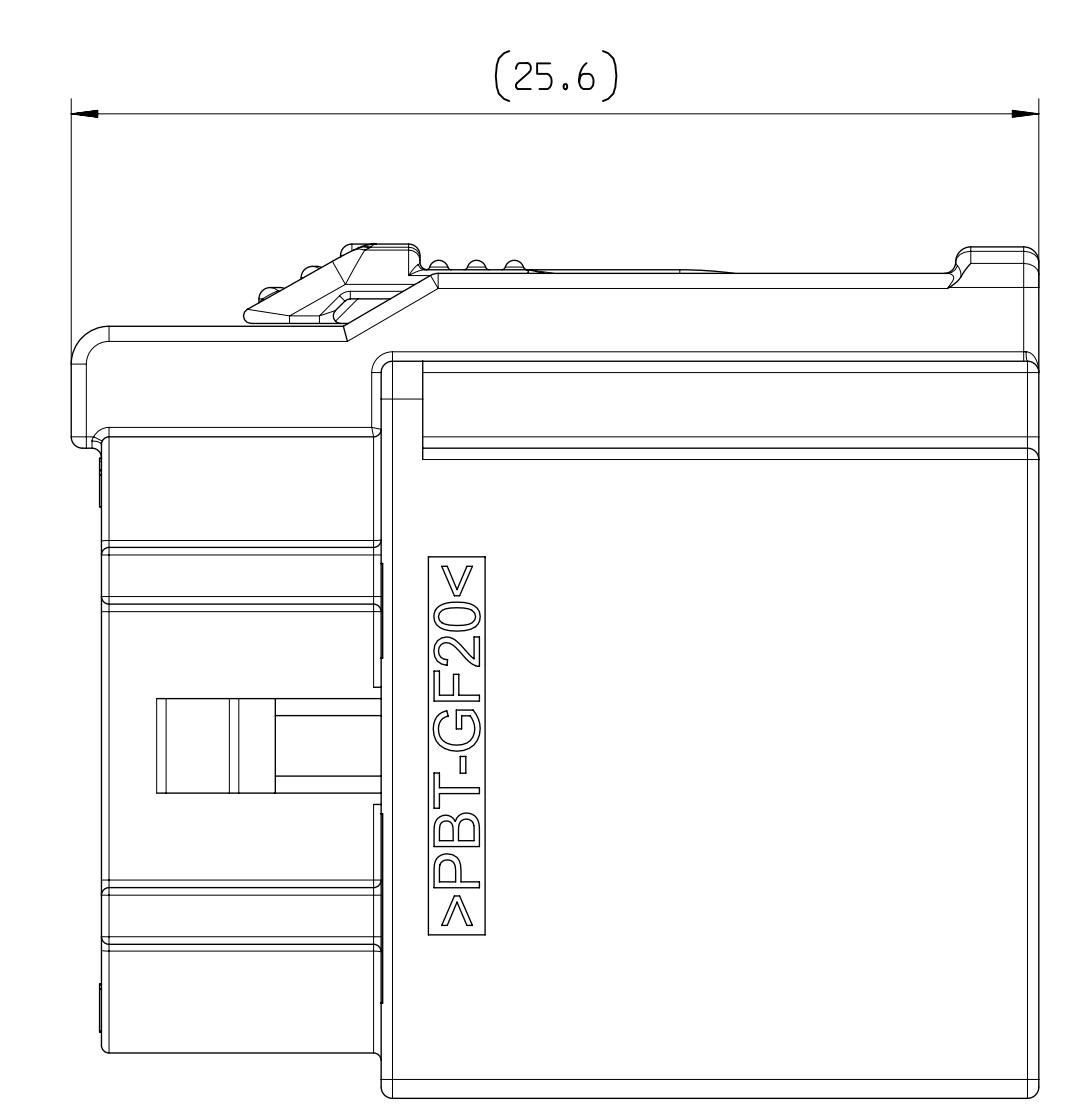
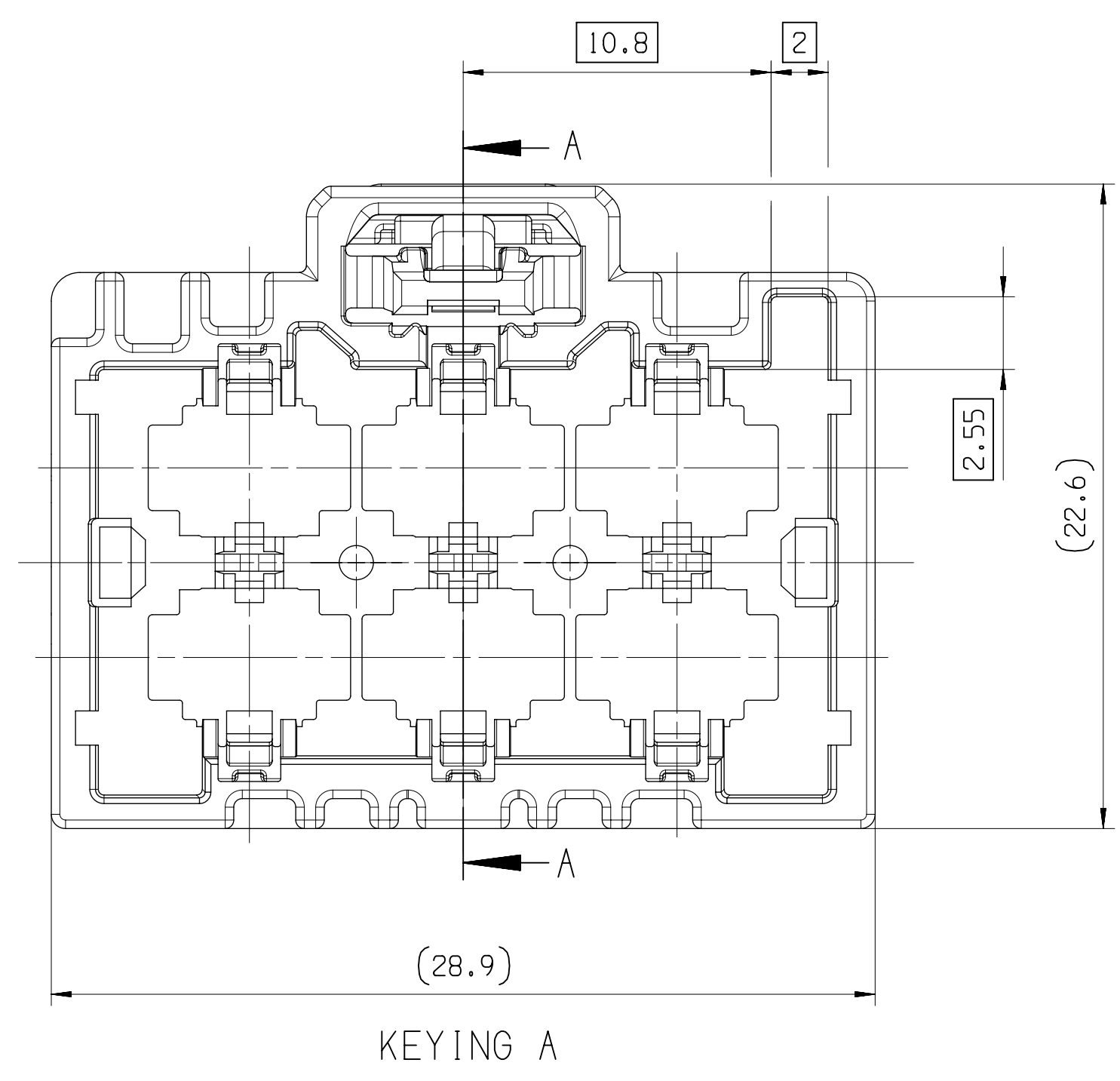
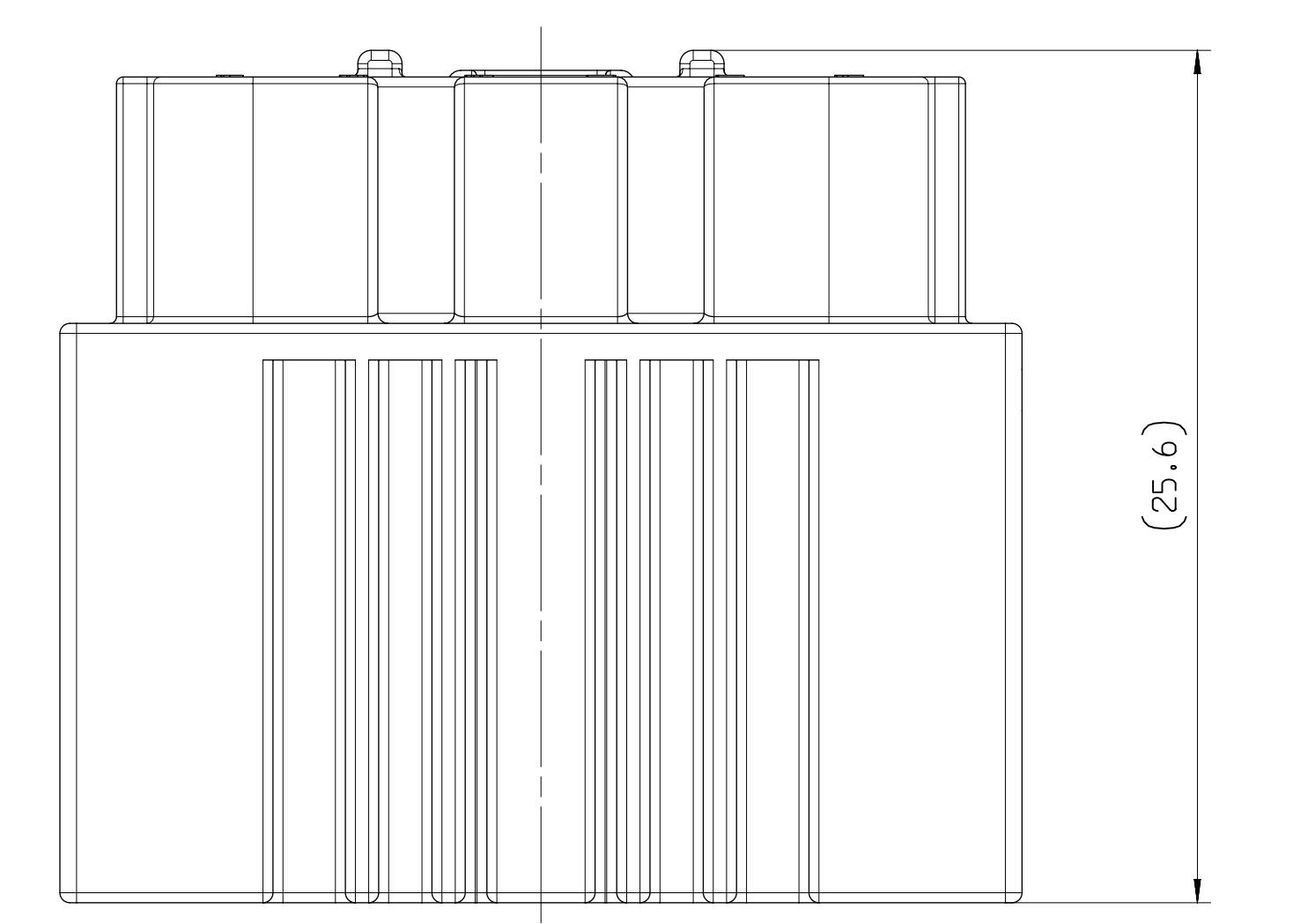
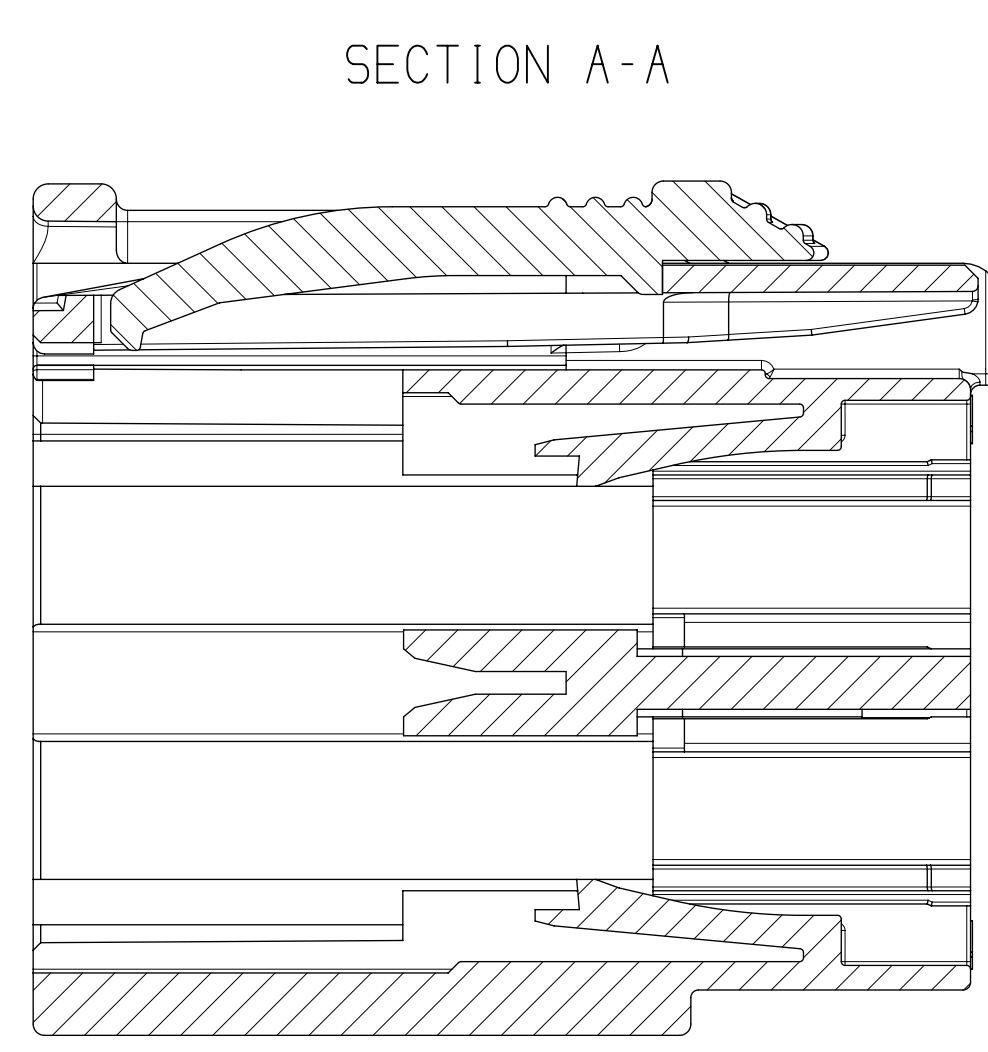
KEYING D
M 2:1

KEYING E
M 2:1

KEYING F
M 2:1

KEYING G
M 2:1

KEYING H
M 2:1



- NOTES
- UNLESS OTHERWISE SPECIFIED AND/OR INDICATED:
DIMENSIONS ARE TO FACE OF VIEW SHOWN AND AUTOMATICALLY ROUNDED BY COMPUTER FOR INSPECTION (SEE MATH MODEL FOR PRECISE DIMENSIONS). FOR ALL OTHER DIMENSIONS NOT SHOWN BUT REQUIRED FOR TOOL BUILD, SEE MATH MODEL FOR PRECISE TOOL PATH DATA.
 - FOR APPLICATION DATA SEE THE INDIVIDUAL APPLICATION DRAWINGS.
 - (1.01X(0.1)) DELPHI CORPORATE BRAND TO BE LOCATED ON ANY EXTERIOR SURFACE, PREFERABLY VISIBLE AT FINAL ASSEMBLY. OPTIONAL CONSTRUCTION FOR EXISTING TOOLING MAY BE "FED" OR NO LOGO.

PART NO	REV	N/P	TYPE	CODE	CONNECTOR	LOCK CPA
35143300	01	-	-	H	35143148	33224253
35143292	01	-	-	G	35143145	33224253
35143318	01	-	-	F	35143138	33224253
35143291	01	-	-	E	35143136	33224253
35143302	01	-	-	D	35143084	33224253
35143298	01	-	-	C	35143147	33224253
35143299	01	-	-	B	35129617	33224253
35143301	01	-	-	A	35129616	33224253

○ DIM TO CHECK
⊖ DIM FOR HELP
□ THEORETIC DIM

LINE DRAWN THROUGH A PART NUMBER INDICATES THAT PHYSICAL PARTS ARE NOT AVAILABLE FOR ORDERING.
PART NUMBERS THAT DO NOT HAVE A LINE PRESENT INDICATE THAT PHYSICAL PARTS ARE AVAILABLE FOR ORDERING.
CONTACT APTIV SALES TO ASSURE AVAILABILITY OF PARTS.

SHARP CORNER TOLERANCE
FROM 0 > 20 > 30 > 70 > 100
TO 20 30 70 100
TOLERANCE UNLESS OTHERWISE SPECIFIED
±0.15 | ±0.2 | ±0.3 | ±0.4 | ±0.5
ANGULAR TOLERANCE ±2°

R 0.2 MAX
R 0.1 MAX

DO NOT SCALE
USE MATH DATA

PART DRAWING

VOLUME (CM)

ROUTING

UNLESS OTHERWISE SPECIFIED

GENERAL TOLERANCES ACCORDING TO: SEE CHART

GD&T ACCORDING TO:

REFERENCE

FIRST ANGLE PROJECTION

DO NOT SCALE
USE MATH DATA

• APTIV •
DELPHI PACKARD ELECTRICAL/ELECTRONIC ARCHITECTURE
Chennai, India

DELPHI CORPORATION AND/OR ITS AFFILIATES. ALL RIGHTS RESERVED.

THIS DRAWING IS THE PROPERTY OF DELPHI CORPORATION AND CONTAINS DELPHI CONFIDENTIAL INFORMATION. THE REPRODUCTION, DISTRIBUTION AND UTILIZATION OF THIS DOCUMENT OR ITS RELATED CAD DATA, AS WELL AS COMMUNICATION OF ANY CONTENT TO OTHERS, WITHOUT EXPRESS AUTHORIZATION, IS PROHIBITED.

DESE ZEICHNUNG IST EIGENTUM DER FIRMA DELPHI UND ENTHÄLT DELPHI VERTRAULICHE INFORMATIONEN. DIE REPRODUKTION, VERTEILUNG UND NUTZUNG DESSES DOKUMENTS ODER SEINER ZUSAMMENHÄNGENDE CAD-DATEN ODER AUCH ALS KOMMUNIKATION VON BELEGENEN INHALT ZU ANDEREN, IST OHNE BERECHTIGUNGSGRÜNDUNG DURCH DIE DELPHI-KORPORATION UNTERSAGT.

DR	DATE
ARAVINDAN G	17AP18
BUROW DIETER	17AP18

MATERIAL

SEE CHART

DRAWING NAME

6PORT 2ROW COLLECTOR ASSEMBLY WITH CPA

DRAWING NUMBER

35183729

SIZE A0 SCALE 5:1 FRAME NO 1 SHEET NO 1 OF 1