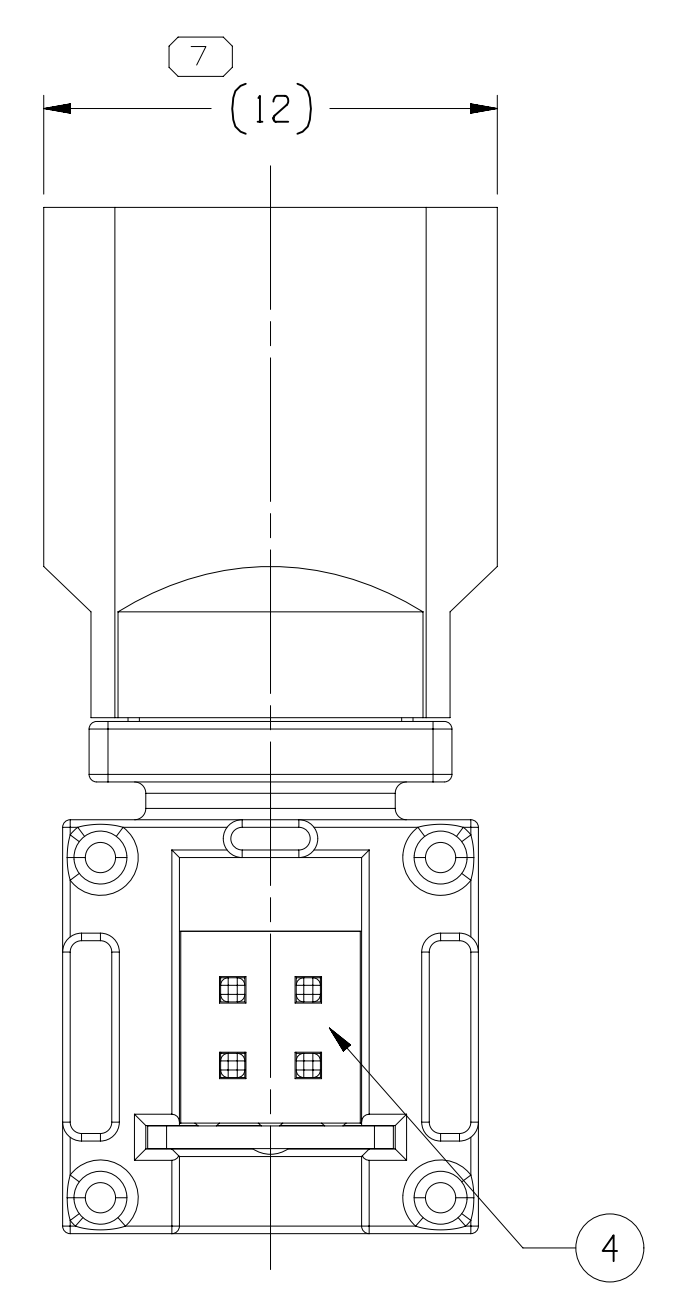
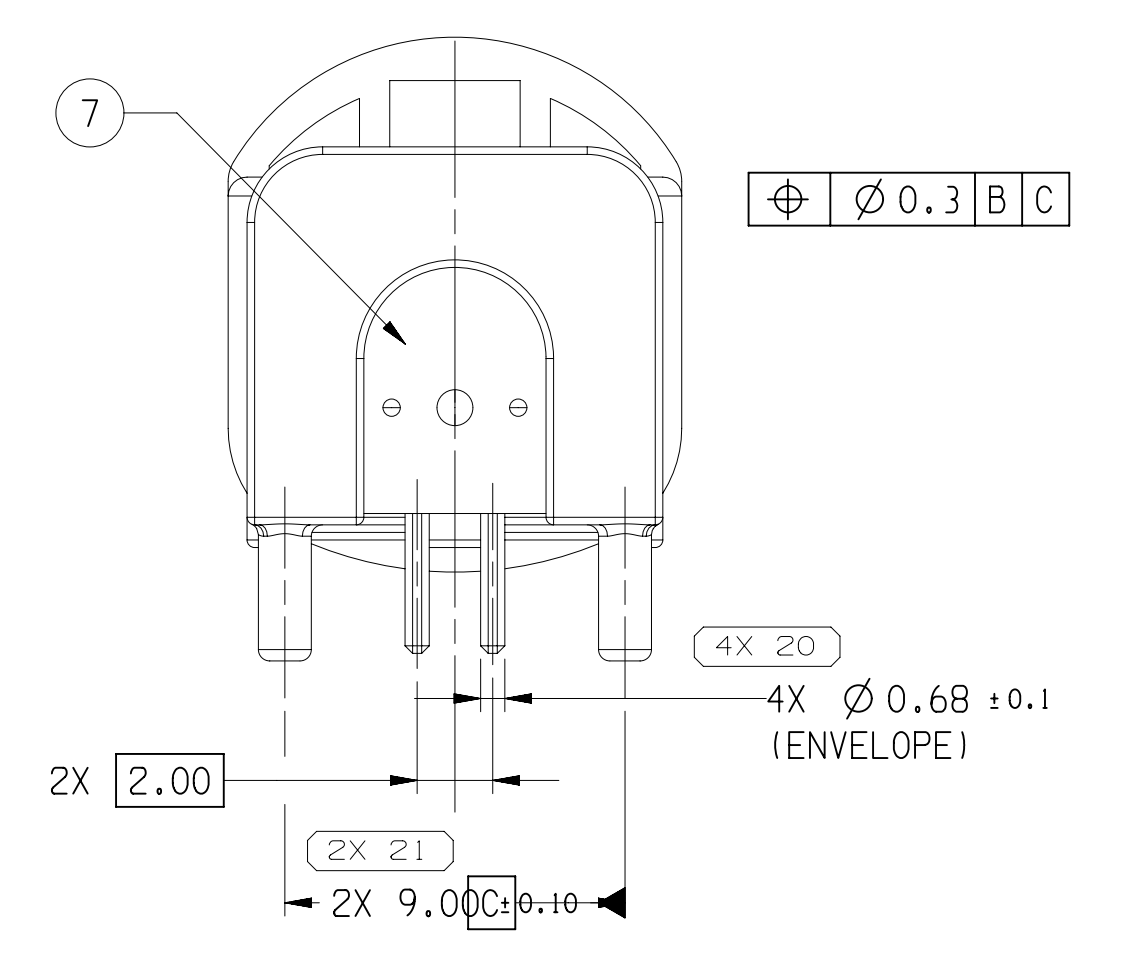
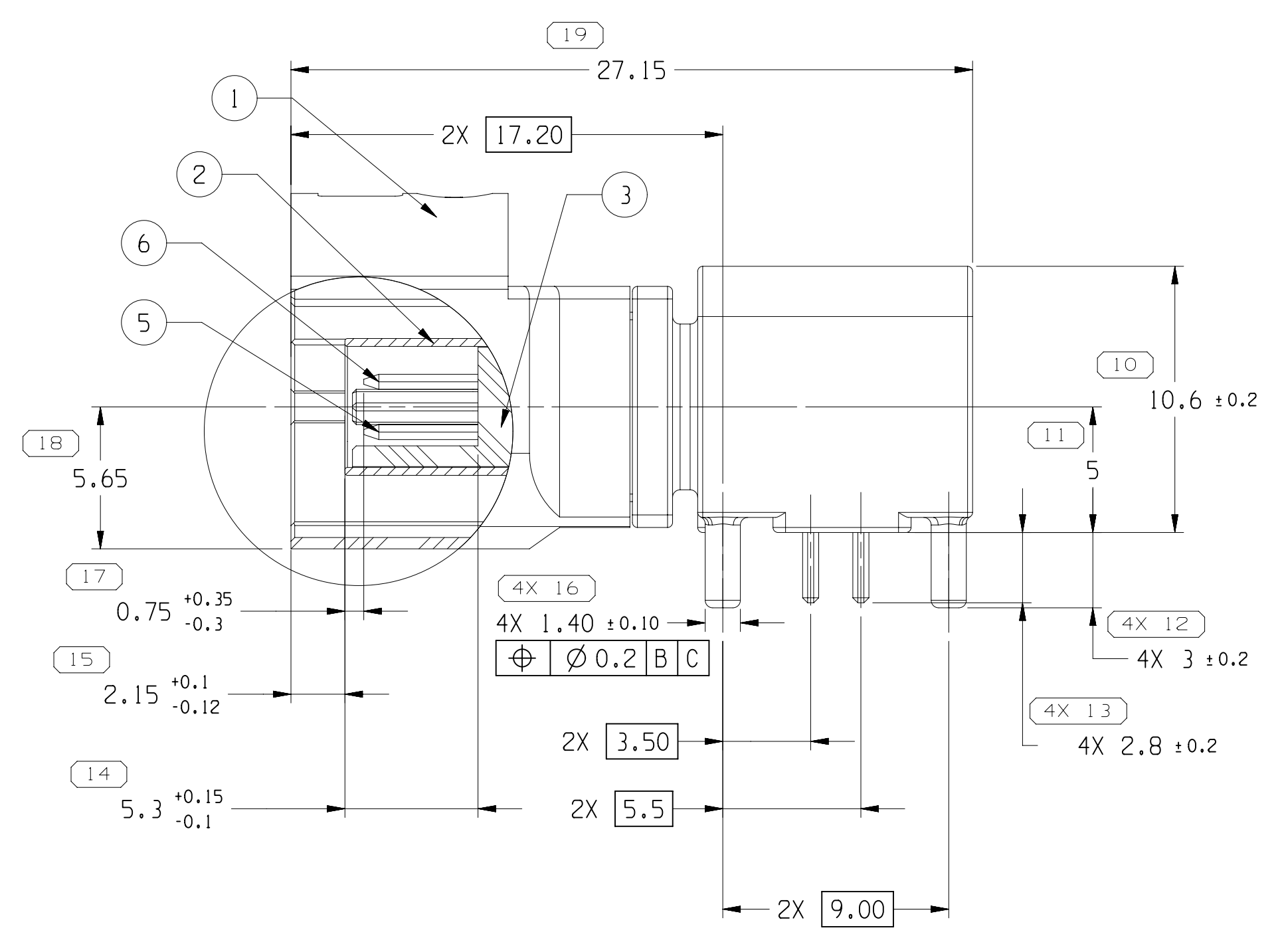
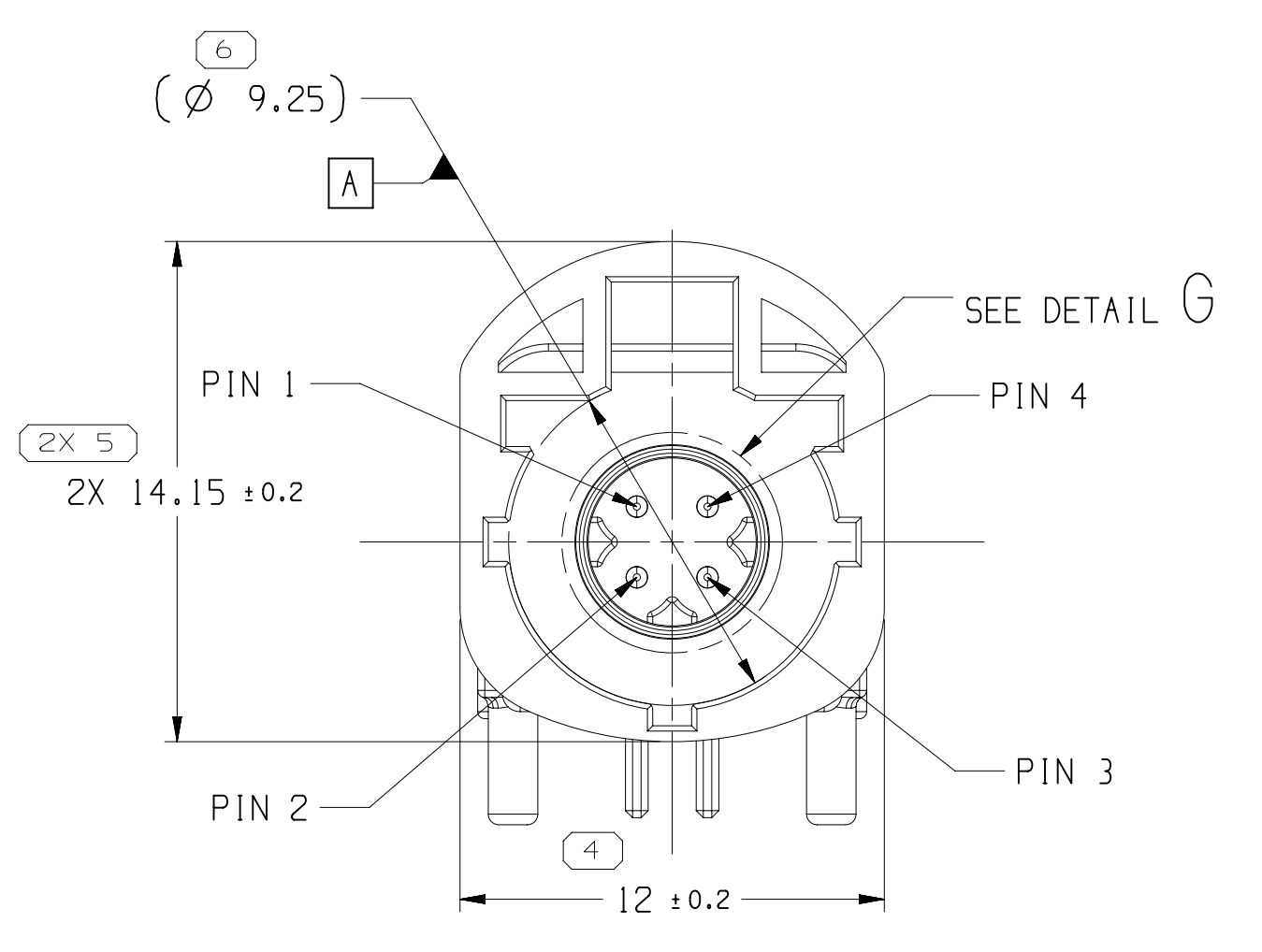
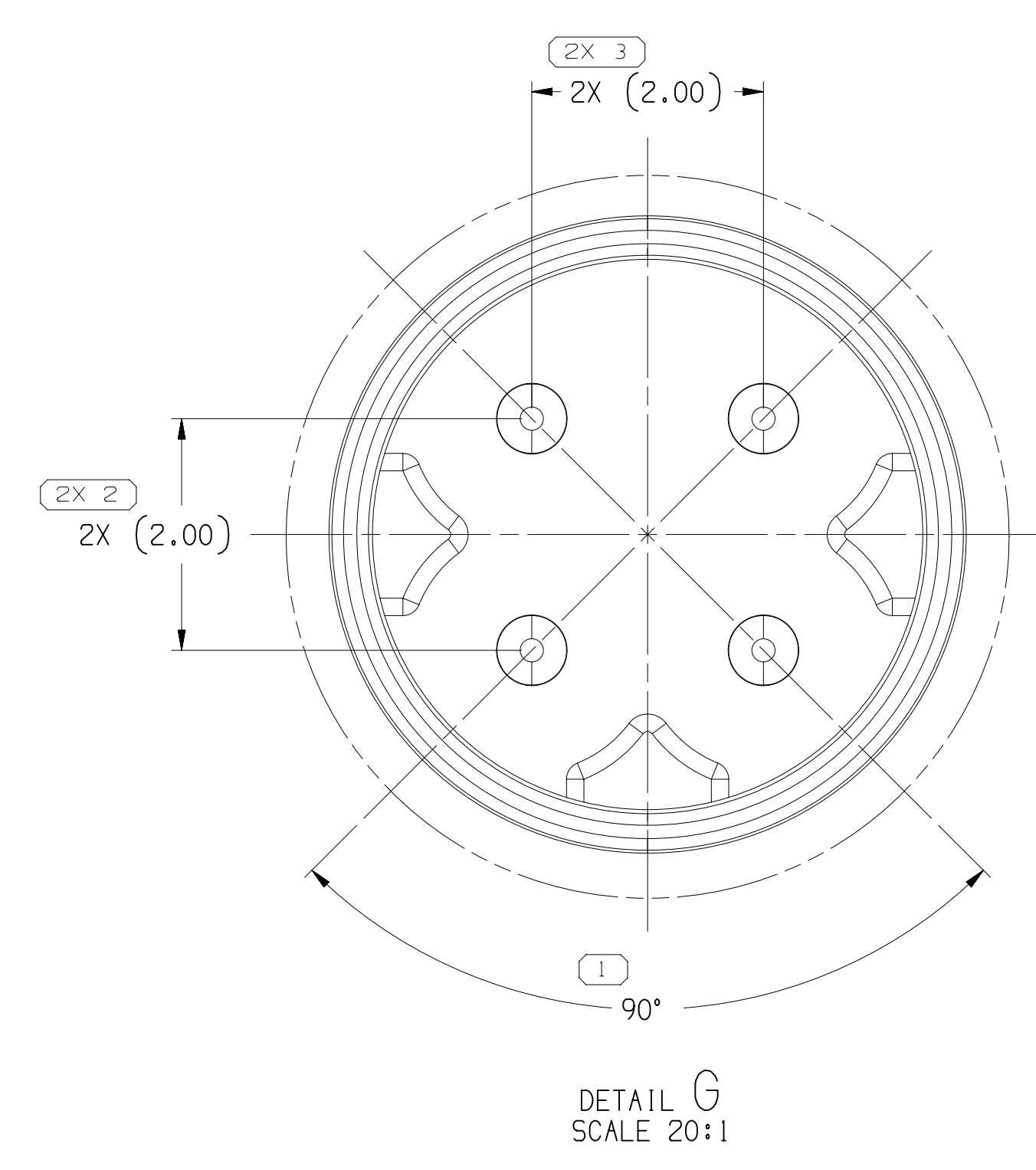
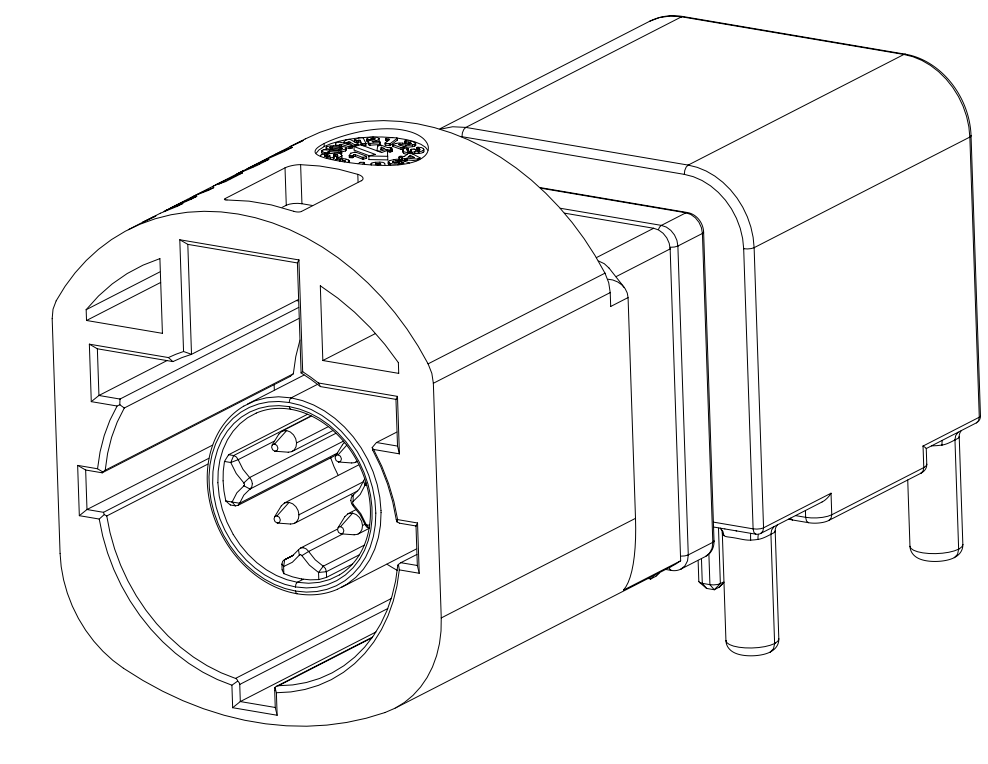
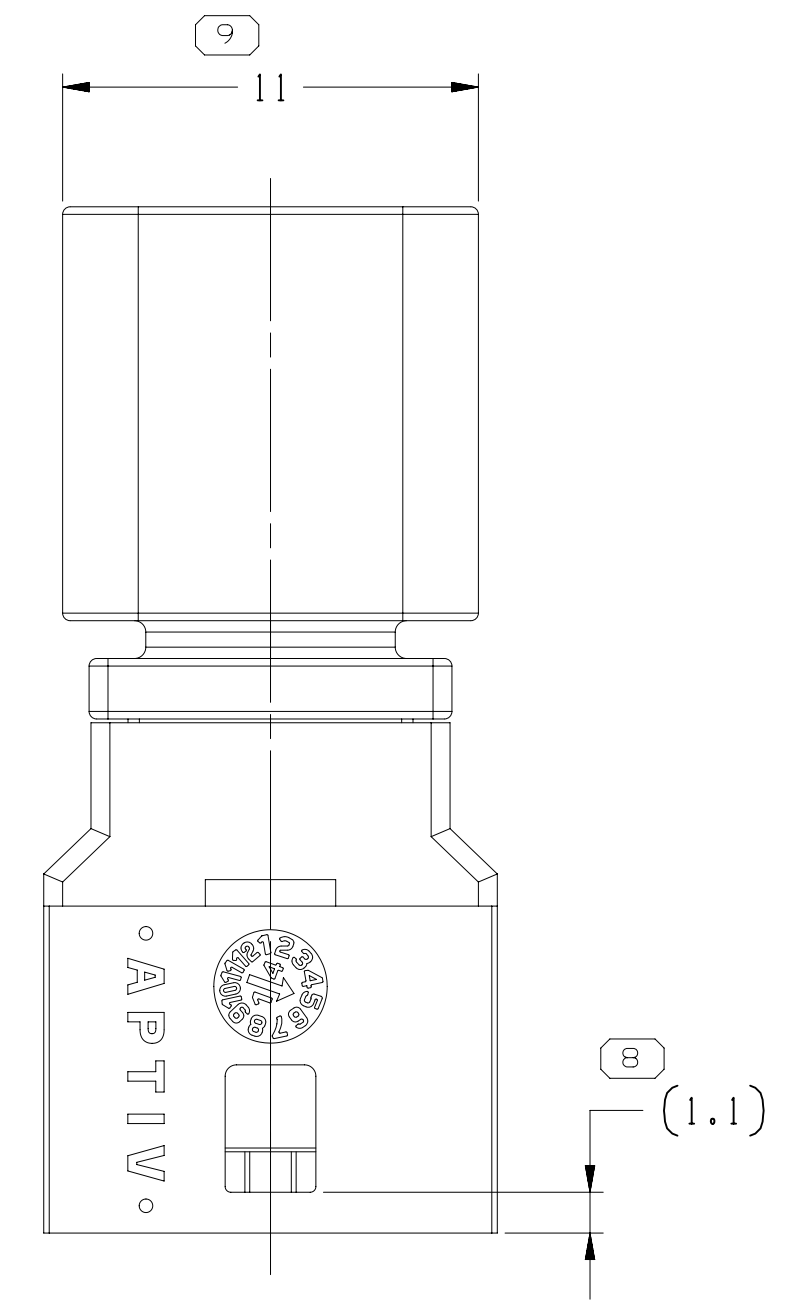
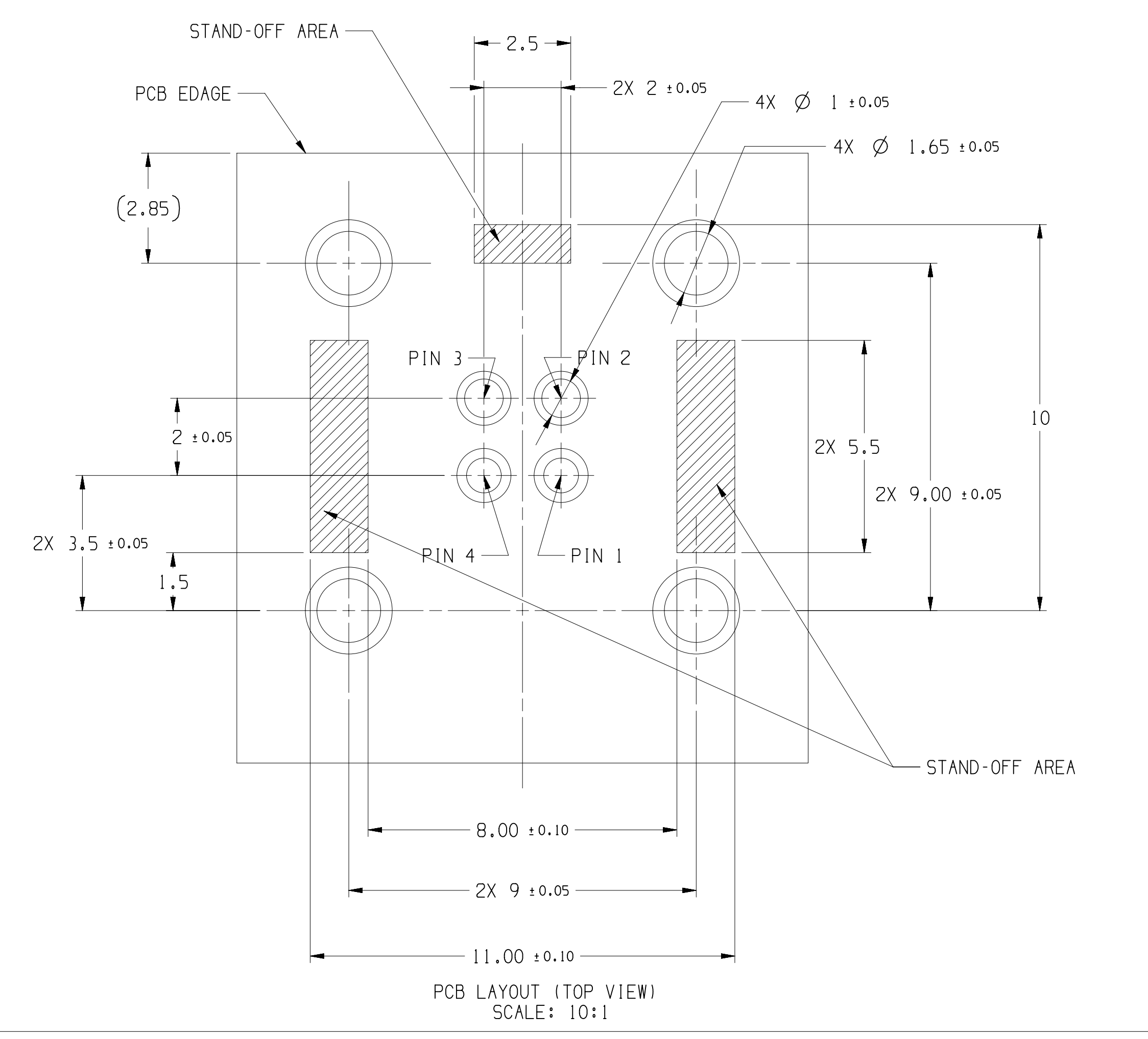


ITEM	PART NAME	MATERIAL	PLATING/COLOR
7	BACK SHIELD	SUS	NI 1μm MIN
6	UPPER TERMINAL	BRASS	NI PLATED BOTTOM 2μm MIN, CONTACT GOLD PLATED 0.375μm, SOLDERING AREA MATTE TIN PLATED 2.5-3.75μm
5	LOWER TERMINAL	BRASS	NI PLATED BOTTOM 2μm MIN, CONTACT GOLD PLATED 0.375μm, SOLDERING AREA MATTE TIN PLATED 2.5-3.75μm
4	BACK INSULATOR	LCP	BLACK
3	INSULATOR	LCP	BLACK
2	SHIELD	ZINC	Cu 10-15μm, NI 2.5μm MIN, MATTE SN 2.5- 3.75μm
1	HOUSING	PA	SEE TABLE

SYMBOL DEFINITION		MISSING SYMBOLS	
A	DIMENSION WITHOUT AN INSPECTION REPORT SYMBOL DOES NOT REQUIRE INSPECTION. IT MAY BE CONTROLLED ON THE INDIVIDUAL COMPONENT DRAWING.	NO MISSING SYMBOL NUMBER	
		TOTAL NO OF INSPECTIONS REQUIRED	37
		LAST NO. USED	21

DATE	STG	REV	N/P	CHG	ZONE	REVISION HISTORY	AUTH	DR	AP/VD
27AU22	R	01	-	-		CREATED PART DRAWING	447872	DYE	JYQ
30NO22	R	02	-	-		REVISED DIMENSIONS	448673	WZD	JYQ
05JL23	R	03	-	-		REVISED DIMENSIONS	449432	ZJ	JYQ



PART NUMBER	KEY CODE	KEY SHAPE	OUT HOUSING COLOR
35602360	A		JET BLACK
35602361	B		CREAM WHITE
35602362	C		SIGNAL BLUE
35602363	D		CLARET VIOLET
35602364	E		LEAF GREEN
35602365	F		NUT BROWN
35602366	Z		WATER BLUE

- NOTES
- UNLESS OTHERWISE SPECIFIED AND/OR INDICATED:
    - DIMENSIONS ARE TO FACE OF VIEW SHOWN AND AUTOMATICALLY ROUNDED BY COMPUTER FOR INSPECTION (SEE MATH MODEL FOR PRECISE DIMENSIONS). FOR ALL OTHER DIMENSIONS NOT SHOWN BUT REQUIRED FOR TOOL BUILD, SEE MATH MODEL FOR PRECISE TOOL PATH DATAMATERIALS
  - ELECTRICAL SPECIFICATION:
    - IMPEDANCE: 100Ω
    - FREQUENCY RANGE: DC TO 2 GHz
    - RETURN LOSS: 20 DB MIN. (DC TO 1 GHz) 17 DB MIN (DC TO 2 GHz)
    - INSERTION LOSS: -0.1 DB MAX. (DC TO 1 GHz)
    - SIGNAL CONTACT RESISTANCE: 10 mΩ
    - OUTER CONTACT RESISTANCE: 7.5 mΩ
    - TEST VOLTAGE: 250V rms;
    - WORKING VOLTAGE: 100V rms;
  - MECHANICAL SPECIFICATION:
    - MATING CYCLES: 25 TIMES.
    - RETENTION FORCE LATCH: 110N MIN.
    - INSERTION FORCE: 30N MAX.
  - PARTS SHOWN ON THIS DRAWING USED IN ASM SHOWN ON TAXI CHART.
  - WORKING TEMPERATURE RANGE: -40° C TO +105° C
  - PCB THICKNESS: 1.6mm (REFERENCE).
  - SOLDERING PROCESS: IN WAVE SOLDER OR LEAD-FREE REFLOW SOLDERING PROCESS, MAX SOLDERING TEMPERATURE: +260° C FOR 10 SEC.

DIMENSIONAL RANGE (MM)	TOLERANCE	CHART	LET
FROM > 0	> 20	> 30	> 70
TO	20	30	70
	100	150	200
	250	300	400
	±0.15	±0.2	±0.3
	±0.4	±0.5	±0.6
	±1	±1.2	
	ANGULAR TOLERANCE: ±2°		

LINE DRAWN THROUGH A PART NUMBER INDICATES THAT PHYSICAL PARTS ARE NOT AVAILABLE FOR ORDERING.

PART NUMBERS THAT DO NOT HAVE A LINE PRESENT INDICATE THAT PHYSICAL PARTS ARE AVAILABLE FOR ORDERING.

CONTACT AP/VT SALES TO ASSURE AVAILABILITY.

UNLESS OTHERWISE SPECIFIED THIS DOCUMENT IS IN ACCORDANCE WITH ASME Y14.5M-1994 AS AMENDED BY THE ON GLOBAL DIMENSIONING AND TOLERANCING ADDENDUM (2011). SEPARATE PATTERNS OF FEATURES MAY BE ORDERED SEPARATELY REGARDLESS OF DATUM REFERENCES.

ALL DIMENSIONS ARE IN REFERENCE

PROCESS SENSITIVE DIMENSION (N/A)

THIRD ANGLE PROJECTION

DO NOT SCALE USE MATH DATA

**• APTIV •**

CONNECTION SYSTEMS

Chennai, India

COPYRIGHT 2022 APTIV. ALL RIGHTS RESERVED.

THIS DRAWING IS THE PROPERTY OF APTIV AND CONTAINS APTIV CONFIDENTIAL INFORMATION. THE REPRODUCTION, DISTRIBUTION AND UTILIZATION OF THIS DOCUMENT OR ITS RELATED CAD DATA, AS WELL AS COMMUNICATION OF ANY CONTENTS TO OTHERS, WITHOUT EXPRESS AUTHORIZATION, IS PROHIBITED.

DR	DATE
APV01 DANIEL YE	27AU22
APV02 JING YINGQUAN	27AU22
APV03 GARY GUAN	27AU22
APV04	
APV05	

SUBSTANCES OF CONCERN AND RECYCLED CONTENT PER APTIV 10949001

DRAWING NAME: TAXI CONN 0 M HSD

DRAWING NUMBER: 35602372

SIZE: A0 SCALE: 2:1 FRAME NO: 1 OF 1 SHEET NO: 1 OF 1 STG REV N/P: R 03