

ITEM NO	QTY	DESCRIPTION	MATERIAL
1	1	HOUSING	PA
2	1	CONTACT PIN	BRASS PER ASTM B16, GOLD PLATING (INTERFACE AREA)
3	1	INSULATOR	LCP COLOR: NATURAL
4	1	BODY	ZN #3, CU 10-15µm, NI 2.5-3.75µm, MATTE SN: 2.5-3.75µm

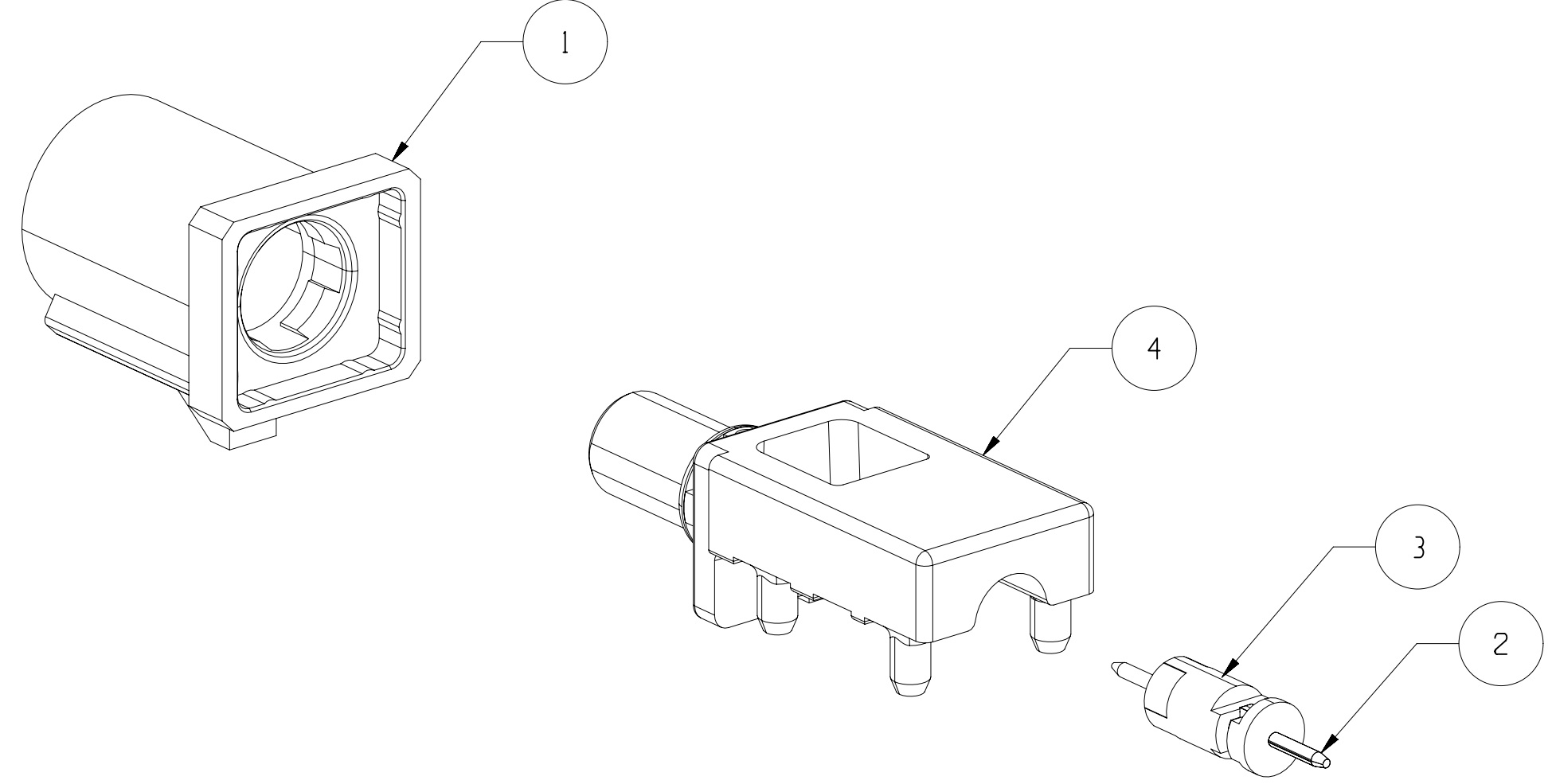
SYMBOL DEFINITION

A DIMENSION WITHOUT AN INSPECTION REPORT SYMBOL DOES NOT REQUIRE INSPECTION. IT MAY BE CONTROLLED ON THE INDIVIDUAL COMPONENT DRAWING.

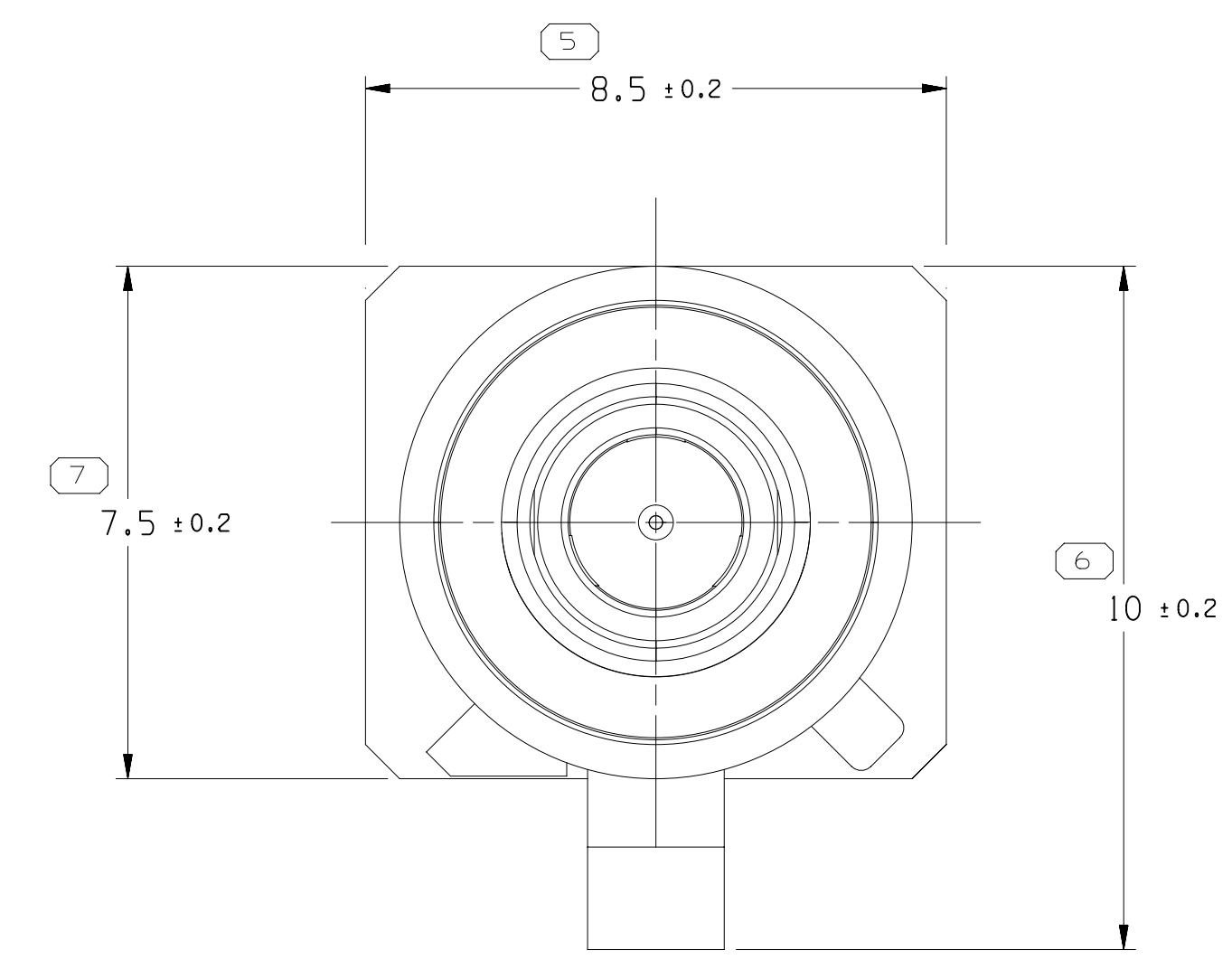
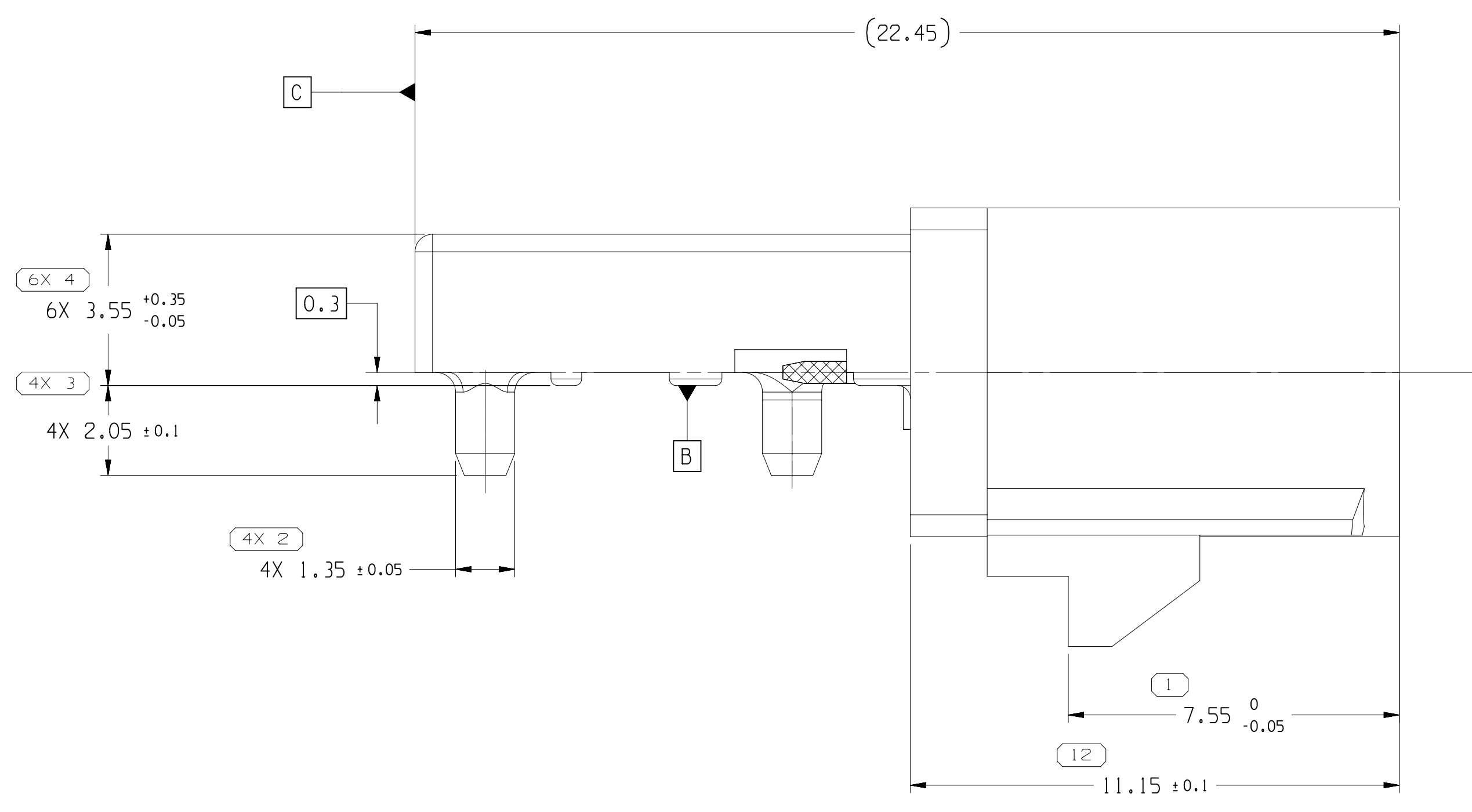
TOTAL NO OF INSPECTIONS REQUIRED: 26

LAST NO. USED: 14

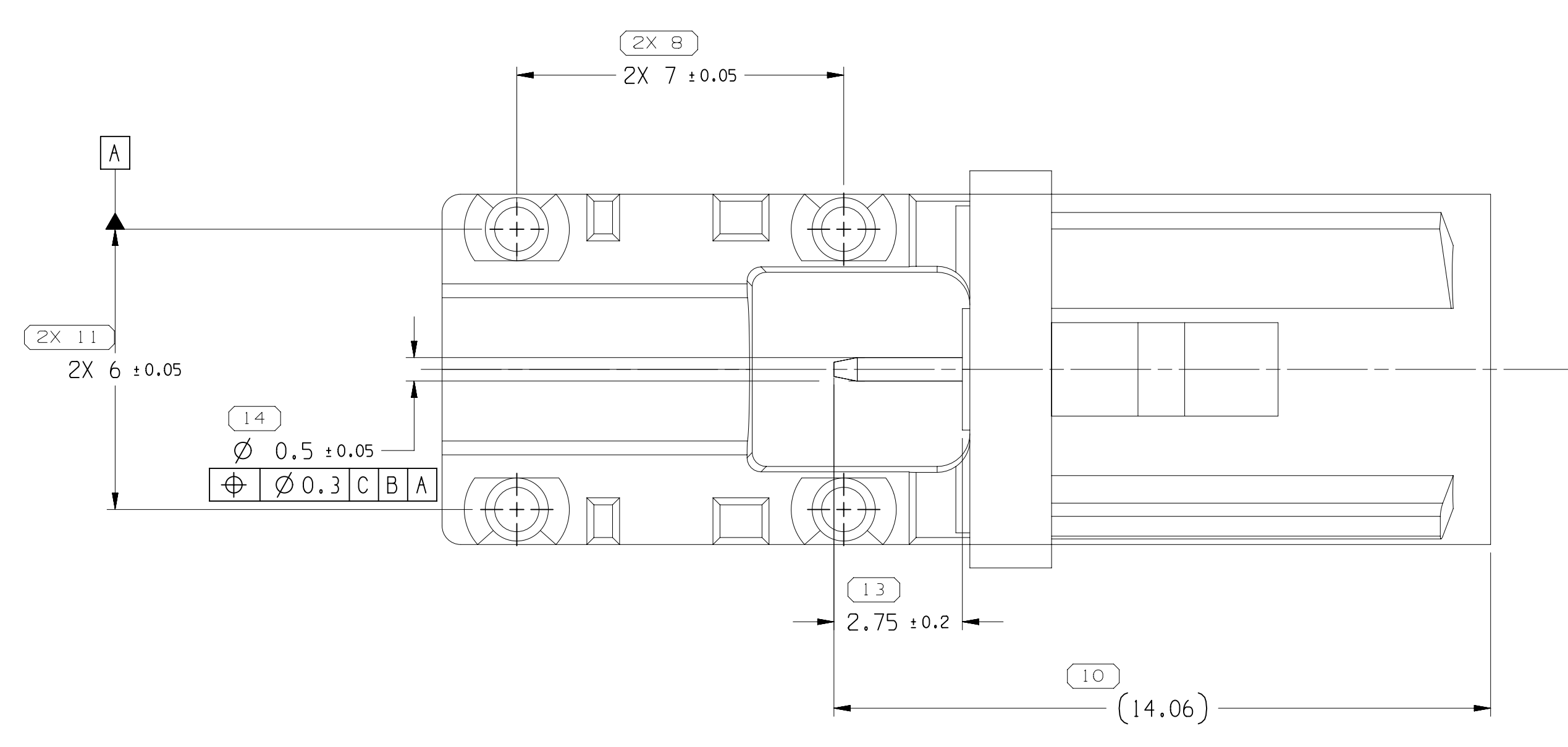
DATE	STG	REV	APP	CHG	ZONE	REVISION HISTORY	AUTH	DR	APVD	APVZ
10NO21	R	01	-	-	-	FIRST RELEASED.	447257	SM	GG	WHM
28JN23	R	02	-	-	-	REVISED DIMENSIONS REVISED NOTES	449438	CL	JZ	YOJ



EXPLODED VIEW
SCALE 5:1



CODE A VIEW



NOTES:

- UNLESS OTHERWISE SPECIFIED AND/OR INDICATED: DIMENSIONS ARE TO FACE OF VIEW SHOWN AND AUTOMATICALLY ROUNDED BY COMPUTER FOR INSPECTION (SEE MATH MODEL FOR PRECISE DIMENSIONS). FOR ALL OTHER DIMENSIONS NOT SHOWN BUT REQUIRED FOR TOOL BUILD, SEE MATH MODEL FOR PRECISE TOOL PATH DATAMATERIALS
- MATERIAL: SEE TABLE
PLATING:
- TERMINALS: GOLD ON CONTACT AREA ;MATTE TIN ON SOLDER AREA
- SHIELD: MATTE TIN ON SOLDER AREA
- ELECTRICAL SPECIFICATION:
A. IMPEDANCE: 50 Ω
B. FREQUENCY RANGE: DC TO 6.0 GHz
C. STANDING WAVE RATIO: 1.4 (15.6 dB) MAX (DC TO 2.0 GHz)
1.5 (13.98 dB) MAX (2.0 GHz TO 3.0 GHz)
1.6 (12.74 dB) MAX (3.0 GHz TO 6.0 GHz)
D. INSERTION LOSS: 0.3 dB MAX (DC TO 3 GHz)
0.45 dB MAX (3 GHz TO 6 GHz)
E. CENTER CONTACT RESISTANCE: 24mΩ MAX
F. OUTER CONTACT RESISTANCE: 5mΩ MAX
G. WORKING VOLTAGE: 60V MAX
H. POWER CURRENT 1A MAX
I. DIELECTRIC WITHSTANDING VOLTAGE: 800V MIN.
J. INSULATION RESISTANCE: 100MΩ MIN.
- MECHANICAL SPECIFICATION:
- DURABILITY: 25 CYCLES MIN.
- RETENTION FORCE LATCH: 110N MIN.
- ENGAGEMENT FORCE: 25N MAX
- FAKRA INTERFACE PER USCAR-18
- WORKING TEMPERATURE RANGE: -40 C TO +105 C
- RECOMMENDED PCB THICKNESS: 1.6mm.
SOLDERING PROCESS: LEAD-FREE REFLOW SOLDERING PROCESS, MAX SOLDERING TEMPERATURE: +260 C FOR 10 SEC.

PN	35619953	35619954	35619955	35619956	35619957	35619958	35619959	35619960	35619961	35619963	35619964	35619965	35619966	35619967
PLUG														
CODE	A	B	C	D	E	F	G	H	I	K	L	M	N	Z
COLOR	BLACK	WHITE	BLUE	CLARET VOILET	GREEN	BROWN	GRAY	HEATHER VOILET	BEIGE	CURRY	CARMINE RED	PASRAL ORANGE	PASTAL GREEN	WATER BLUE
RAL NO.	9005	9001	5005	4004	6002	8011	7031	4003	1001	1027	3002	2003	6019	5021

APTIV
CONNECTION SYSTEMS
Draught, India
COPYRIGHT 2021 APTIV. ALL RIGHTS RESERVED.
THIS DRAWING IS THE PROPERTY OF APTIV AND CONTAINS APTIV CONFIDENTIAL INFORMATION. THE REPRODUCTION, DISTRIBUTION AND UTILIZATION OF THIS DOCUMENT OR ITS RELATED CAD DATA, AS WELL AS COMMUNICATION OF ANY CONTENT TO OTHERS, WITHOUT EXPRESS AUTHORIZATION, IS PROHIBITED.

DATE: 10NO21
REV: 01
APP: -
CHG: -
ZONE: -

THIS DOCUMENT IS IN ACCORDANCE WITH ASME Y14.5M-1994 AS MODIFIED BY THE 2018 GLOBAL DIMENSIONING AND TOLERANCING ADDENDUM-2018. SEPARATE PATTERNING OF FEATURES MAY BE AWARDED SEPARATELY REGARDLESS OF DATUM REFERENCES.

ALL DIMENSIONS ARE IN MILLIMETERS

THIRD ANGLE PROJECTION
DO NOT SCALE
USE MATH DATA

UNLESS OTHERWISE SPECIFIED
DIMENSIONS ENCLOSED IN () INDICATE REFERENCE DIMENSING AND NO TOLERANCE LIMITS ARE ESTABLISHED

PROCESS SENSITIVE DIMENSION
DIMENSIONS ENCLOSED IN [] INDICATE REFERENCE DIMENSING AND NO TOLERANCE LIMITS ARE ESTABLISHED

CHART E1
FROM TO TOLERANCE UNLESS OTHERWISE SPECIFIED
0 > 0 > 20 > 30 > 70 > 100 > 150 > 200 > 250 > 300 > 400
±0.15 | ±0.2 | ±0.3 | ±0.4 | ±0.5 | ±0.6 | ±0.8 | ±1 | ±1.2
ANGULAR TOLERANCE: ±2°

DR	DATE
S.MANOJHARAN	10NO21
GARY GUAN	10NO21
HUIJIN WANG	10NO21

DRAWING NAME: TAXI ASM CONN 2 M FAKRA

DRAWING NUMBER: 35619982

SIZE: A0
SCALE: 10:1
FRAME NO: 1 OF 1
SHEET NO: 1 OF 1
REV: 02